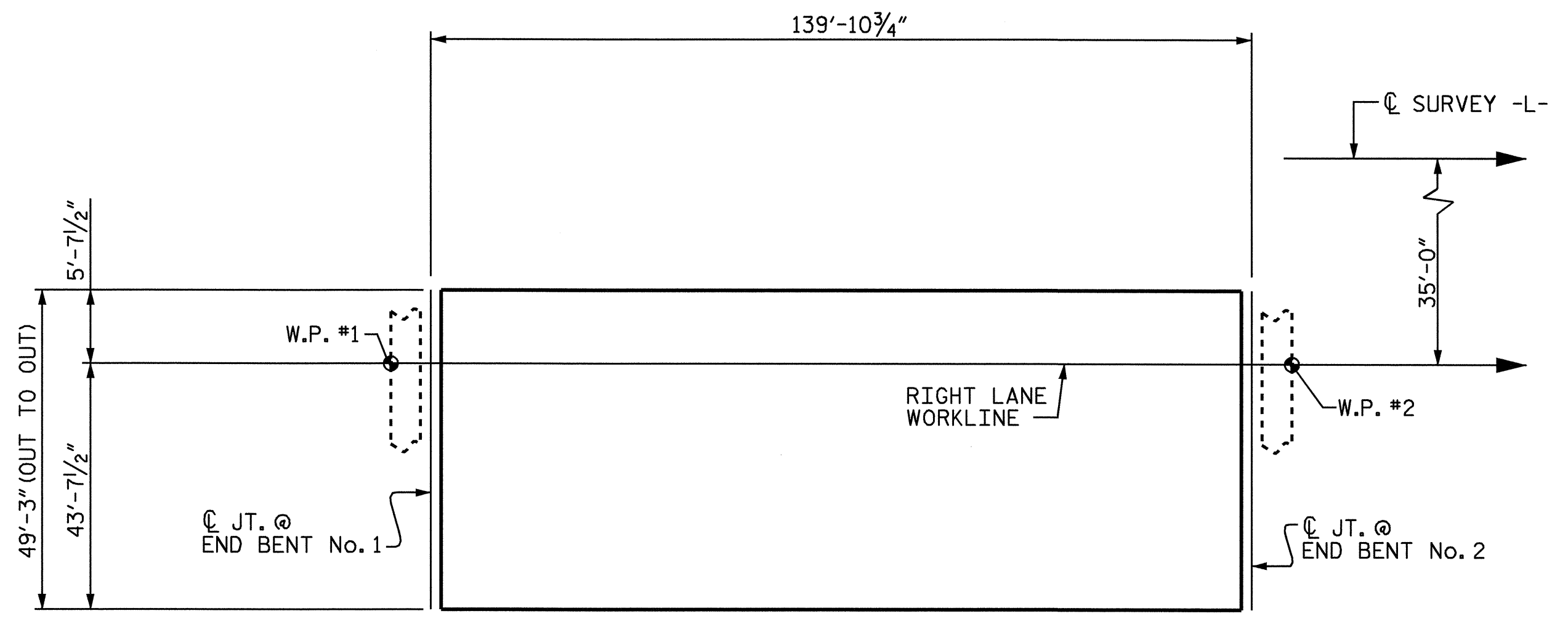
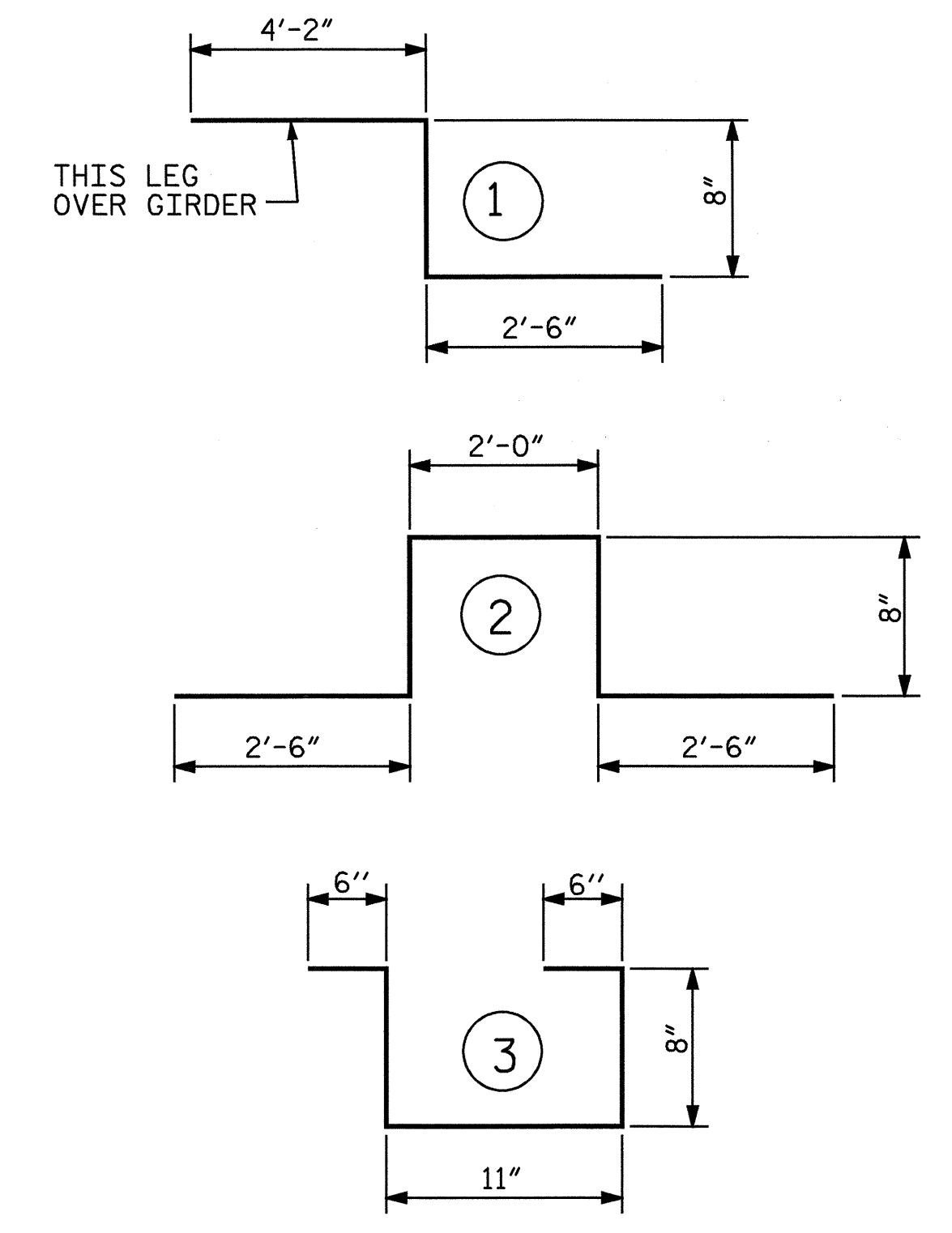


BILL OF MATERIAL

SPAN A					
BAR	NO.	SIZE	TYPE	LENGTH	WEIGHT
*A1	240	#5	STR	48'-11"	12245
A2	240	#5	STR	48'-11"	12245
*B1	170	#4	STR	29'- 6"	3350
B2	159	#5	STR	48'- 0"	7960
*G1	2	#5	STR	48'-11"	102
*K1	8	#5	1	7'- 4"	61
*K2	16	#5	2	8'-4"	139
*K3	20	#5	STR	6'- 8"	139
*S1	70	#4	3	3'- 3"	152
REINFORCING STEEL					= 20205 LBS
EPOXY COATED REINF. STEEL					= 16188 LBS

BAR TYPES



LAYOUT FOR COMPUTING AREA
OF REINFORCED CONCRETE DECK SLAB
(SQ. FT. = 6,890)

SUPERSTRUCTURE REINFORCING STEEL LENGTHS ARE BASED ON THE FOLLOWING MINIMUM SPLICE LENGTHS

BAR SIZE	SUPERSTRUCTURE EXCEPT APPROACH SLABS, PARAPET, AND BARRIER RAIL		APPROACH SLABS		PARAPET AND BARRIER RAIL
	EPOXY COATED	UNCOATED	EPOXY COATED	UNCOATED	
#4	2'-0"	1'-9"	2'-0"	1'-9"	2'-9"
#5	2'-6"	2'-2"	2'-6"	2'-2"	3'-5"
#6	3'-0"	2'-7"	3'-10"	2'-7"	4'-4"
#7	5'-3"	3'-6"	—	—	—
#8	6'-10"	4'-7"	—	—	—

GROOVING BRIDGE FLOORS

BRIDGE DECK	5,994 SQ.FT.
APPROACH SLABS	2,137 SQ.FT.
TOTAL	8,131 SQ.FT.

ALL BAR DIMENSIONS ARE OUT TO OUT

— SUPERSTRUCTURE BILL OF MATERIAL —

	CLASS AA CONCRETE (CU.YDS.)	REINFORCING STEEL (LBS.)	EPOXY COATED REINFORCING STEEL (LBS.)
SPAN A	209.7	20,205	16,188
TOTALS**	209.7	20,205	16,188

** QUANTITIES FOR BARRIER RAIL ARE NOT INCLUDED

PROJECT NO. R-2417BB
LEE COUNTY
STATION: 565+49.40 -L-



STATE OF NORTH CAROLINA
DEPARTMENT OF TRANSPORTATION
RALEIGH
STANDARD
SUPERSTRUCTURE
BILL OF MATERIAL
RIGHT LANE

OCTOBER 1987

REVISIONS						SHEET NO. S-68
NO.	BY:	DATE:	NO.	BY:	DATE:	
1			3			TOTAL SHEETS 78
2			4			

ASSEMBLED BY : A.R.CHESSON	DATE: 4-04
CHECKED BY : B.N.GRADY	DATE: 4-04
DRAWN BY : JMB 5/87	REV. 6/1/94 EEM/GRP
CHECKED BY : SJD 9/87	