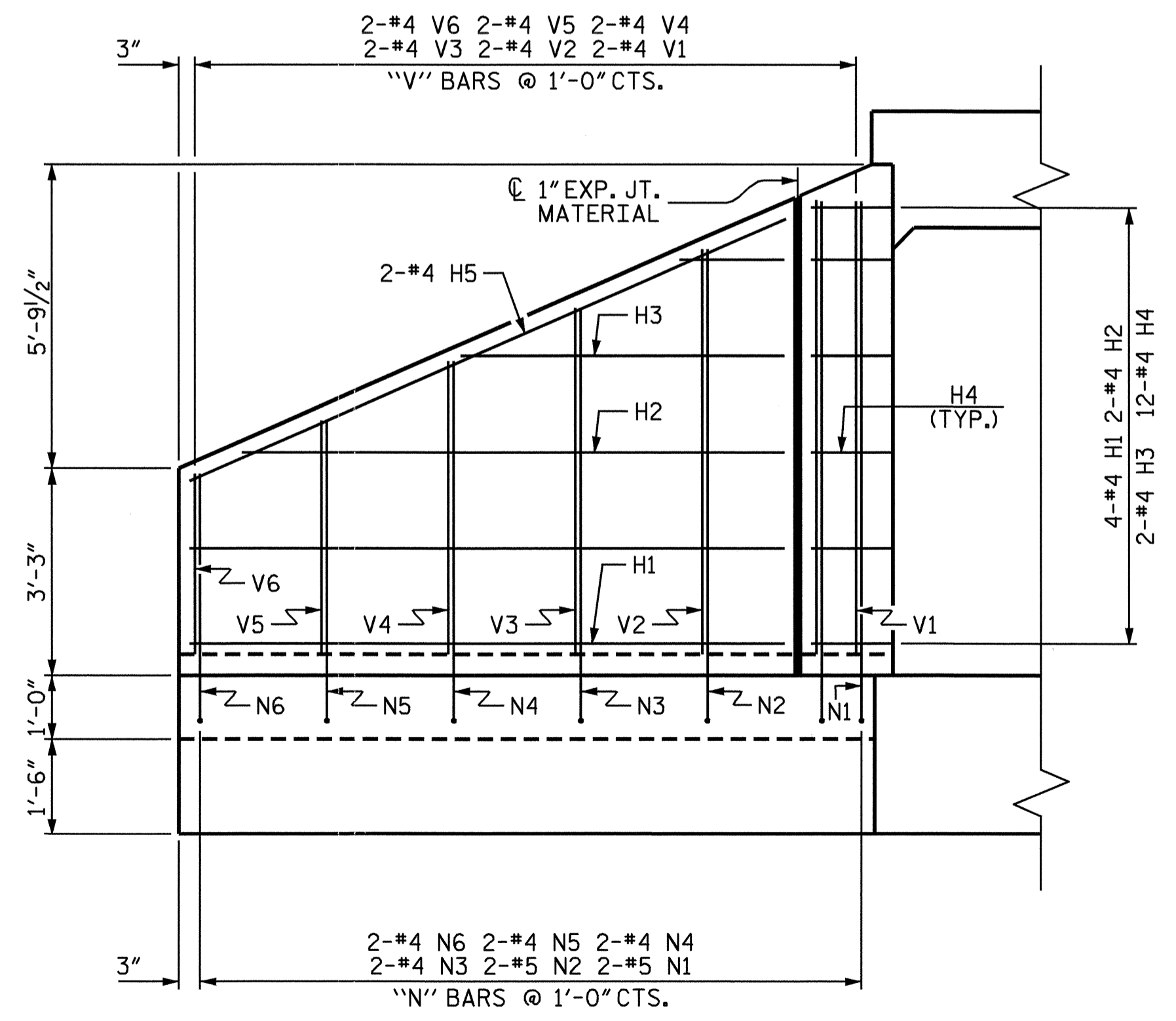
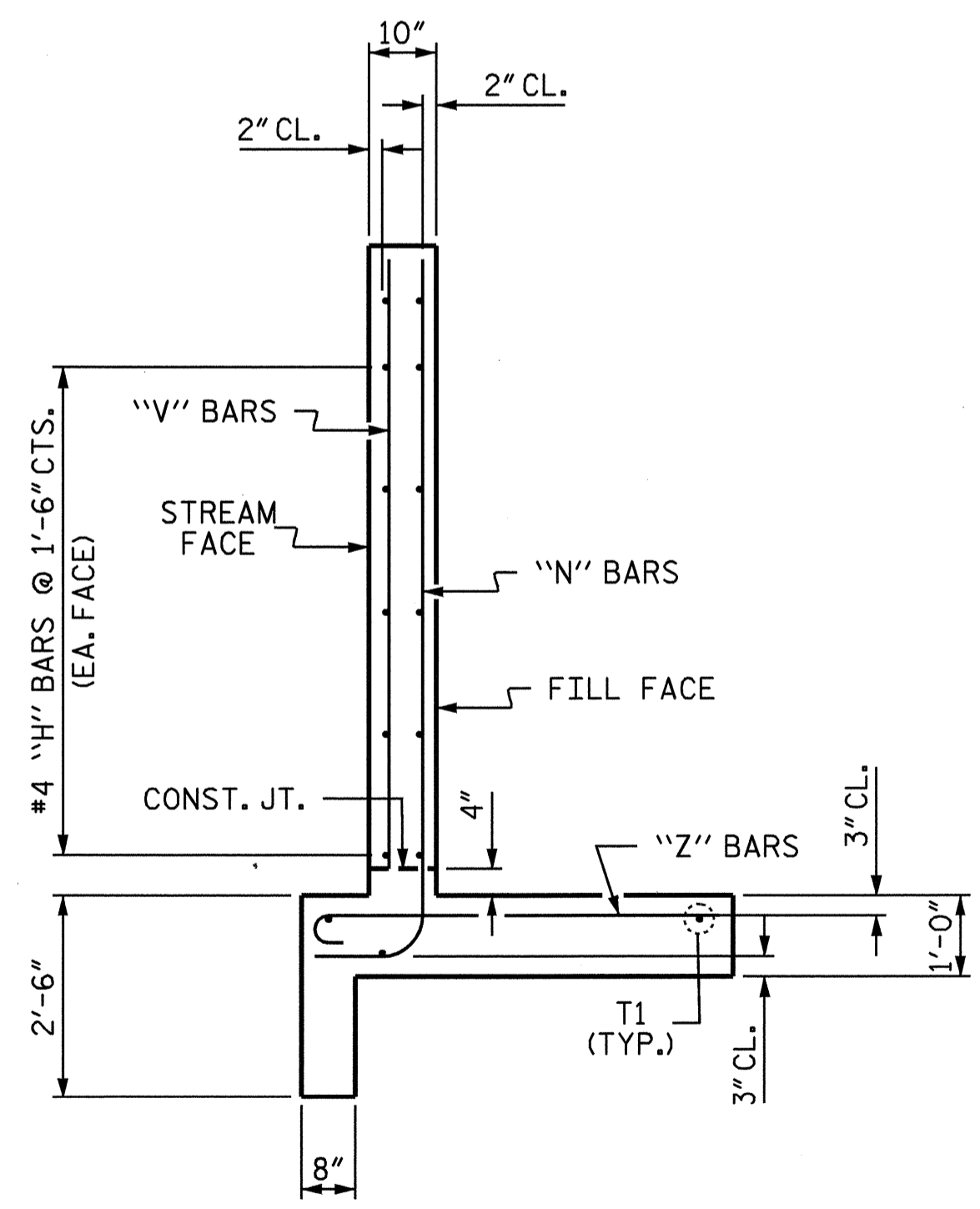


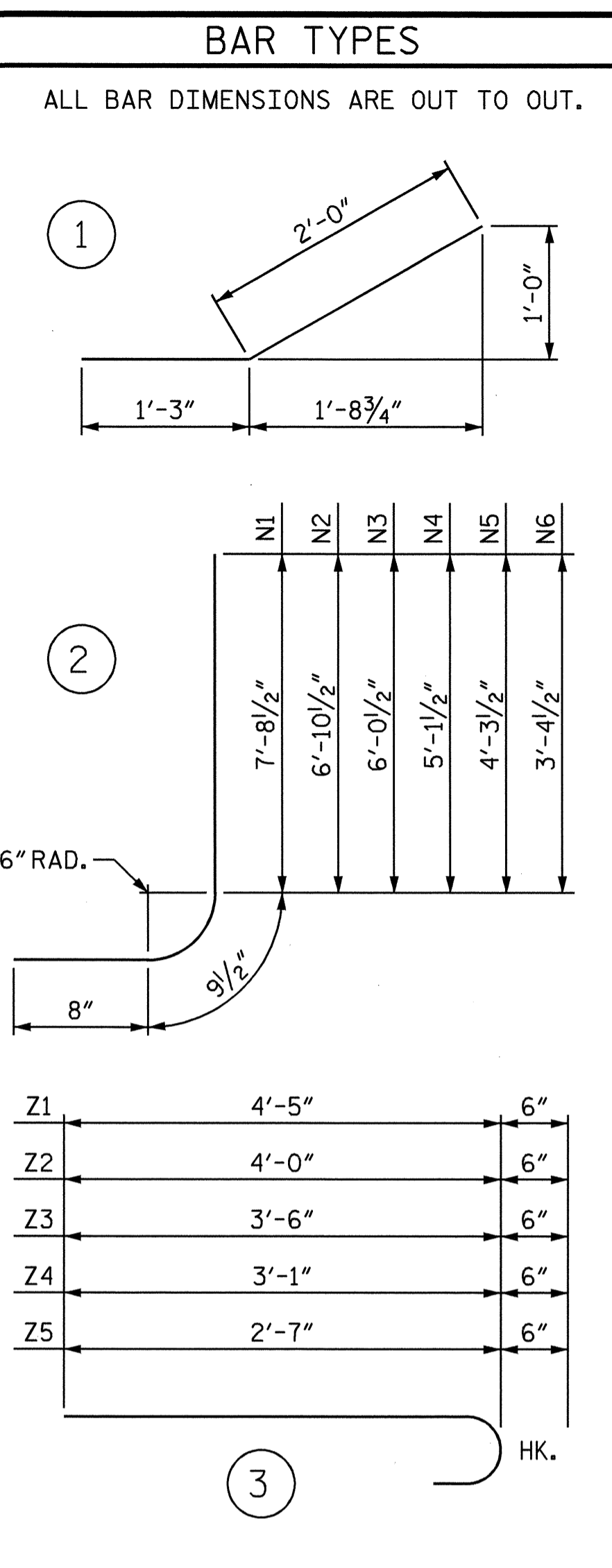
PLAN-INLET WINGS



ELEVATION-INLET WINGS



TYPICAL WING SECTION



BILL OF MATERIAL					
INLET WINGS					
BAR	NO.	SIZE	TYPE	LENGTH	WEIGHT
H1	8	#4	STR	9'-4"	50
H2	4	#4	STR	8'-6"	23
H3	4	#4	STR	5'-1"	14
H4	24	#4	1	3'-3"	52
H5	4	#4	STR	10'-3"	27
N1	4	#5	2	9'-2"	38
N2	4	#5	2	8'-4"	35
N3	4	#4	2	7'-6"	20
N4	4	#4	2	6'-7"	18
N5	4	#4	2	5'-9"	15
N6	4	#4	2	4'-10"	13
S1	6	#6	STR	6'-0"	54
T1	6	#5	STR	11'-3"	70
V1	4	#4	STR	7'-1"	19
V2	4	#4	STR	6'-4"	17
V3	4	#4	STR	5'-5"	14
V4	4	#4	STR	4'-7"	12
V5	4	#4	STR	3'-8"	10
V6	4	#4	STR	2'-10"	8
Z1	8	#4	3	4'-11"	26
Z2	4	#4	3	4'-6"	12
Z3	4	#4	3	4'-0"	11
Z4	4	#4	3	3'-7"	10
Z5	4	#4	3	3'-1"	8

TOTAL REINFORCING STEEL FOR 2 INLET WINGS 576 LBS

CLASS A CONCRETE
 2 INLET WINGS 8.6 CY
 1 HEADWALL 0.8 CY
 1 END CURTAIN WALL 0.9 CY
 TOTAL 10.3 CY

ASSEMBLED BY : D.A.STARK DATE : 4/03
 CHECKED BY : P.SPROUSE DATE : 4/03
 DRAWN BY : CCJ 10/99
 CHECKED BY : RWW 03/00

PROJECT NO. R-2417BB
 LEE COUNTY
 STATION: 508+40.00 -L-
 SHEET 5 OF 6

STATE OF NORTH CAROLINA
 DEPARTMENT OF TRANSPORTATION
 RALEIGH
 STANDARD WINGS
 FOR
 CONCRETE BOX CULVERT
 H = 7'-0" SLOPE = 2:1
 90° SKEW

REVISIONS				SHEET NO.	
NO.	BY:	DATE:	NO.	BY:	DATE:
1			3		
2			4		

TOTAL SHEETS 11

