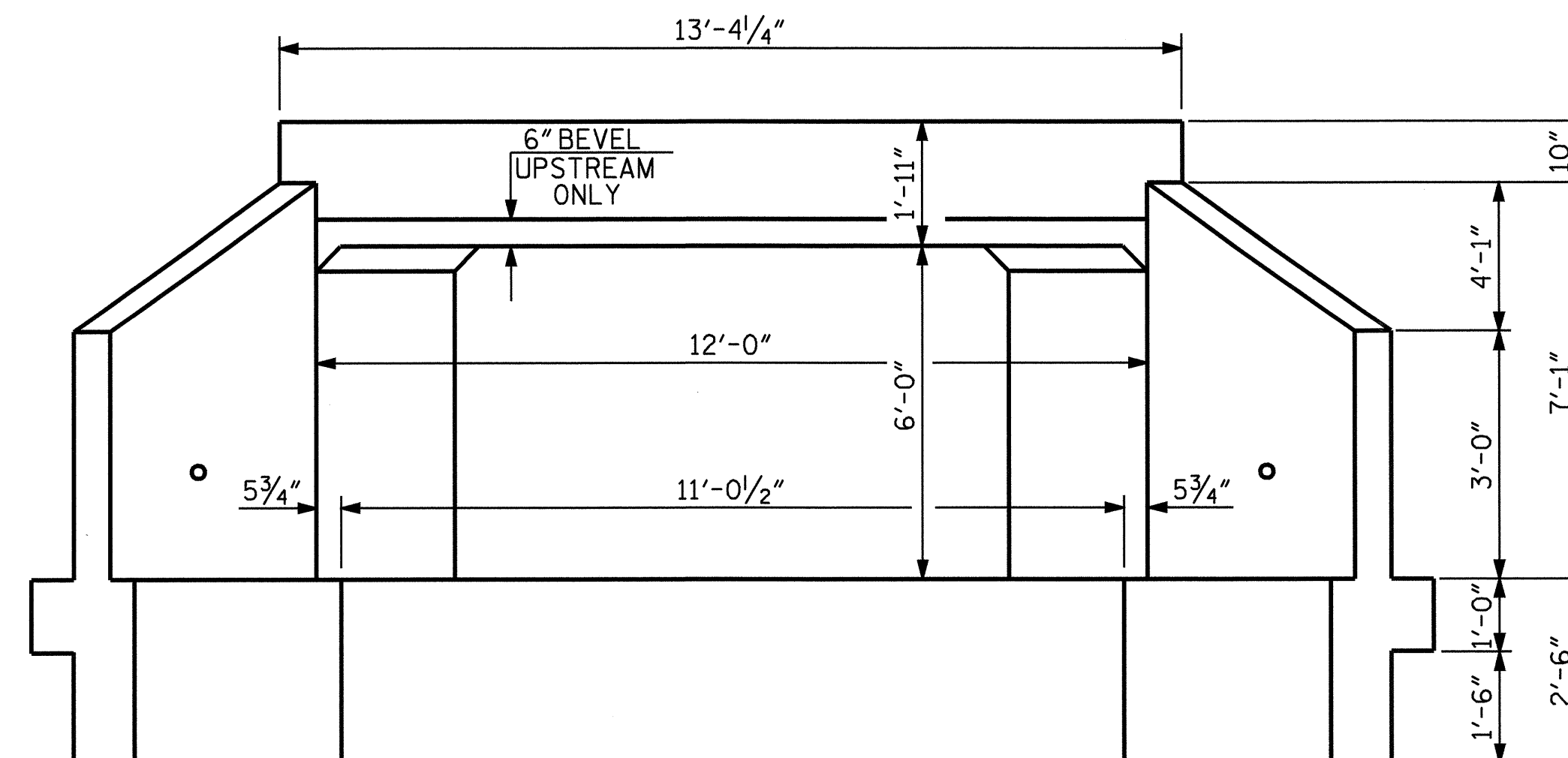
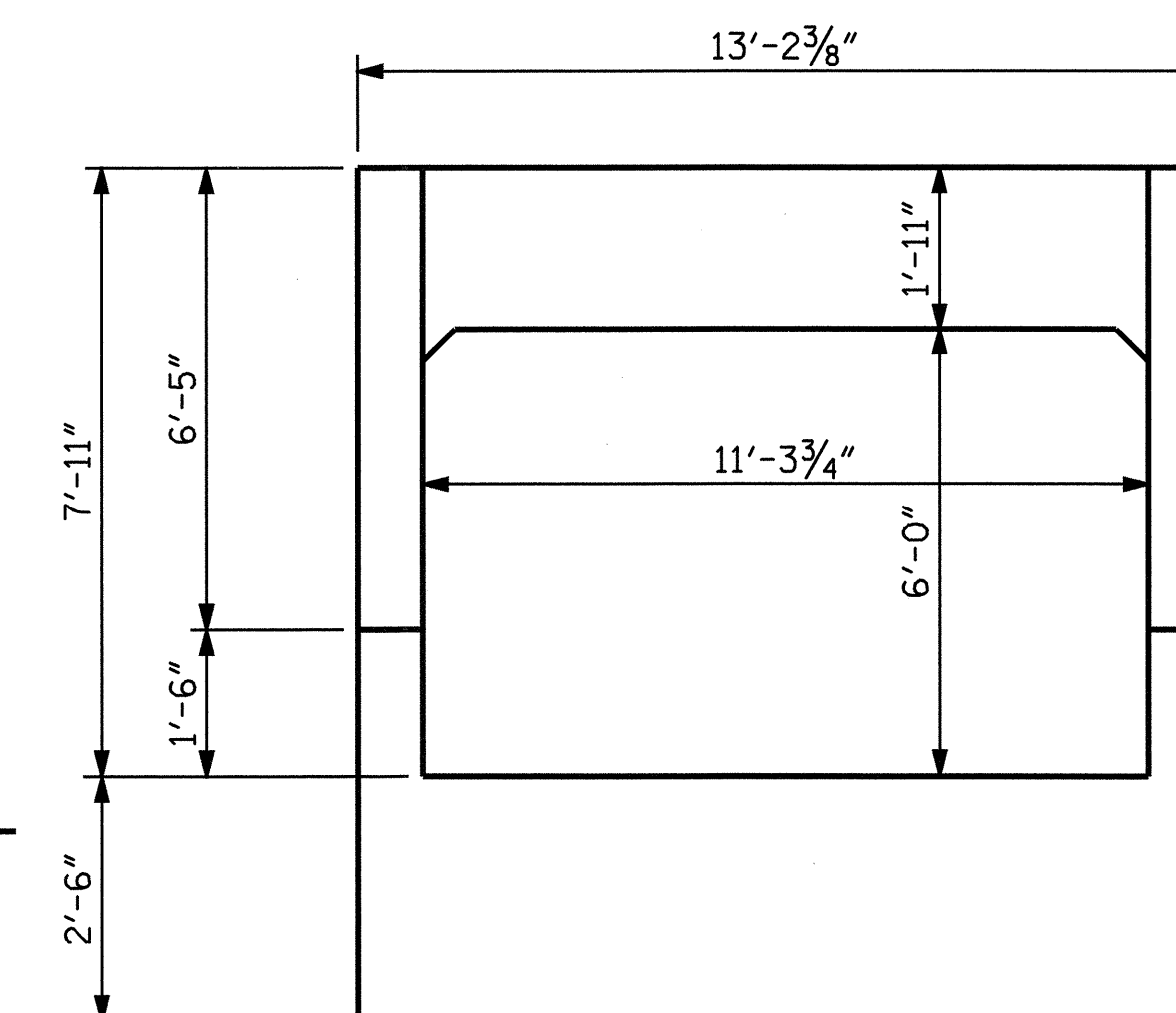


**CULVERT SECTION NORMAL TO ROADWAY**



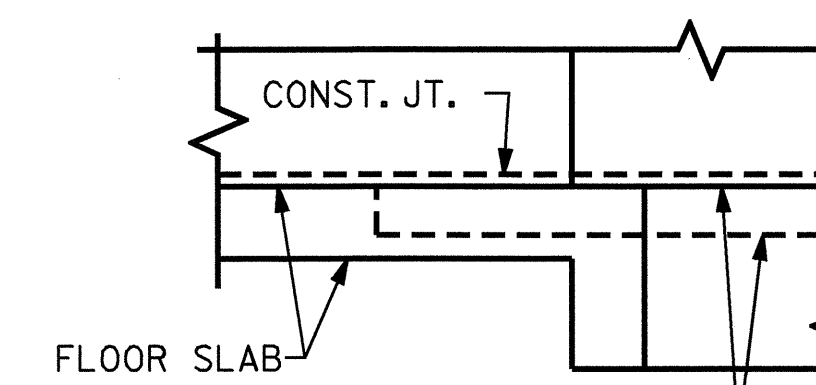
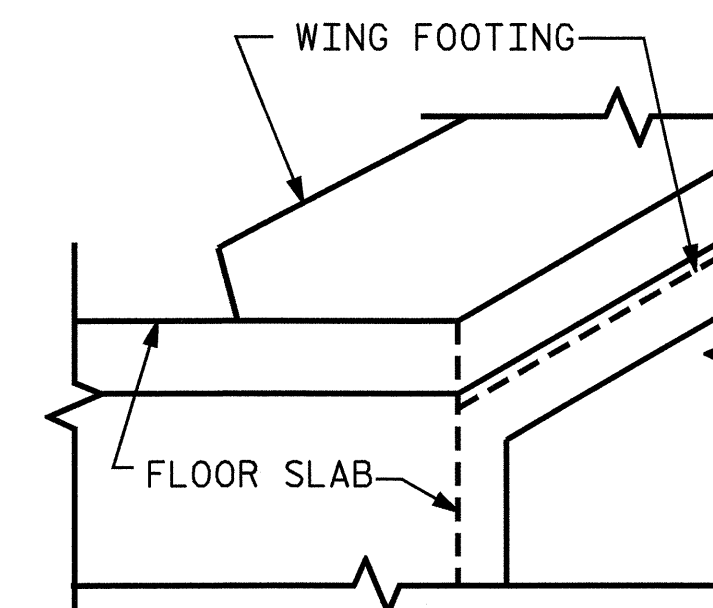
**INLET END ELEVATION**

(NORMAL TO SKEW)



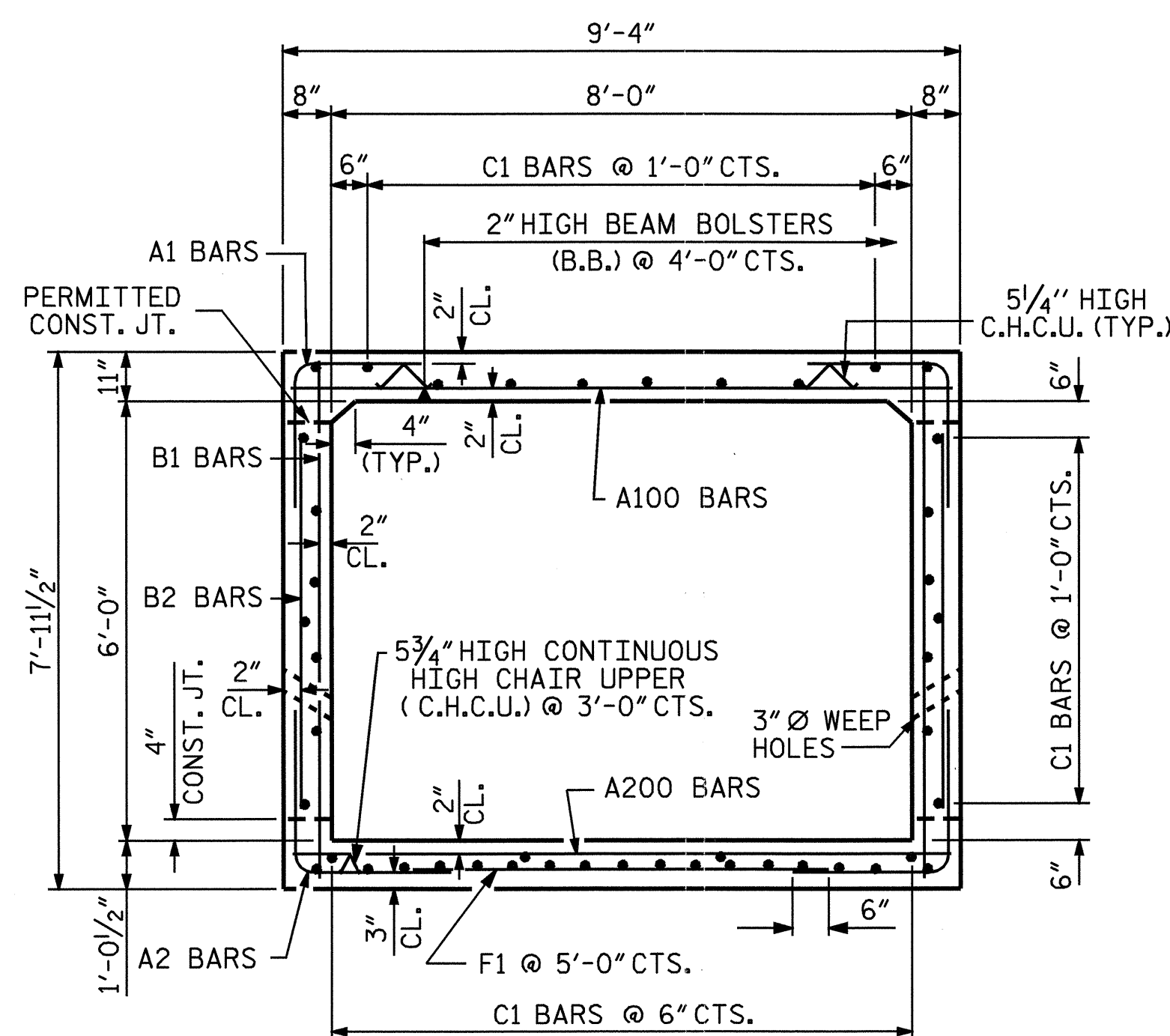
**OUTLET END ELEVATION**

(NORMAL TO SKEW)



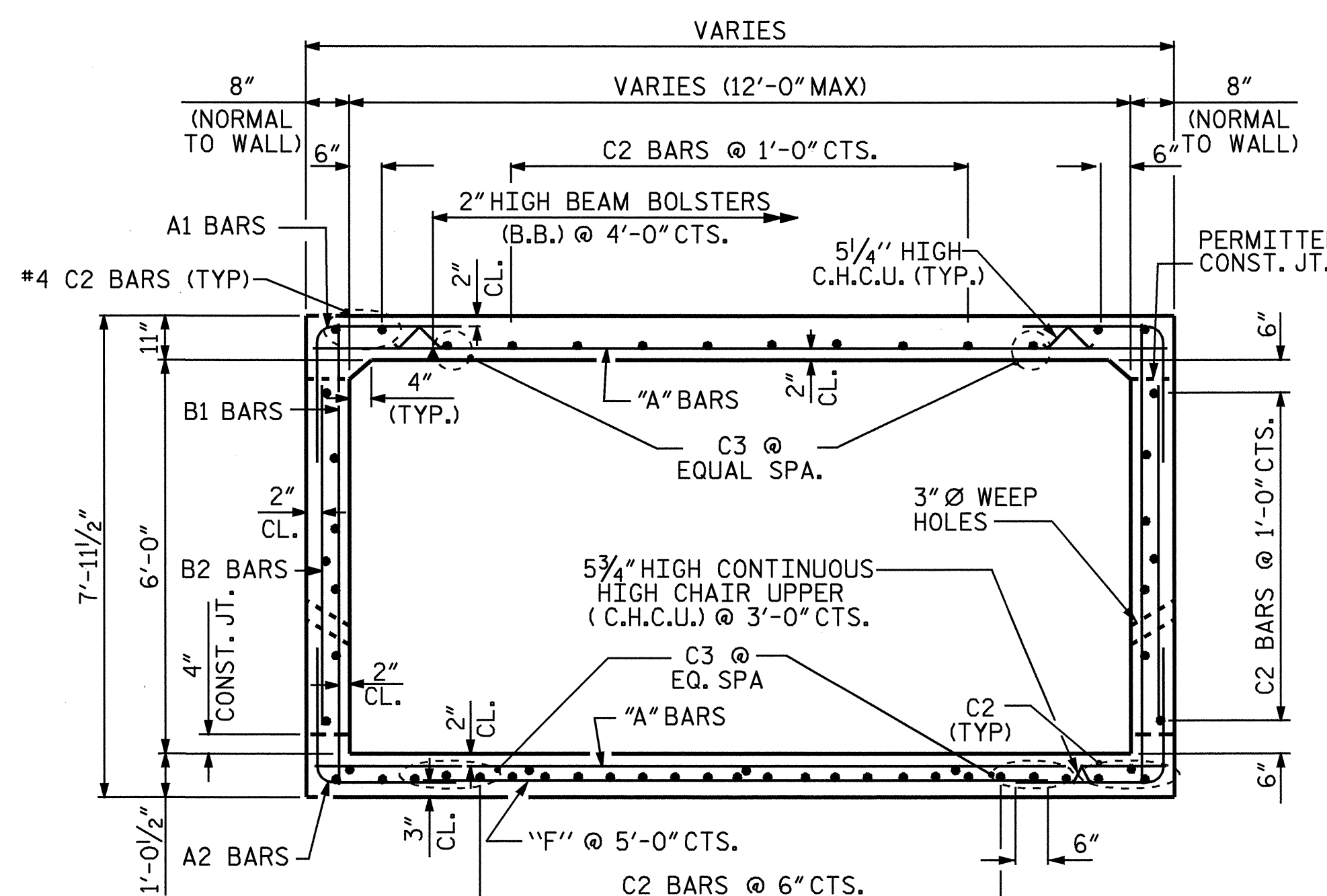
**DETAIL**

**CONNECTION OF WING FOOTING AND FLOOR SLAB WHEN SLAB IS THICKER THAN FOOTING**



**RIGHT ANGLE SECTION OF BARREL**

THERE ARE 45 "C" BARS IN SECTION OF BARREL



**RIGHT ANGLE SECTION OF BARREL AT TAPERED INLET**

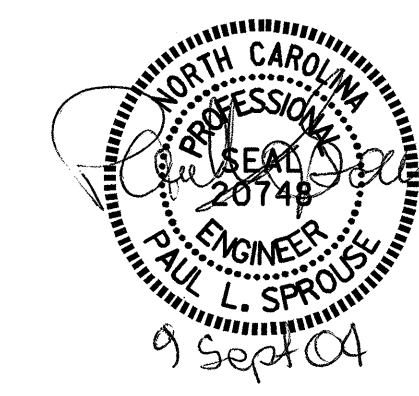
THERE ARE 58 "C" BARS IN SECTION OF BARREL

REVISED 8-28-92 BY E.L.R. CHECKED BY G.R.P.  
REVISED 8-22-89 BY A.R.B. CHECKED BY C.R.K.  
DRAWN 8-22-89

REVISED 11-19-99 BY M.M. CHECKED BY R.W.W.

ASSEMBLED BY: K.W. ALFORD DATE: 3/03  
CHECKED BY: P. SPROUSE DATE: 3/03  
DRAWN BY: R.W. WRIGHT DATE: AUG. 1989  
CHECKED BY: A.R. BISSETTE DATE: AUG. 1989

**SPECIAL**  
**STANDARD**



PROJECT NO. R-2417BB  
LEE COUNTY  
STATION: 532+67.00 -L-

SHEET 2 OF 5

STATE OF NORTH CAROLINA  
DEPARTMENT OF TRANSPORTATION  
RALEIGH  
BARREL STANDARD  
SINGLE 8 FT. X 6 FT.  
CONCRETE BOX CULVERT  
46° SKEW

1972

REVISIONS				SHEET NO.
NO.	BY:	DATE:	NO.	DATE:
1			3	
2			4	

TOTAL SHEETS 11

STD. NO. CB41