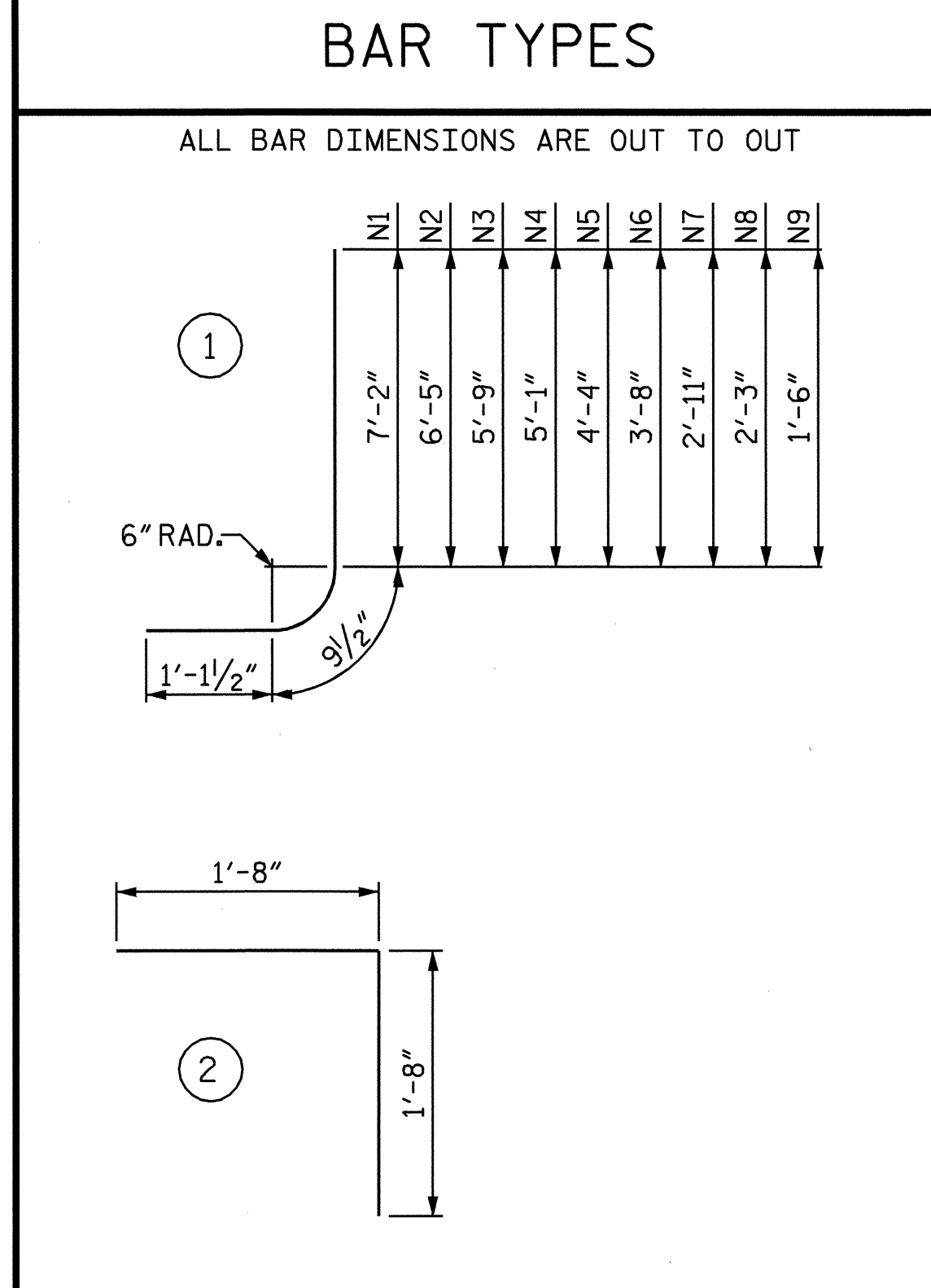
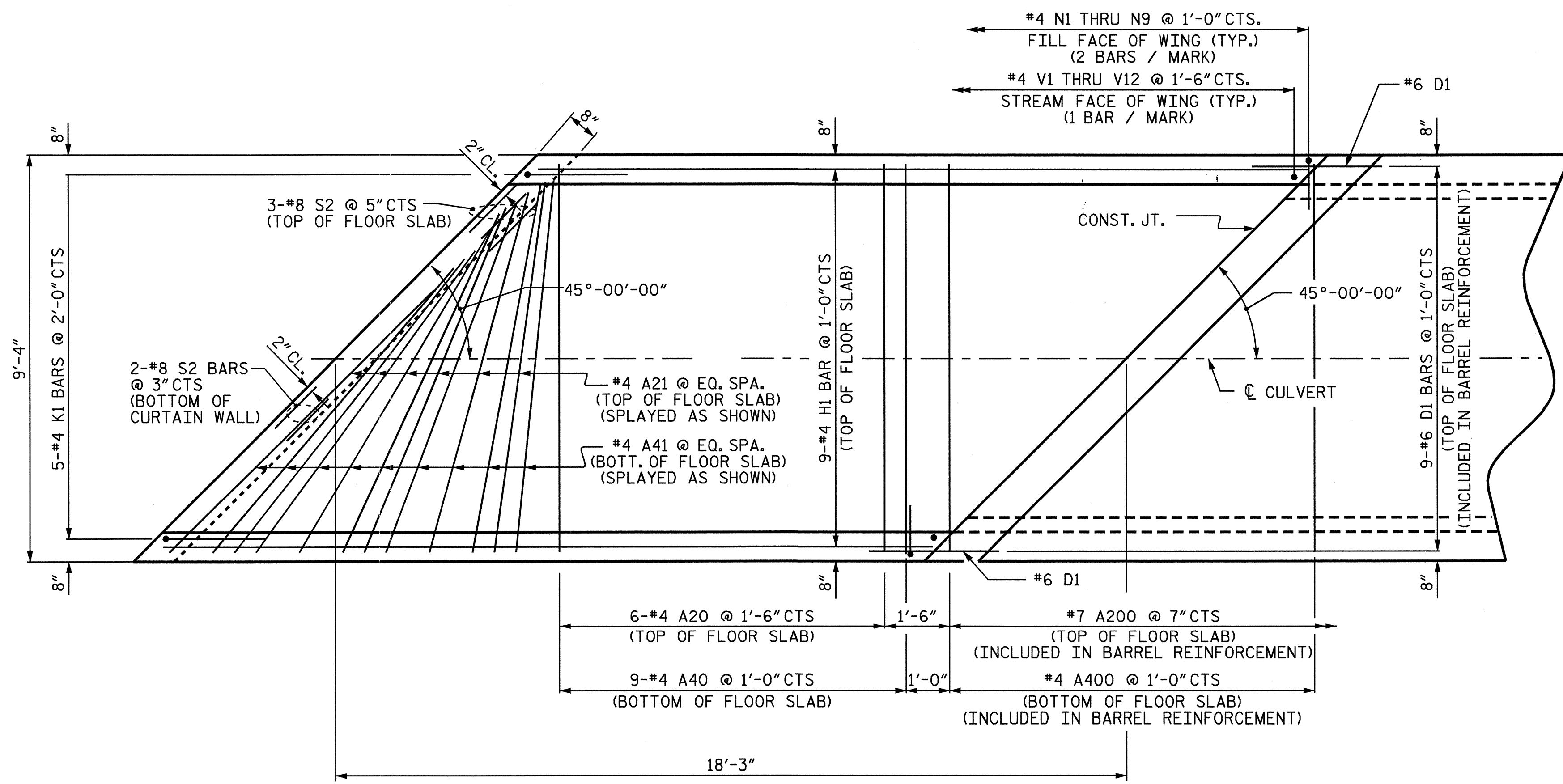


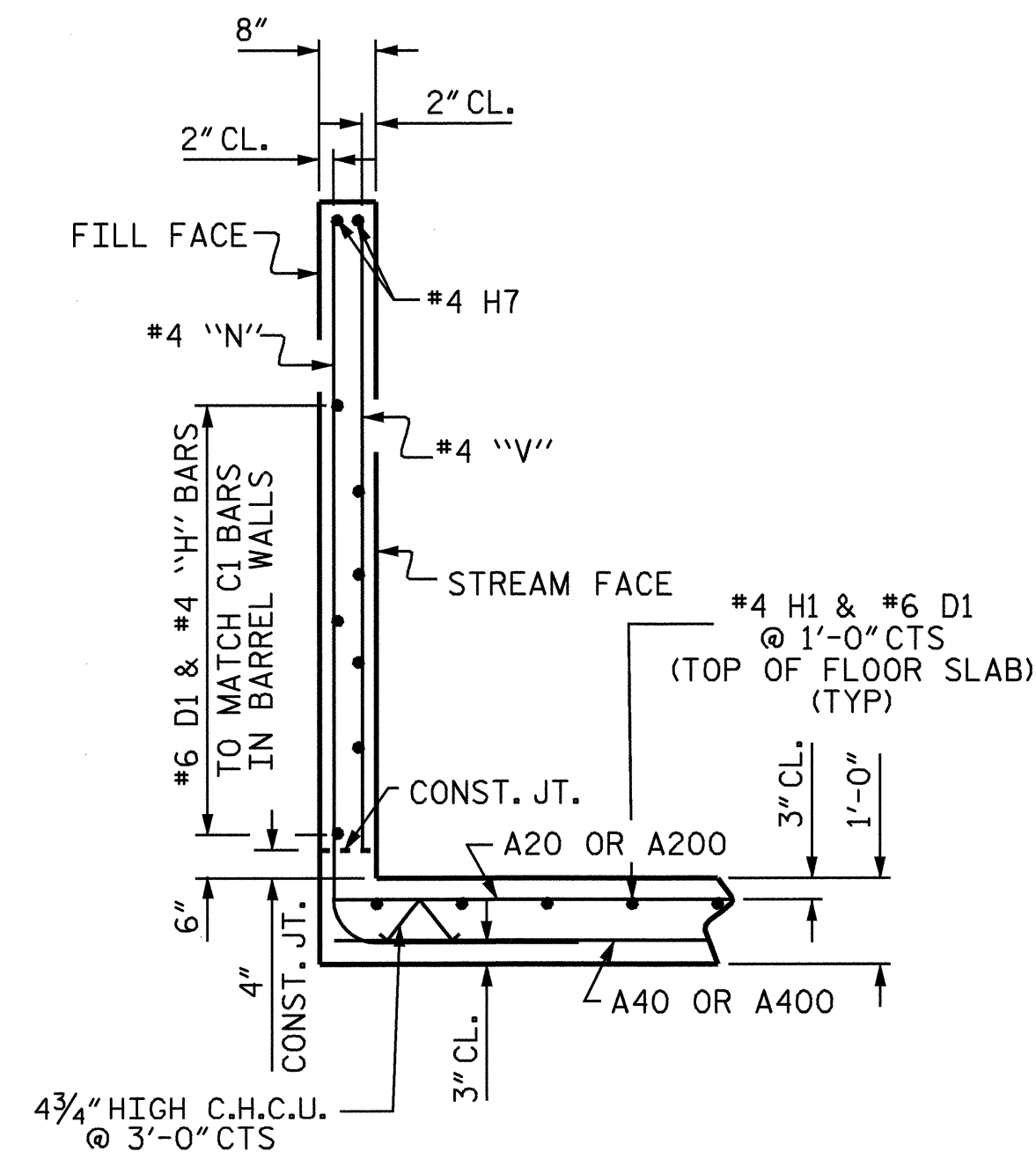
OUTLET WING SECTION NORMAL TO ROADWAY



BILL OF MATERIAL					
OUTLET WINGS					
BAR NO.	SIZE	TYPE	LENGTH	WEIGHT	
A20	6	4	STR	8'-11"	36
A21	6	4	STR	8'-6"	34
A40	9	4	STR	8'-11"	54
A41	9	4	STR	8'-6"	51
H1	13	4	STR	17'-11"	156
H2	2	4	STR	15'-0"	20
H3	2	4	STR	13'-7"	18
H4	2	4	STR	12'-2"	16
H5	2	4	STR	9'-4"	12
H6	2	4	STR	6'-6"	9
H7	4	4	STR	18'-11"	51
K1	5	4	2	3'-4"	11
N1	4	4	1	9'-1"	24
N2	4	4	1	8'-4"	22
N3	4	4	1	7'-8"	20
N4	4	4	1	7'-0"	19
N5	4	4	1	6'-3"	17
N6	4	4	1	5'-7"	15
N7	4	4	1	4'-10"	13
N8	4	4	1	4'-2"	11
N9	4	4	1	3'-5"	9
S2	5	8	STR	12'-8"	169
V1	2	4	STR	7'-3"	10
V2	2	4	STR	6'-9"	9
V3	2	4	STR	6'-3"	8
V4	2	4	STR	5'-8"	8
V5	2	4	STR	5'-2"	7
V6	2	4	STR	4'-8"	6
V7	2	4	STR	4'-1"	5
V8	2	4	STR	3'-7"	5
V9	2	4	STR	3'-1"	4
V10	2	4	STR	2'-6"	3
V11	2	4	STR	2'-0"	3
V12	2	4	STR	1'-6"	2
REINFORCING STEEL FOR 2 OUTLET WINGS				857	LBS.



PLAN - OUTLET WINGS



TYPICAL WING SECTION

CLASS A CONCRETE		
2 OUTLET WINGS	3.9	C.Y.
1 HEADWALL	0.6	C.Y.
1 END CURTAIN WALL & WING FLOOR SLAB	7.1	C.Y.
TOTAL	11.6	C.Y.

PROJECT NO. R-2417BB
 COUNTY LEE
 STATION: 532+67.00 -L-

SHEET 5 OF 5

STATE OF NORTH CAROLINA DEPARTMENT OF TRANSPORTATION RALEIGH					
SINGLE 8 FT. X 6 FT. CONCRETE BOX CULVERT 46° SKEW					
REVISIONS					
NO.	BY:	DATE:	NO.	BY:	DATE:
1			3		
2			4		

SHEET NO. C-11
TOTAL SHEETS 11



DRAWN BY: K.W. ALFORD DATE: 3/03
 CHECKED BY: P. SPROUSE DATE: 3/03