



NAD 83

PIS STA 59+74.38 PIS STA 53+45.20 PIS STA 552+197.2
 OS = 1.8' 4.5" Δ = 7.58' 13.5" (LT) OS = 1.8' 4.5"
 LS = 330.00' D = 7.4' 59.8" LT = 330.00'
 LT = 220.04' L = 3.05' 3.5" LT = 220.04'
 T = 165.02' R = 2550.00' ST = 100.3'
 e = 0.07'

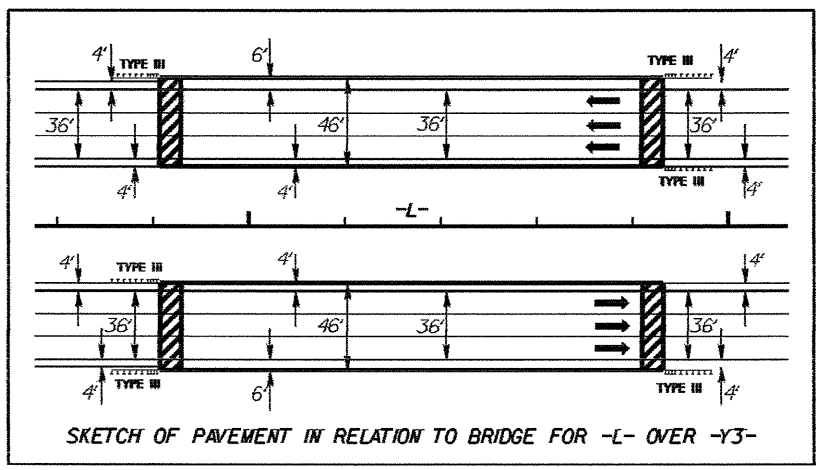
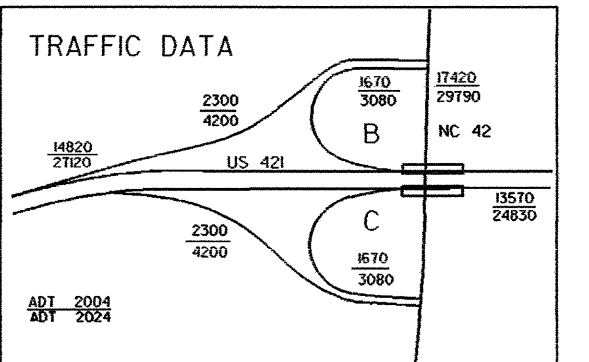
PIS STA 12+33.34 PIS STA 19+49.67 PIS STA 26+63.56
 OS = 1.8' 4.5" Δ = 7.58' 13.5" (LT) OS = 1.8' 4.5"
 LS = 350.00' D = 7.4' 59.8" LT = 350.00'
 LT = 233.34' L = 3.05' 3.5" LT = 233.34'
 T = 165.02' R = 2550.00' ST = 100.3'
 e = 0.07'

PIS STA 3475.43 PIS STA 8+76.5 PIS STA 10+166.4
 OS = 44.04' 25.2" Δ = 107.41' 41" (LT) OS = 20' 56" 0.6"
 LS = 400.00' D = 22.02' 12.6" LT = 400.00'
 LT = 275.43' L = 5.02' 7.2" LT = 127.56'
 T = 47.76' R = 2600.00' ST = 64.05'
 e = 0.08'

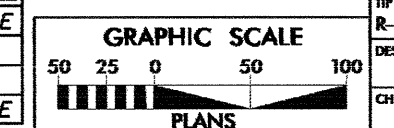
PIS STA 3475.43 PIS STA 9+47.76 PIS STA 10+166.4
 OS = 44.04' 25.2" Δ = 107.41' 41" (LT) OS = 20' 56" 0.6"
 LS = 400.00' D = 22.02' 12.6" LT = 400.00'
 LT = 275.43' L = 5.02' 7.2" LT = 127.56'
 T = 47.76' R = 2600.00' ST = 64.05'
 e = 0.08'

PIS STA 2+33.39 PIS STA 10+28.20 PIS STA 11+90.9 PIS STA 13+51.84 PIS STA 18+58.94 PIS STA 20+51.23
 OS = 3.7' 0.47" Δ = 4.59' 5.87" (RT) OS = 9.30' 5.37" (LT) OS = 2.52' 5.75" Δ = 25.24' 0.57" (RT)
 LS = 400.00' L = 230.00' D = 4.59' 5.87" LT = 200.00' LS = 200.00' OS = 19.000' LT = 2.52' 5.75"
 LT = 266.73' L = 80.30' LT = 133.39' LT = 133.39' LT = 133.39' LT = 133.39' LT = 133.39' LT = 133.39'
 ST = 133.39' ST = 66.72' ST = 66.72' ST = 66.72' ST = 66.72' ST = 66.72' ST = 66.72'
 e = 0.07' e = 0.07' e = 0.07' e = 0.07' e = 0.07' e = 0.07' e = 0.07'

PIS STA 3+33.62 PIS STA 7+66.8 PIS STA 14+53.57 PIS STA 16+20.40 PIS STA 17+89.17
 Δ = 31.50' 5.87" (RT) OS = 4.59' 5.87" (LT) OS = 9.30' 5.37" Δ = 20.14' 5.04" (LT)
 LS = 350.00' L = 350.00' D = 20.00' LS = 200.00' LT = 200.00' OS = 19.000' LT = 2.52' 5.75"
 LT = 233.62' L = 6.36' 8.8" LT = 133.39' LT = 133.39' LT = 133.39' LT = 133.39' LT = 133.39' LT = 133.39'
 ST = 163.93' R = 1460.00' ST = 66.72' ST = 66.72' ST = 66.72' ST = 66.72' ST = 66.72' ST = 66.72'
 e = 0.08' e = 0.08' e = 0.08' e = 0.08' e = 0.08' e = 0.08' e = 0.08'



SEE SHEETS 17 & 18 FOR "L" PROFILE
 SEE SHEET 19 & 20 FOR "RPS" PROFILE
 SEE SHEET 20 & 21 FOR "RPC" PROFILE
 SEE SHEET 21 FOR "LPB" PROFILE
 SEE SHEET 22 FOR "LPC" PROFILE
 SEE SHEET 23 & 24 FOR "Y3" PROFILE



PROJECT REFERENCE NO.	R-247BB
SHEET NO.	EC 9/CONSTR.8
ROADWAY DESIGN ENGINEER	
HYDRAULIC ENGINEER	

BL-271
 PNC 86+45.44
 STA. 568+65
 OFFSET = 28.80'

PIS STA 14+38.95
 OS = 1.8' 4.5" Δ = 7.58' 13.5" (LT) OS = 1.8' 4.5"
 LS = 330.00' D = 7.4' 59.8" LT = 330.00'
 LT = 220.04' L = 3.05' 3.5" LT = 220.04'
 T = 165.02' R = 2550.00' ST = 100.3'
 e = 0.07'

DATE	
CHECKED BY	
DESIGNED BY	
COUNTY	LEE
PROJECT NO.	R-247BB