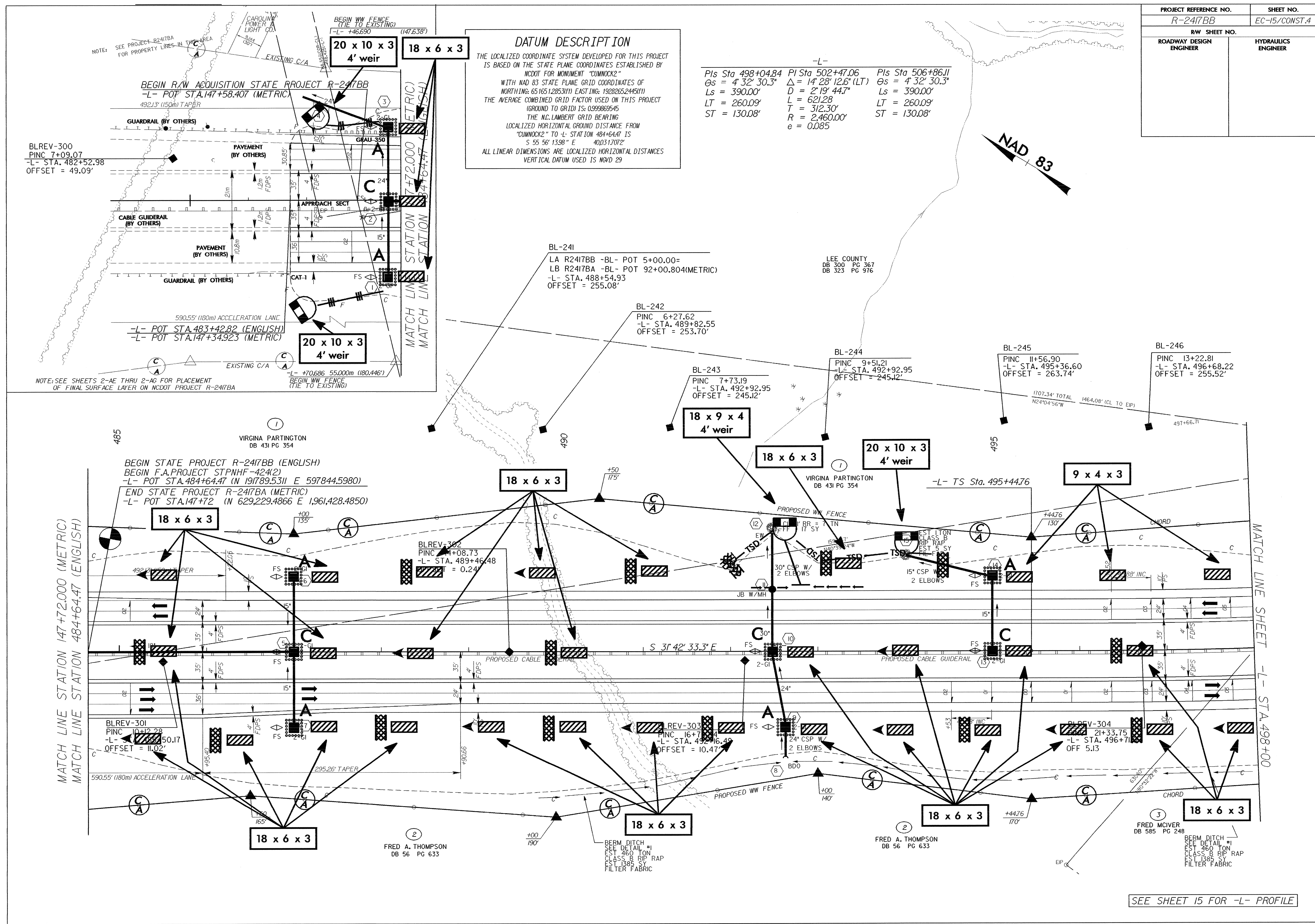


|                         |  |                     |  |
|-------------------------|--|---------------------|--|
| PROJECT REFERENCE NO.   |  | SHEET NO.           |  |
| R-2417BB                |  | EC-15/CONST.4       |  |
| RW SHEET NO.            |  |                     |  |
| ROADWAY DESIGN ENGINEER |  | HYDRAULICS ENGINEER |  |

**DATUM DESCRIPTION**  
 THE LOCALIZED COORDINATE SYSTEM DEVELOPED FOR THIS PROJECT IS BASED ON THE STATE PLANE COORDINATES ESTABLISHED BY NCDOT FOR MONUMENT "CUMNOCK2" WITH NAD 83 STATE PLANE GRID COORDINATES OF NORTHING: 651651285.31(F) EASTING: 19282652445(F) THE AVERAGE COMBINED GRID FACTOR USED ON THIS PROJECT (GROUND TO GRID) IS: 0.999869545 THE N.C. LAMBERT GRID BEARING LOCALIZED HORIZONTAL GROUND DISTANCE FROM "CUMNOCK2" TO -L- STATION 484+64.47 IS S 55° 56' 13.98" E 40031.7072' ALL LINEAR DIMENSIONS ARE LOCALIZED HORIZONTAL DISTANCES VERTICAL DATUM USED IS NGVD 29

-L-  
 PLS Sta 498+04.84 PI Sta 502+47.06 PLS Sta 506+86.11  
 $\Theta_s = 4' 32' 30.3"$   $\Delta = 14' 28' 12.6" (LT)$   $\Theta_s = 4' 32' 30.3"$   
 $L_s = 390.00'$   $D = 2' 19' 44.7"$   $L_s = 390.00'$   
 $LT = 260.09'$   $L = 621.28'$   $LT = 260.09'$   
 $ST = 130.08'$   $T = 312.30'$   $ST = 130.08'$   
 $R = 2,460.00'$   $e = 0.085$



BLREV-300  
 PINC 7+09.07  
 -L- STA. 482+52.98  
 OFFSET = 49.09'

BEGIN R/W ACQUISITION STATE PROJECT R-2417BB  
 -L- POT STA. 147+58.407 (METRIC)  
 492.13' (150m) TAPER

590.55' (180m) ACCELERATION LANE  
 -L- POT STA. 483+42.82 (ENGLISH)  
 -L- POT STA. 147+34.923 (METRIC)

NOTE: SEE SHEETS 2-AE THRU 2-AG FOR PLACEMENT OF FINAL SURFACE LAYER ON NCDOT PROJECT R-2417BA

MATCH LINE STATION 147+72.000 (METRIC)  
 MATCH LINE STATION 484+64.47 (ENGLISH)

MATCH LINE SHEET -L- STA. 498+00

SEE SHEET 15 FOR -L- PROFILE