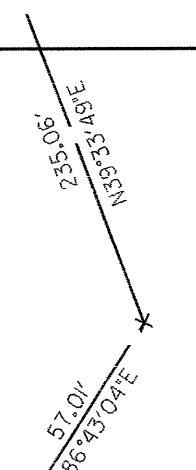
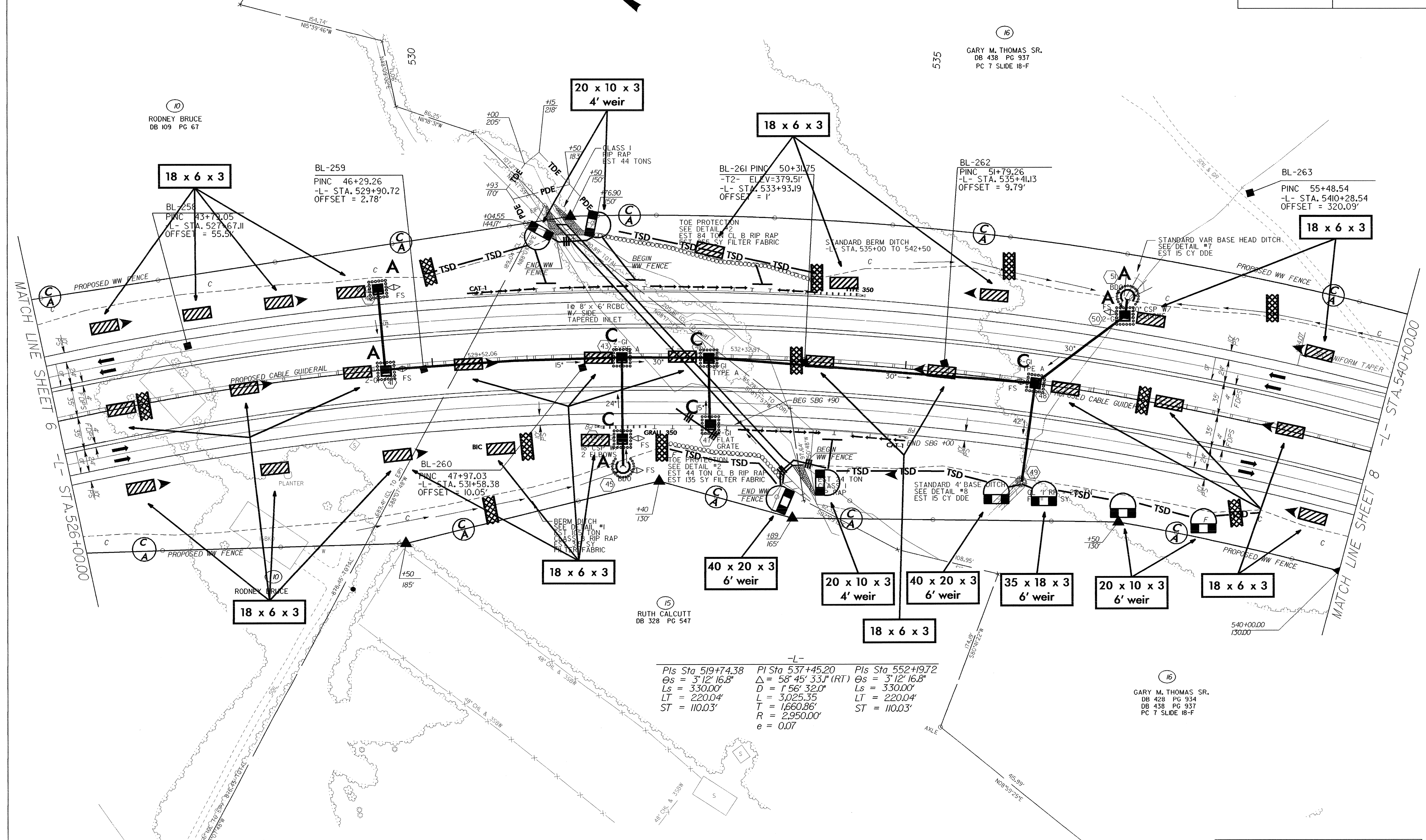
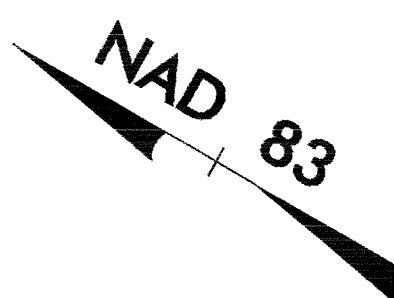


REVISIONS



PROJECT REFERENCE NO. R-2417BB	SHEET NO. EC-18/CONST.7
RW SHEET NO.	
ROADWAY DESIGN ENGINEER	HYDRAULICS ENGINEER



BL-259
PINC 46+29.26
-L- STA. 529+90.72
OFFSET = 2.78'

18 x 6 x 3

20 x 10 x 3
4' weir

18 x 6 x 3

BL-261 PINC 50+31.75
-T2- ELEV=379.51'
-L- STA. 533+93.19
OFFSET = 1'

BL-262
PINC 51+79.26
-L- STA. 535+41.13
OFFSET = 9.79'

BL-263
PINC 55+48.54
-L- STA. 5410+28.54
OFFSET = 320.09'

18 x 6 x 3

BL-260
PINC 47+97.03
-L- STA. 531+58.38
OFFSET = 10.05'

18 x 6 x 3

40 x 20 x 3
6' weir

20 x 10 x 3
4' weir

40 x 20 x 3
6' weir

35 x 18 x 3
6' weir

20 x 10 x 3
6' weir

18 x 6 x 3

18 x 6 x 3

18 x 6 x 3

RUTH CALCUTT
DB 328 PG 547

-L-

Pls Sta 519+74.38	Pls Sta 537+45.20	Pls Sta 552+19.72
Δs = 3°12'16.8"	Δ = 58°45'33.1" (RT)	Δs = 3°12'16.8"
Ls = 330.00'	D = 1°56'32.0"	Ls = 330.00'
LT = 220.04'	L = 3,025.35'	LT = 220.04'
ST = 110.03'	T = 1,660.86'	ST = 110.03'
	R = 2,950.00'	
	e = 0.07	

GARY M. THOMAS SR.
DB 438 PG 934
DB 438 PG 937
PC 7 SLIDE 18-F

SEE SHEET 16 & 17 FOR -L- PROFILE