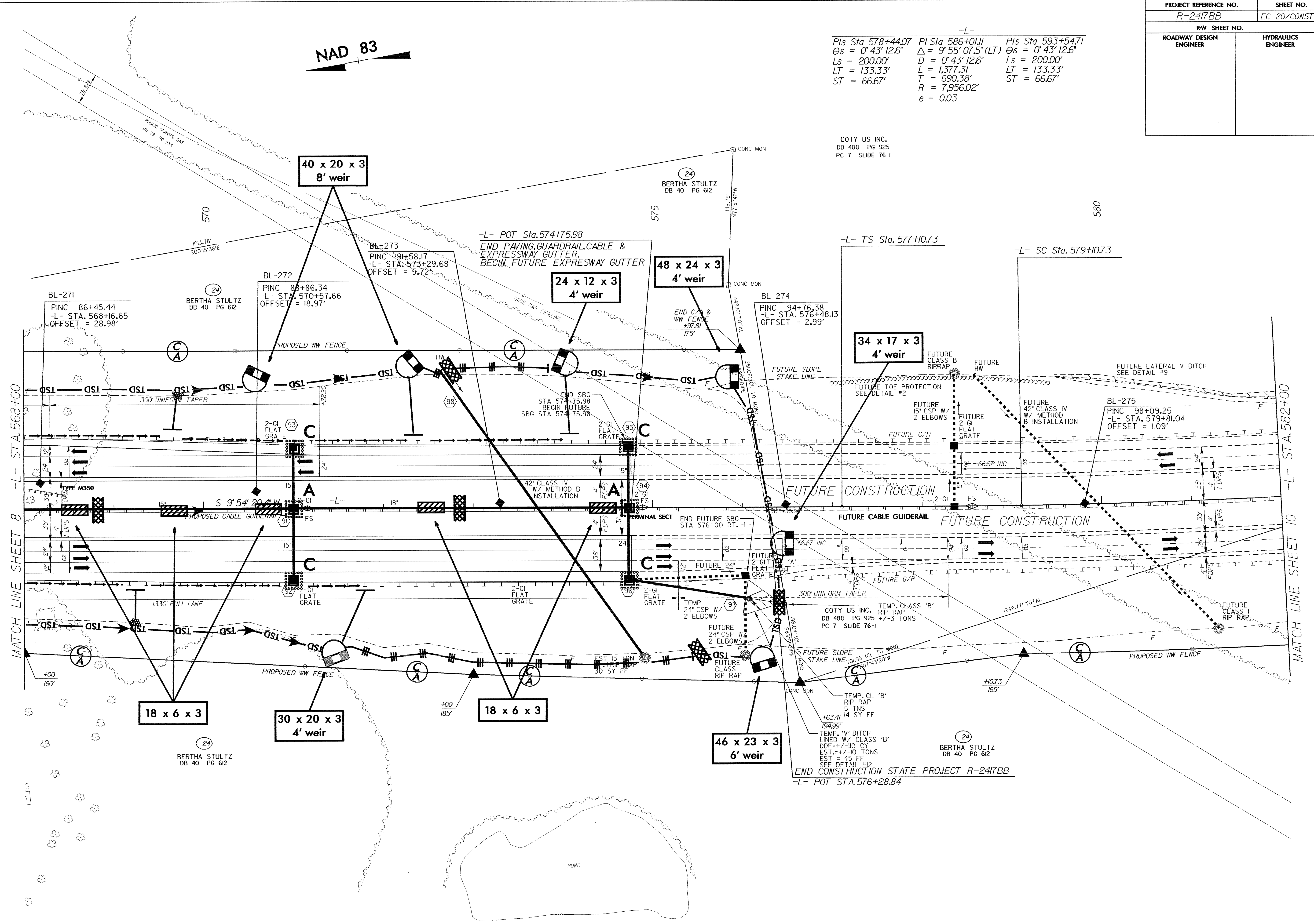


PROJECT REFERENCE NO.	SHEET NO.
R-2417BB	EC-20/CONST.9
R/W SHEET NO.	
ROADWAY DESIGN ENGINEER	HYDRAULICS ENGINEER

-L-  
 PIs Sta 578+44.07    PI Sta 586+01.11    PIs Sta 593+54.71  
 $\theta_s = 0^\circ 43' 12.6''$      $\Delta = 9^\circ 55' 07.5''$  (LT)     $\theta_s = 0^\circ 43' 12.6''$   
 $L_s = 200.00'$      $D = 0^\circ 43' 12.6''$      $L_s = 200.00'$   
 $LT = 133.33'$      $L = 1,377.31'$      $LT = 133.33'$   
 $ST = 66.67'$      $T = 690.38'$      $ST = 66.67'$   
 $R = 7,956.02'$      $e = 0.03$

COTY US INC.  
 DB 480 PG 925  
 PC 7 SLIDE 76-1



SEE SHEET 18 FOR -L- PROFILE