

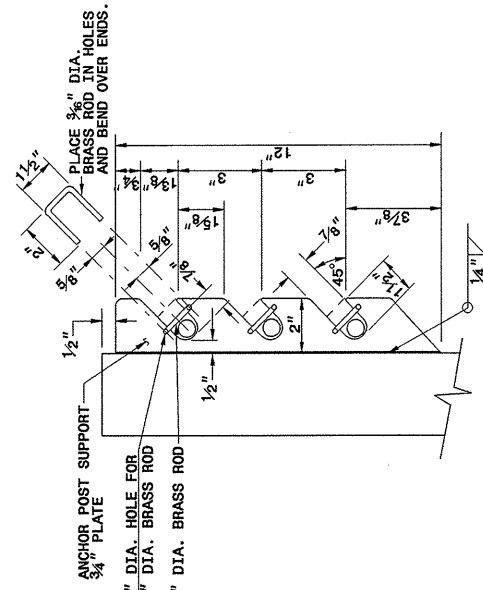
14-APR-2004 14:19  
 M:\Special Details\ssward\stds\02\stds to Special Details/english\86501\0865d01.dgn  
 erickward AT US212268

5/14/99

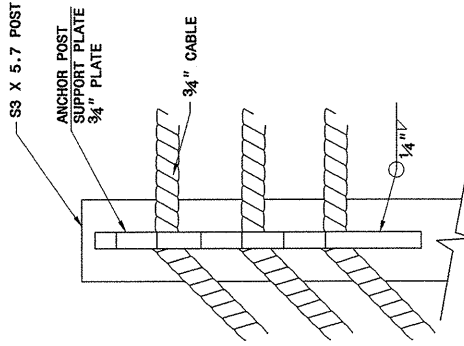
STATE OF  
 NORTH CAROLINA  
 DEPT. OF TRANSPORTATION  
 DIVISION OF HIGHWAYS  
 RALEIGH, N.C.

ENGLISH DETAIL DRAWING FOR  
**CABLE GUIDERAIL**  
 ANCHOR POST DETAILS

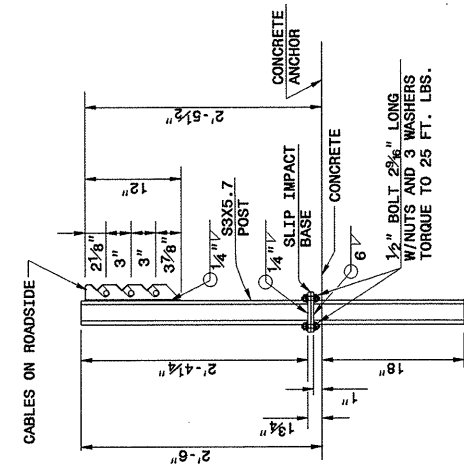
SHEET 7 OF 11  
**865D01**



**SIDE VIEW OF POST TOP**



**FRONT VIEW OF POST TOP**  
 (ROAD SIDE)

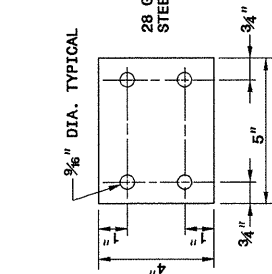


**ANCHOR POST DETAIL**

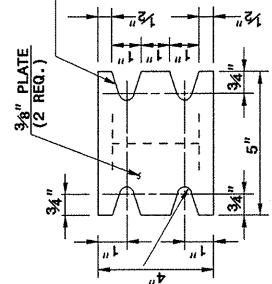
STATE OF  
 NORTH CAROLINA  
 DEPT. OF TRANSPORTATION  
 DIVISION OF HIGHWAYS  
 RALEIGH, N.C.

ENGLISH DETAIL DRAWING FOR  
**CABLE GUIDERAIL**  
 ANCHOR POST DETAILS

SHEET 7 OF 11  
**865D01**



**KEEPER PLATE**



**SLIP IMPACT BASE**  
 (KEEPER PLATE NOT SHOWN)

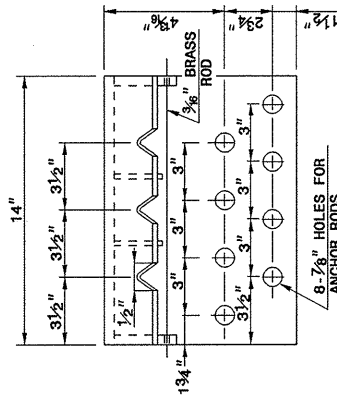
1/2" BOLT, 2 3/8" LONG.  
 W/NUT & 3 WASHERS. TORQUE  
 TO 25 FT. LBS. 1 WASHER UNDER  
 HEAD, 1 BETWEEN PLATE'S  
 1 UNDER NUT. AN ADDITIONAL  
 1/8" THICK WASHER MAY BE  
 PLACED BETWEEN PLATE'S TO  
 PLUMB THE ANCHOR POST.

DIR OF  
 TRAFFIC

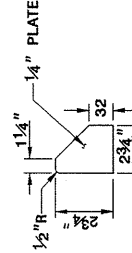
STATE OF  
 NORTH CAROLINA  
 DEPT. OF TRANSPORTATION  
 DIVISION OF HIGHWAYS  
 RALEIGH, N.C.

ENGLISH DETAIL DRAWING FOR  
**CABLE GUIDERAIL**  
 ANCHOR DETAILS

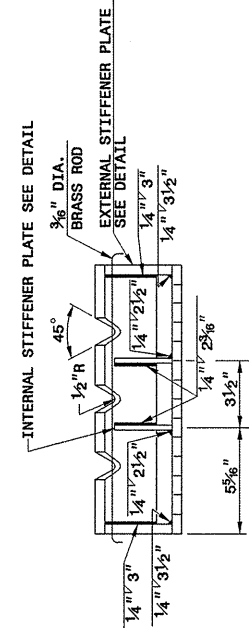
SHEET 8 OF 11  
**865D01**



**EXTERNAL STIFFENER PLATE**



**INTERNAL STIFFENER PLATE**



**ANCHOR ANGLE DETAILS**

STATE OF  
 NORTH CAROLINA  
 DEPT. OF TRANSPORTATION  
 DIVISION OF HIGHWAYS  
 RALEIGH, N.C.

ENGLISH DETAIL DRAWING FOR  
**CABLE GUIDERAIL**  
 ANCHOR DETAILS

SHEET 8 OF 11  
**865D01**

NOTE: SUBMIT ALTERNATE METHODS OF FABRICATING  
 ANCHOR ANGLES FOR APPROVAL.

**BREAKAWAY ANCHOR ANGLE**

DESIGN SERVICES UNIT  
 STANDARDS AND SPECIAL DESIGN  
 Office 919-250-4128 FAX 919-250-4119

**SEE PLATE FOR TITLE**

ORIGINAL BY: 2002 STANDARDS DATE: 1-15-02  
 MODIFIED BY: E.E. WARD DATE: 4-07-04  
 CHECKED BY: DATE:  
 FILE SPEC.: /usr/std/02stds to details/english/86501/0865D01.dgn