

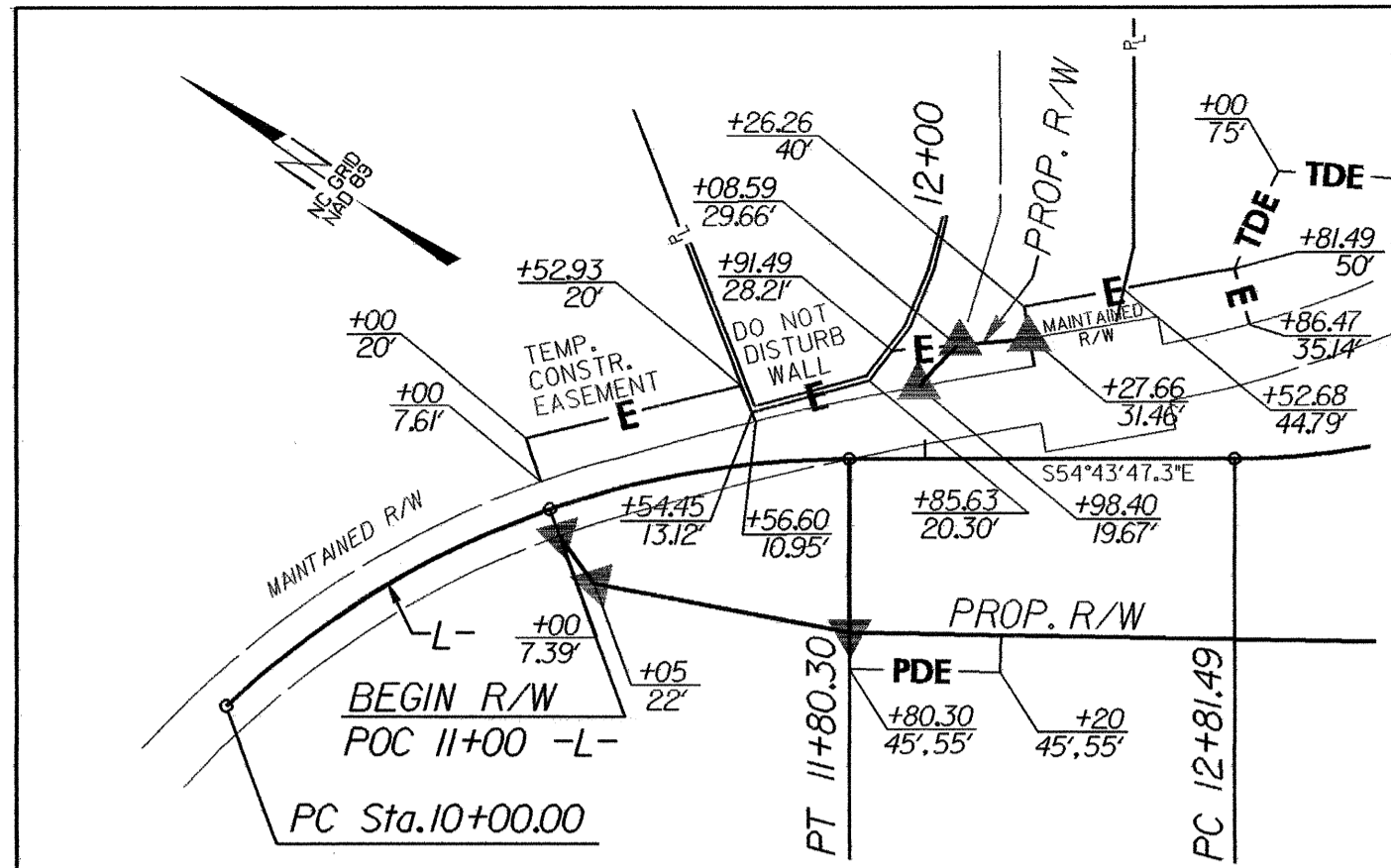
PROJECT REFERENCE NO.	SHEET NO.
B-3667	EC-4/CONST. 4
ROADWAY DESIGN ENGINEER	HYDRAULICS ENGINEER

NOTE:
UTILIZE TEMPORARY ROCK SEDIMENT DAM TYPE - B
AS STILLING BASIN WHERE APPLICABLE.

NCGRID NAD 83/95

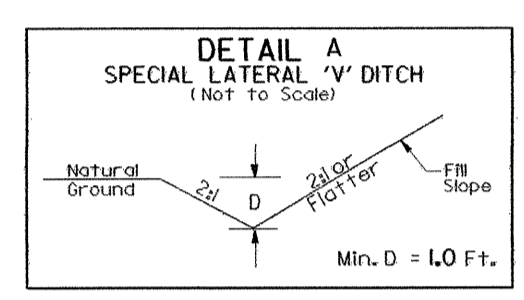
BASELINE DISTANCES		
BEARING	DISTANCE	
BL-1 TO BL-2	N 75°53'05.8" E	235.61'
BL-2 TO BL-3	S 64°19'22.9" E	217.73'
BL-3 TO BL-4	N 88°35'16.1" E	199.64'
BL-4 TO BL-5	N 71°50'23.4" E	220.56'

RONALD WIGGINS
WILLS & ESTATES
FILE #97E-16
DB 164 PG 197

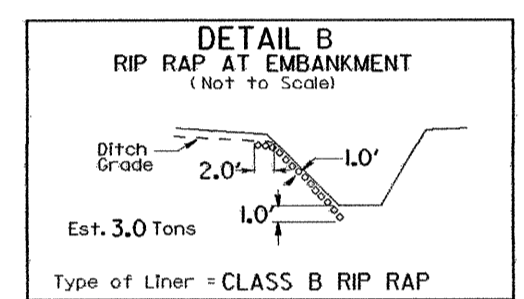


-L-
 PI Sta 14+09.78
 $\Delta = 65' 21' 22.8''$ (LT)
 $D = 28' 38' 52.4''$
 $L = 228.14'$
 $T = 128.29'$
 $R = 200.00'$
 $e = .02$
 $Ds = 25$ MPH

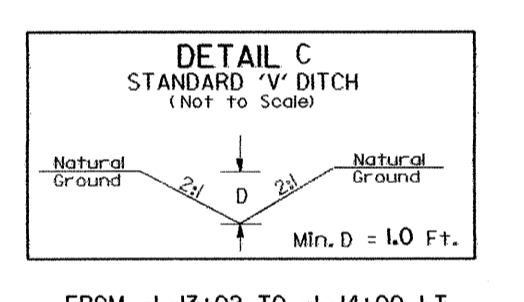
-L-
 PI Sta 17+32.08
 $\Delta = 30' 12' 13.7''$ (RT)
 $D = 2' 36' 05.9''$
 $L = 139.82'$
 $T = 71.58'$
 $R = 265.24'$
 $e = exist.$



FROM -L- 15+67 TO -L- 16+78 LT



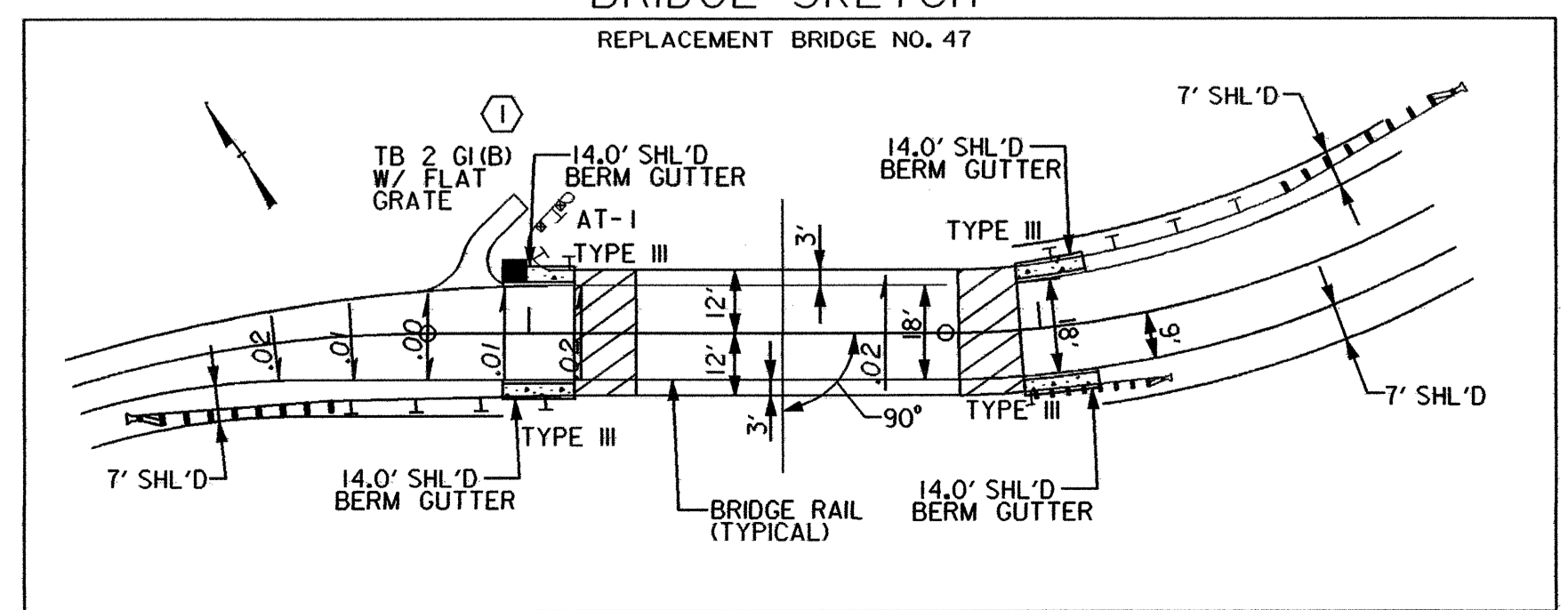
AT BEGIN DITCH -L- 15+65



FROM -L- 13+02 TO -L- 14+00 LT

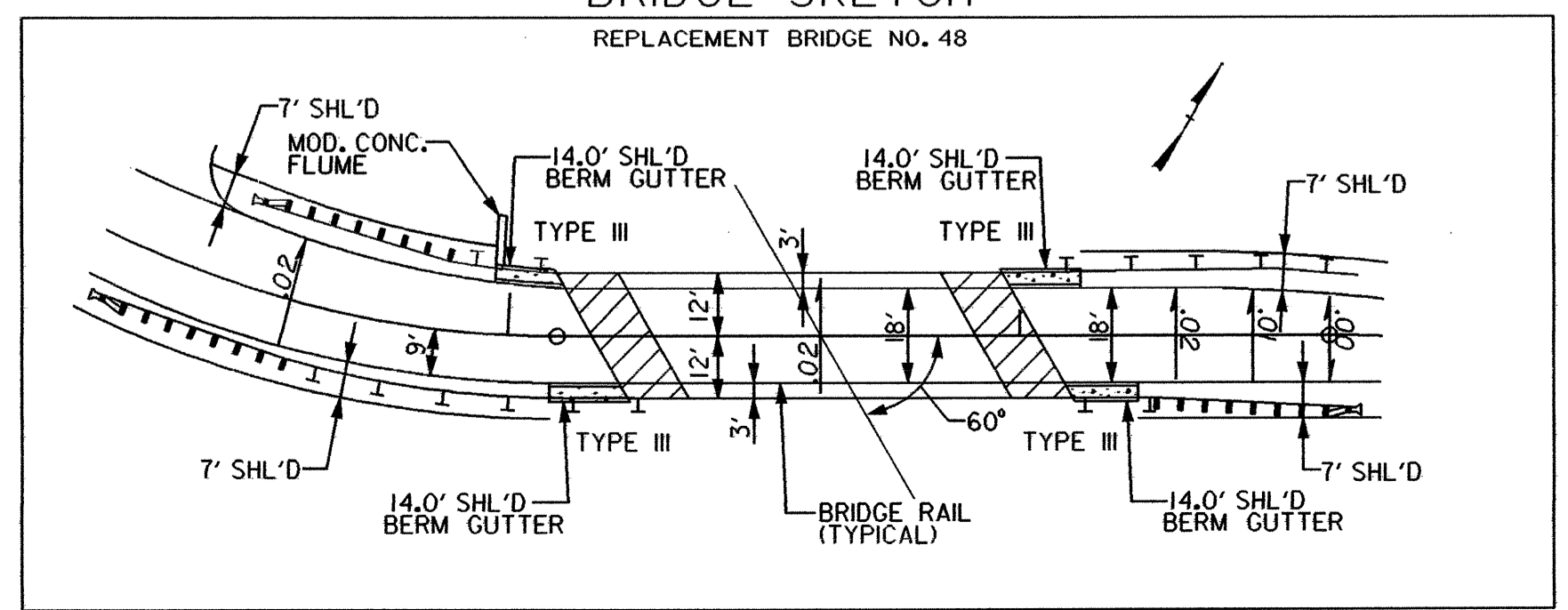
-L-
 PI Sta 10+94.58
 $\Delta = 42' 46' 07.7''$ (RT)
 $D = 23' 43' 17.3''$
 $L = 180.30'$
 $T = 94.58'$
 $R = 241.54'$
 $e = exist.$

BRIDGE SKETCH
REPLACEMENT BRIDGE NO. 47

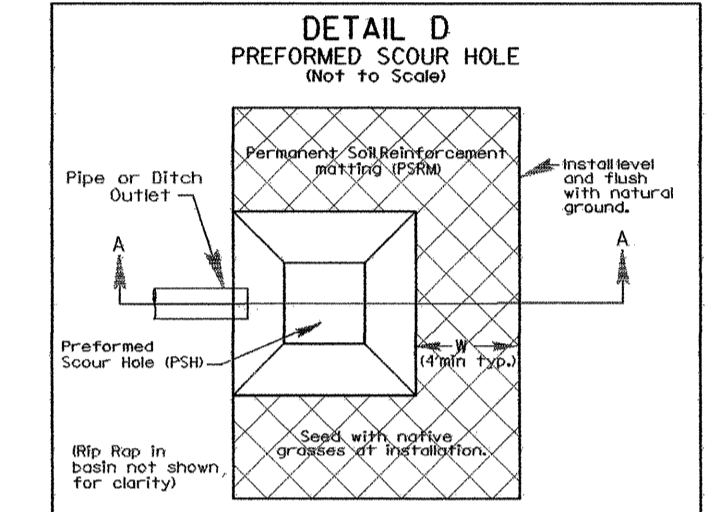


FOR STRUCTURE PLANS, SEE S-1 THRU S-

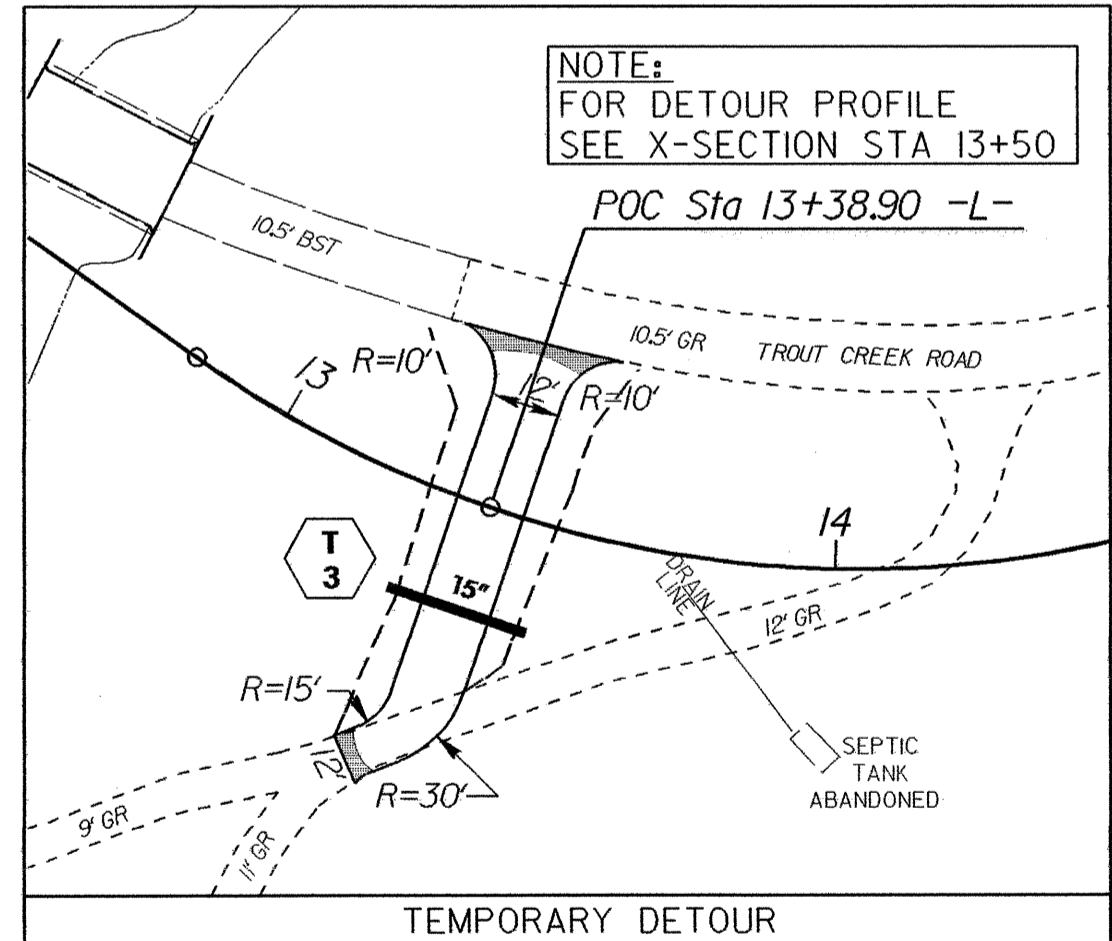
BRIDGE SKETCH
REPLACEMENT BRIDGE NO. 48



FOR STRUCTURE PLANS, SEE S-1 THRU S-



STATION	B	D	d	STONE	FF
11+99 RT	3.75'	1.25'	0.5'	4 TONS	8 SY



TEMPORARY DETOUR

INSERT
GEORGE CONNOR & KATHERINE CONNOR
DB 432 PG 162

HAROLD A. DARGEL,
TRUSTEE
DB 758 PG 123
DB 372 PG 124

END PROJECT
POC Sta. 17+40.00 -L-

NOTE:
FOR DETOUR PROFILE
SEE X-SECTION STA 13+50

POC Sta 13+38.90 -L-