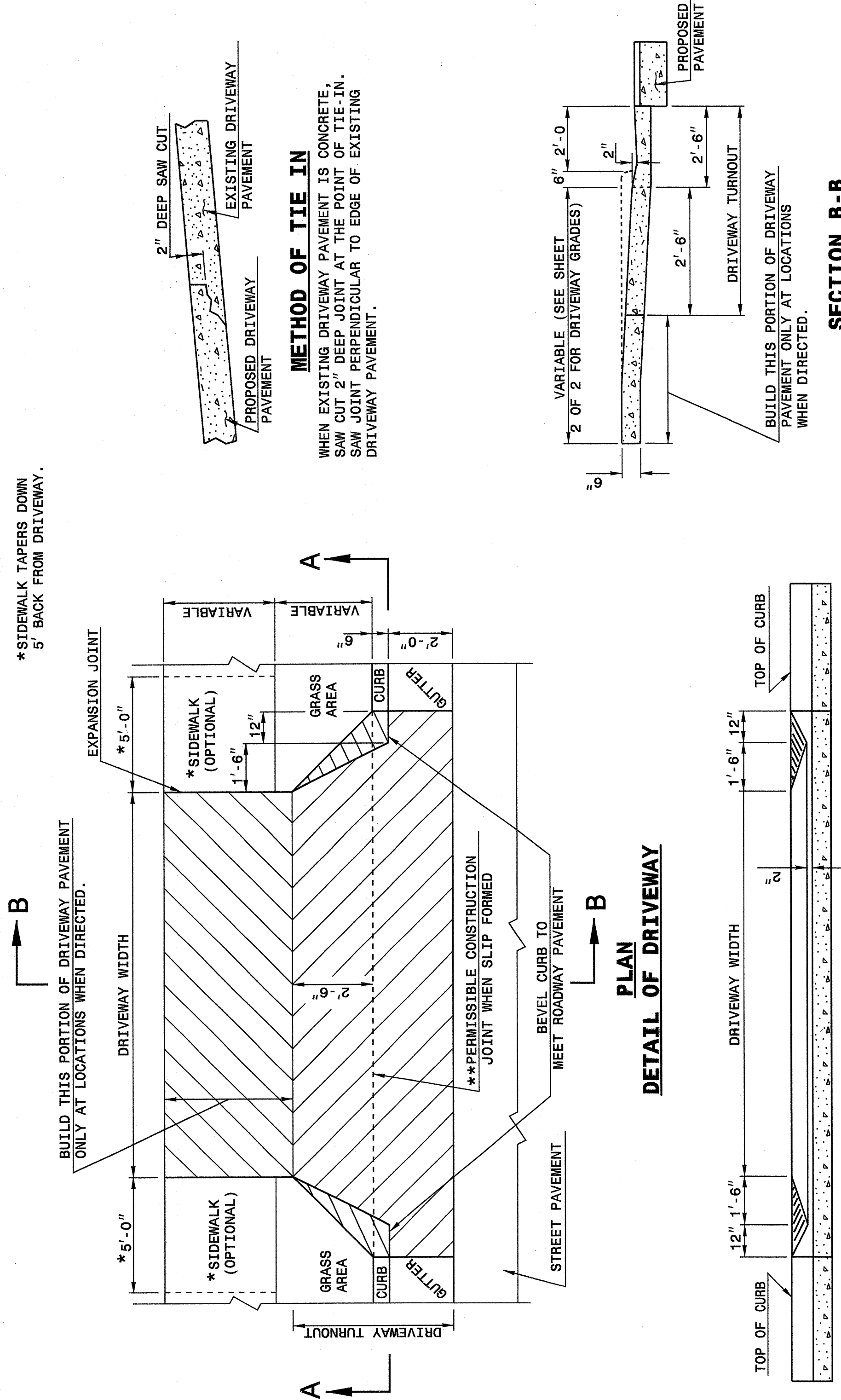


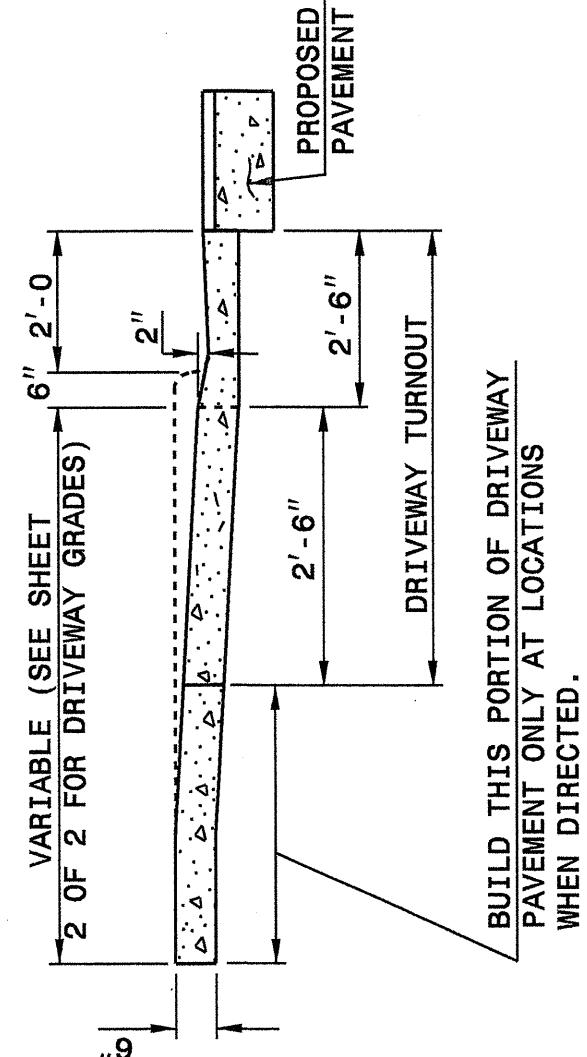
STATE OF NORTH CAROLINA
DEPT. OF TRANSPORTATION
DIVISION OF HIGHWAYS
RALEIGH, N.C.

ENGLISH DETAIL DRAWING FOR
DRIVEWAY TURNOUT
DROP CURB TYPE

SHEET 1 OF 2
848D03



METHOD OF TIE IN
WHEN EXISTING DRIVEWAY PAVEMENT IS CONCRETE, SAW CUT 2" DEEP JOINT AT THE POINT OF TIE-IN. SAW JOINT PERPENDICULAR TO EDGE OF EXISTING DRIVEWAY PAVEMENT.



GENERAL NOTES:
**NO CONSTRUCTION JOINT WILL BE PERMITTED IF FORMS ARE USED TO CAST DRIVEWAY. SLIP FORMING OF CURB AND GUTTER PERMITS THE USE OF CONSTRUCTION JOINT.

STATE OF NORTH CAROLINA
DEPT. OF TRANSPORTATION
DIVISION OF HIGHWAYS
RALEIGH, N.C.

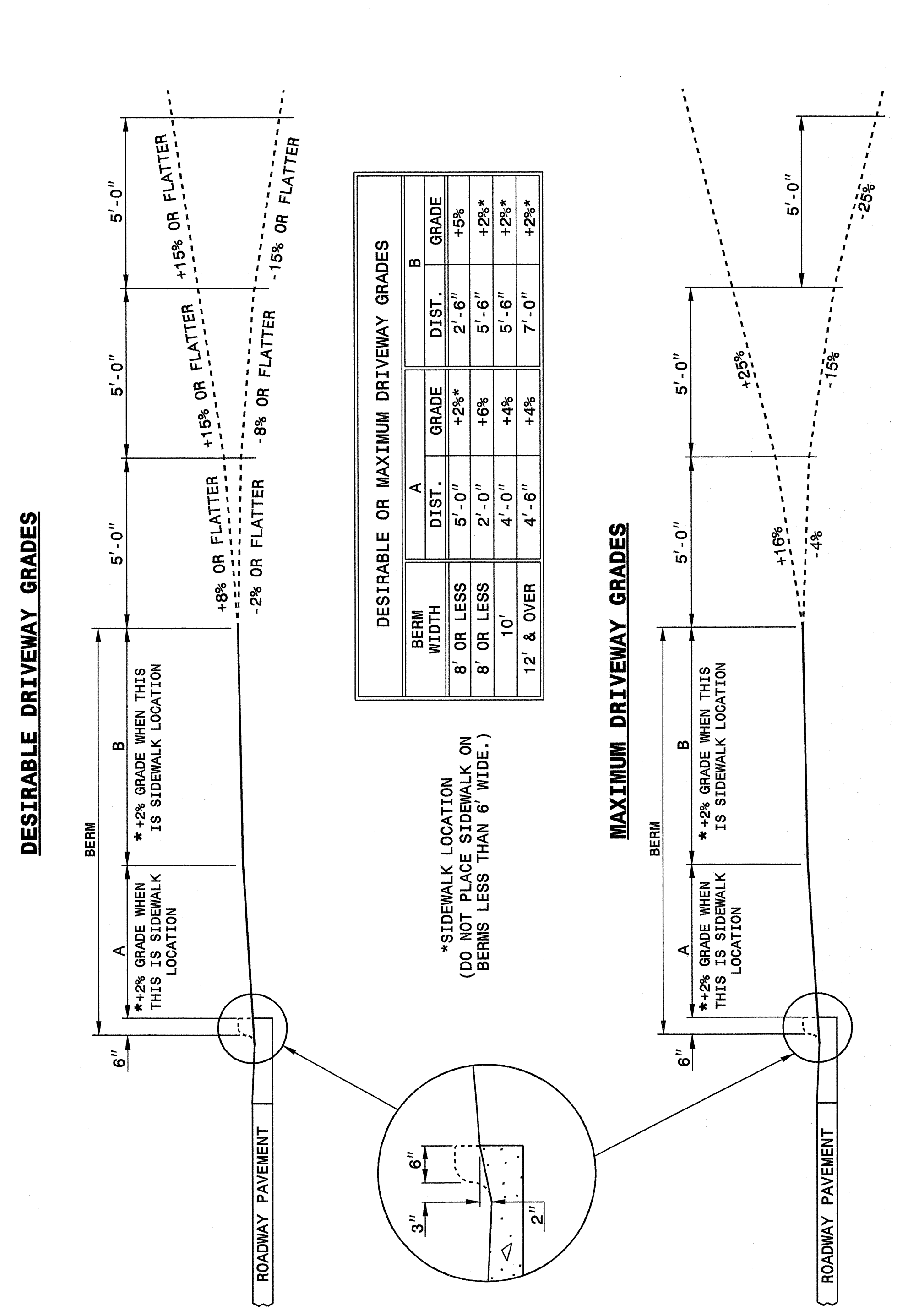
ENGLISH DETAIL DRAWING FOR
DRIVEWAY TURNOUT
DROP CURB TYPE

SHEET 1 OF 2
848D03

STATE OF NORTH CAROLINA
DEPT. OF TRANSPORTATION
DIVISION OF HIGHWAYS
RALEIGH, N.C.

ENGLISH DETAIL DRAWING FOR
DRIVEWAY TURNOUT
DRIVEWAY GRADES

SHEET 2 OF 2
848D03

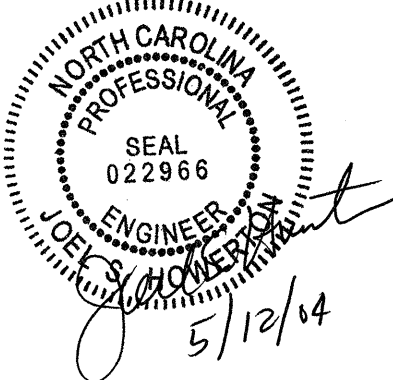


*SIDEWALK LOCATION (DO NOT PLACE SIDEWALK ON BERMS LESS THAN 6' WIDE.)

DESIGN SERVICES UNIT
STANDARDS AND SPECIAL DESIGN
Office 919-250-4128 FAX 919-250-4119

SEE PLATE FOR TITLE

ORIGINAL BY: 2002 STD. 848.03 DATE:
MODIFIED BY: E. E. WARD DATE: 03-27-03
CHECKED BY: *[Signature]* DATE: 4-4-03
FILE SPEC.: /usr/standards/02todet3/eng1ish/84803/848d03.dgn



04 APR 2003 08:06
 \\server\dwg\stds\02\stds to Special Details\english\84803\0848d03.dgn
 erickson AT 03188660
 5/14/99