

DATUM DESCRIPTION

THE LOCALIZED COORDINATE SYSTEM DEVELOPED FOR THIS PROJECT IS BASED ON THE STATE PLANE COORDINATES ESTABLISHED BY NCGS FOR MONUMENT "JENNINGS" WITH NAD 83 STATE PLANE GRID COORDINATES OF NORTHING: 585473.9767(F1) EASTING: 967996.7746(F1) THE AVERAGE COMBINED GRID FACTOR USED ON THIS PROJECT (GROUND TO GRID) IS: 0.9997780195 THE N.C. LAMBERT GRID BEARING AND LOCALIZED HORIZONTAL GROUND DISTANCE FROM "JENNINGS" TO -L- STATION 10+00 IS N 65° 49' 55.4" W 854.16' ALL LINEAR DIMENSIONS ARE LOCALIZED HORIZONTAL DISTANCES VERTICAL DATUM USED IS NGVD 29

-Y1-

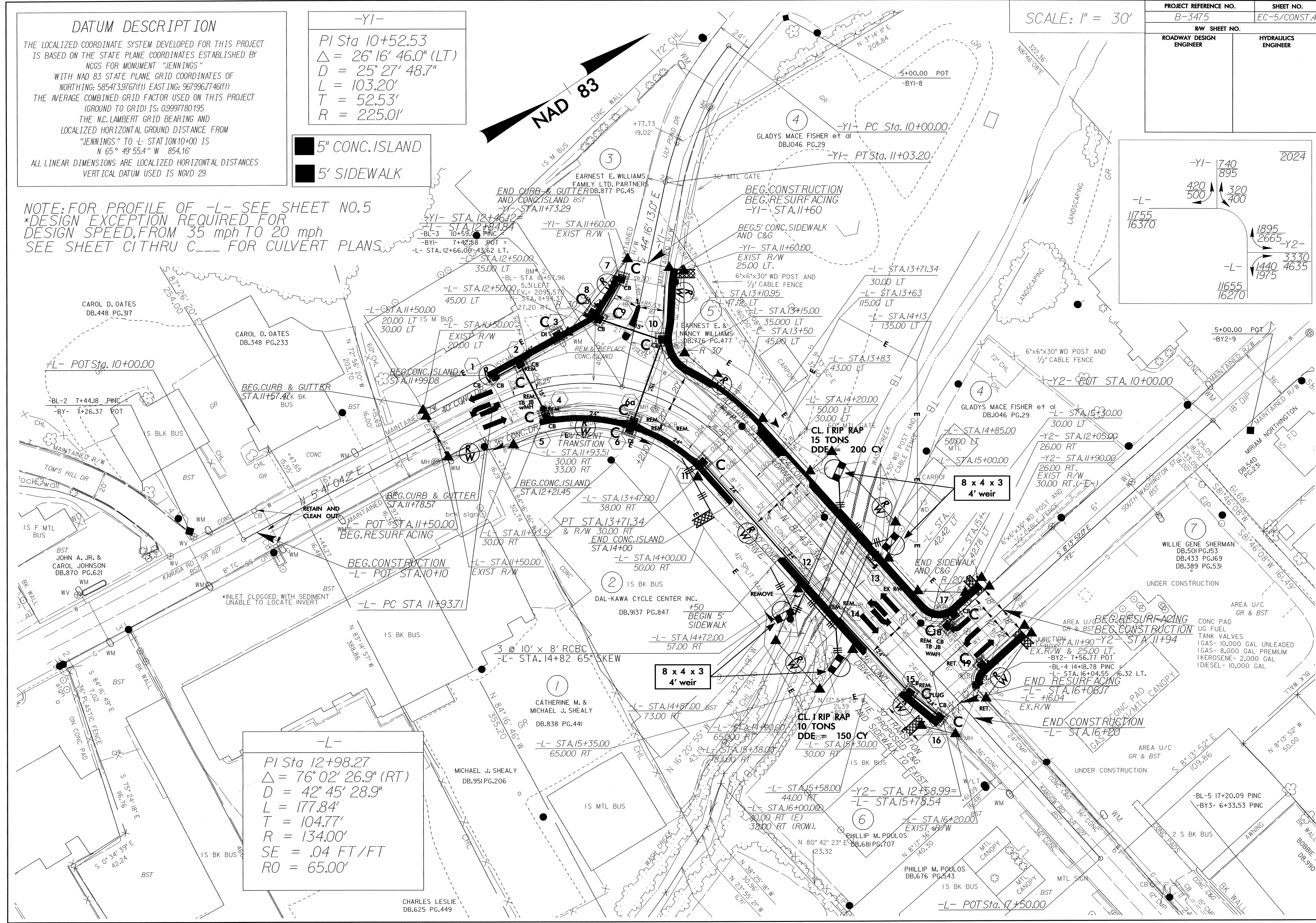
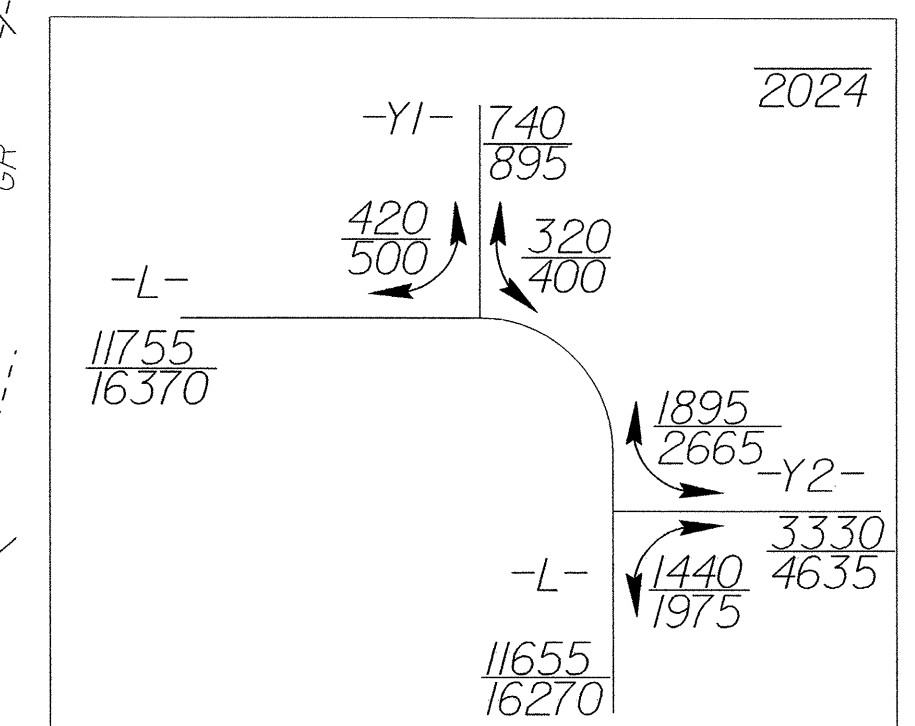
PI Sta 10+52.53
 $\Delta = 26^\circ 16' 46.0" (LT)$
 $D = 25^\circ 27' 48.7"$
 $L = 103.20'$
 $T = 52.53'$
 $R = 225.01'$

■ 5" CONC. ISLAND
 ■ 5' SIDEWALK

NOTE: FOR PROFILE OF -L- SEE SHEET NO.5
 *DESIGN EXCEPTION REQUIRED FOR DESIGN SPEED, FROM 35 mph TO 20 mph
 SEE SHEET CITHRU C FOR CULVERT PLANS

SCALE: 1" = 30'

PROJECT REFERENCE NO. B-3475		SHEET NO. EC-5/CONST.4	
RW SHEET NO.		HYDRAULICS ENGINEER	
ROADWAY DESIGN ENGINEER			



-L-
 PI Sta 12+98.27
 $\Delta = 76^\circ 02' 26.9" (RT)$
 $D = 42^\circ 45' 28.9"$
 $L = 177.84'$
 $T = 104.77'$
 $R = 134.00'$
 $SE = .04 FT/FT$
 $RO = 65.00'$

CHARLES LESLIE
 DB.625 PG.449