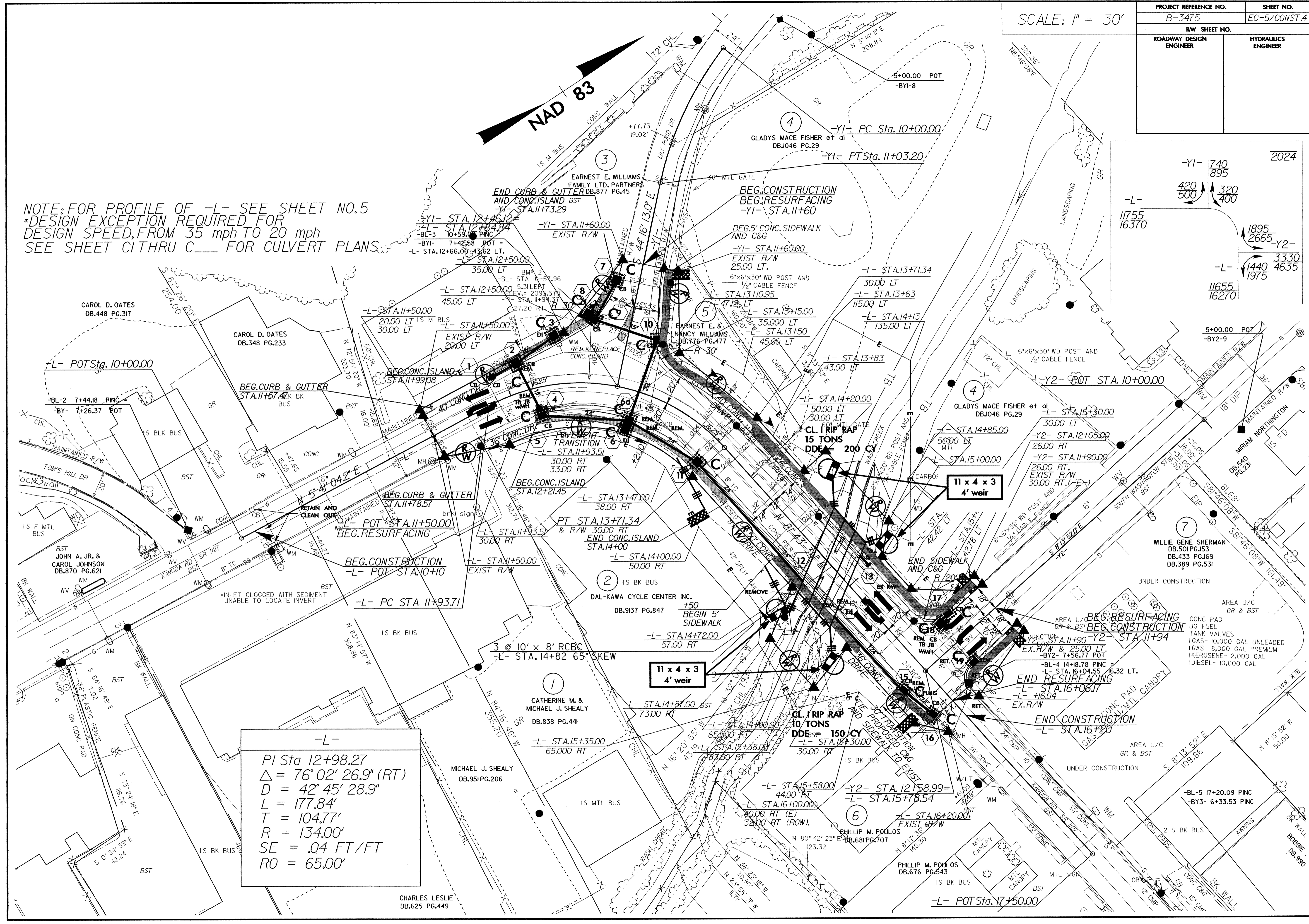
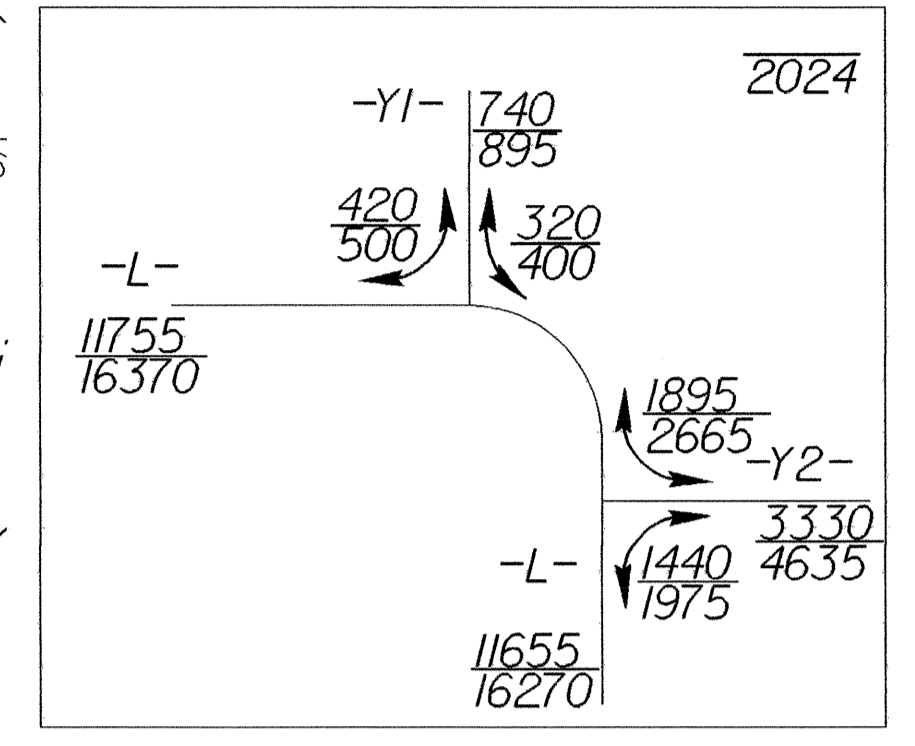


PROJECT REFERENCE NO. B-3475		SHEET NO. EC-5/CONST.4	
RW SHEET NO.		HYDRAULICS ENGINEER	
ROADWAY DESIGN ENGINEER		HYDRAULICS ENGINEER	

NOTE: FOR PROFILE OF -L- SEE SHEET NO.5
 *DESIGN EXCEPTION REQUIRED FOR
 DESIGN SPEED, FROM 35 mph TO 20 mph
 SEE SHEET C I THRU C FOR CULVERT PLANS.



-L-
 PI Sta 12+98.27
 $\Delta = 76^{\circ} 02' 26.9''$ (RT)
 $D = 42^{\circ} 45' 28.9''$
 $L = 177.84'$
 $T = 104.77'$
 $R = 134.00'$
 $SE = .04$ FT/FT
 $RO = 65.00'$

CHARLES LESLIE
 DB.625 PG.449