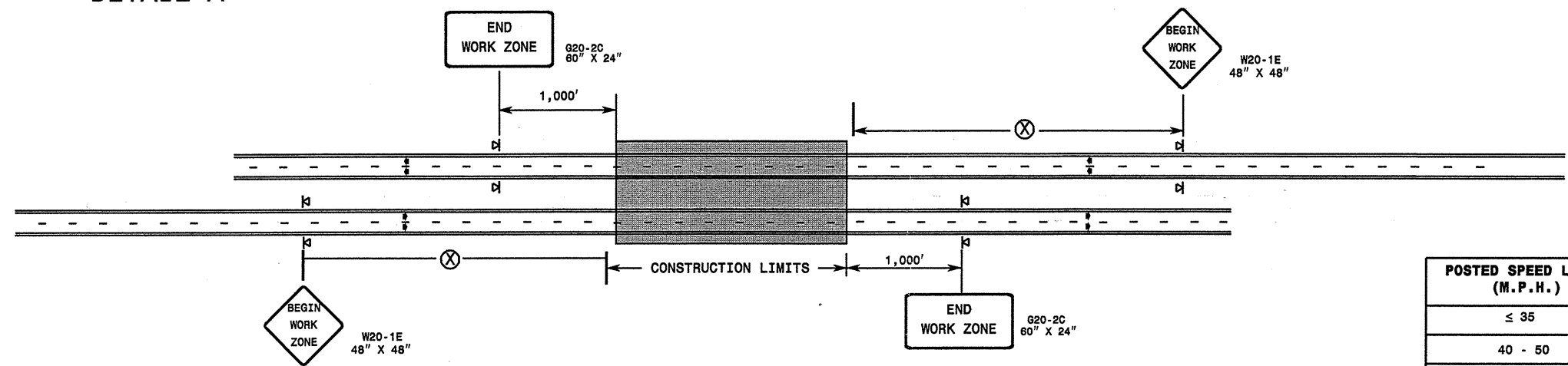


WBS Elements: 39400, 6CR.20261.11, 6CR.302620.11, 6CR.302644.11, 6CR.10431.11, 6CR.20431.11, 6CR.304310.11, 6CR.304324.11 & 6CR.304349.11

PROJ. REFERENCE NO. See to the Left	SHEET NO. TCP-3
--	--------------------

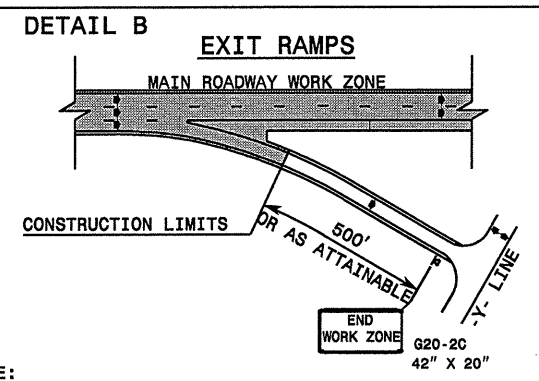
**DETAIL A**



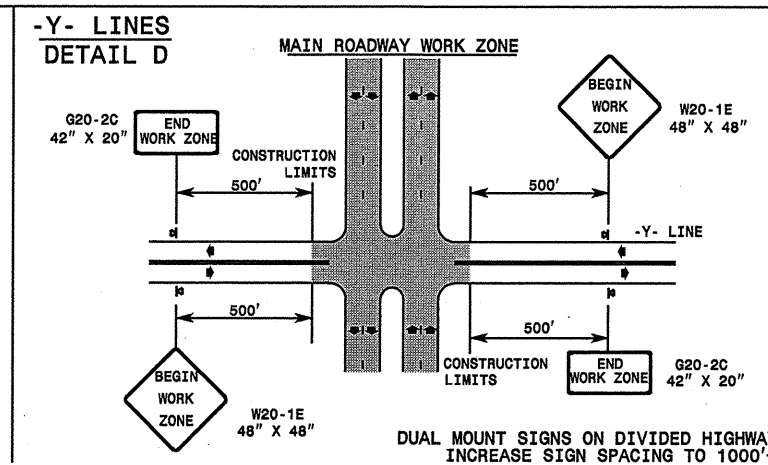
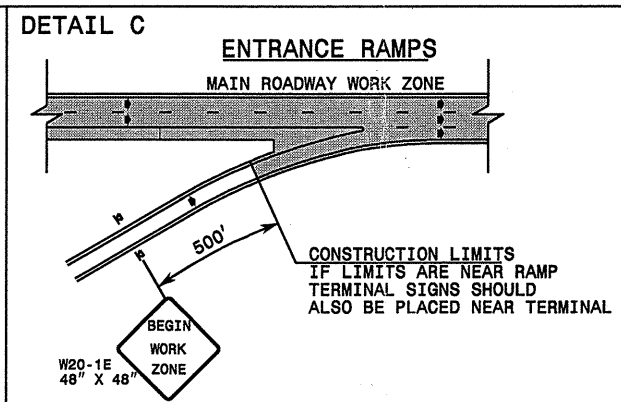
POSTED SPEED LIMIT (M.P.H.)	RECOMMENDED MINIMUM SIGN SPACING
≤ 35	1200'
40 - 50	2200'
55 - 65	6800'

STATE OF NORTH CAROLINA  
 DEPT. OF TRANSPORTATION  
 DIVISION OF HIGHWAYS  
 RALEIGH, N.C.

**ROADWAYS INTERSECTING ALONG HIGHWAY WORK ZONE**



**NOTE:**  
SIGN NOT REQUIRED IF ADVANCE WARNING SIGNS HAVE BEEN PLACED ALONG -Y- LINE THAT RAMP INTERSECTS. IF CONSTRUCTION LIMITS ARE AT END OF RAMP, PLACE SIGN AT END OF RAMP.



**GENERAL NOTES**

- DO NOT INSTALL ADVANCE WARNING SIGNS MORE THAN 3 DAYS PRIOR TO BEGINNING OF WORK.
- ALL SIGN SPACING DIMENSIONS ARE APPROXIMATE, FIELD ADJUST AS NECESSARY OR AS DIRECTED.
- WHEN THERE ARE CONSTRUCTION LIMITS ON A DIVIDED -Y- LINE GREATER THAN 1 MILE IN LENGTH, USE THE SAME SIGNING AS FOR A MAIN ROADWAY WORK ZONE. (SEE DETAIL A)
- USE PORTABLE SIGNS.

**LEGEND**

Ⓚ	PORTABLE SIGN
➔	DIRECTION OF TRAFFIC FLOW

APPROVED: \_\_\_\_\_ DATE: \_\_\_\_\_

SEAL

**DETAIL DRAWING FOR INTERSTATE AND FREEWAY WORK ZONE SIGNS**

SCALE: NONE	REVISIONS
DATE: 09-08-2001	
DWG. BY: MMM	
DESIGN BY: MMM	
REVIEWED BY:	

**DETAIL DRAWING FOR INTERSTATE AND FREEWAY WORK ZONE SIGNS (SHORT-DURATION LANE CLOSURES)**