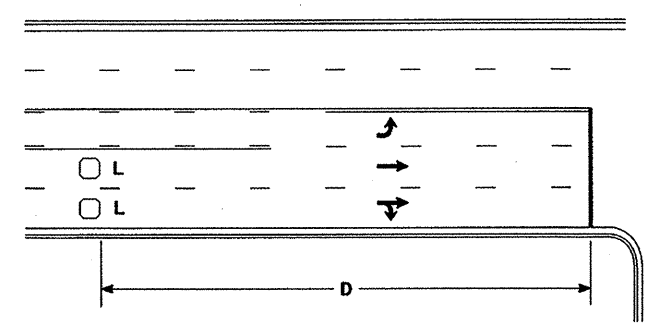


### High Speed Detection [≥40 mph (64 km/hr)]

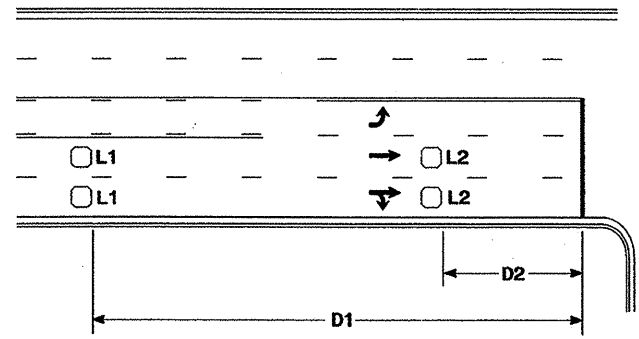


Speed Limit mph (km/hr)	D ft (m)
40 (64)	250 (75)
45 (72)	300 (90)
50 (80)	355 (110)
55 (88)	420 (130)

L = 6ft X 6ft (1.8m X 1.8m)  
Wired in series for TS1  
Controllers  
Wired separately for TS2,  
170, and 2070L Controllers

Volume Density Operation

OR

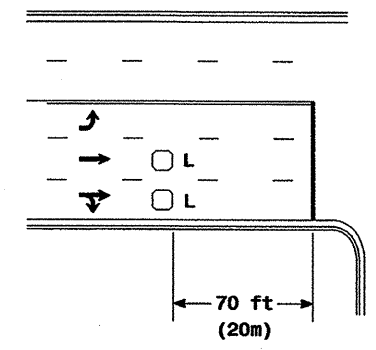


Speed Limit mph (km/hr)	D1 ft (m)	D2 ft (m)
40 (64)	250 (75)	80 (25)
45 (72)	300 (90)	90 (27)
50 (80)	355 (110)	100 (30)
55 (88)	420 (130)	110 (35)

L1 = 6ft X 6ft  
(1.8m X 1.8m)  
Wired in series  
L2 = 6ft X 6ft  
(1.8m X 1.8m)  
Wired in series

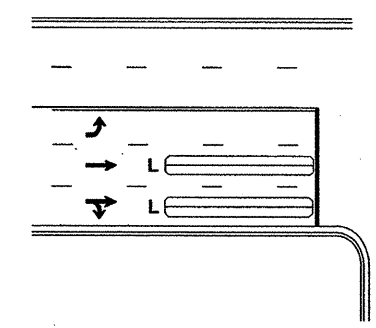
"Stretch" Operation

### Low Speed Detection [≤35 mph (56 km/hr)]



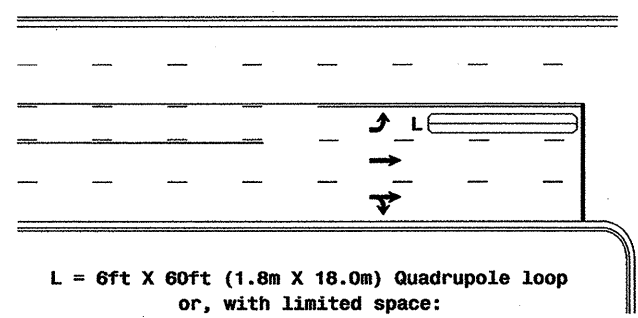
L = 6ft X 6ft (1.8m X 1.8m)  
Wired in series

OR



L = 6ft X 60ft (1.8m X 18.0m)  
Quadrupole loop, wired separately

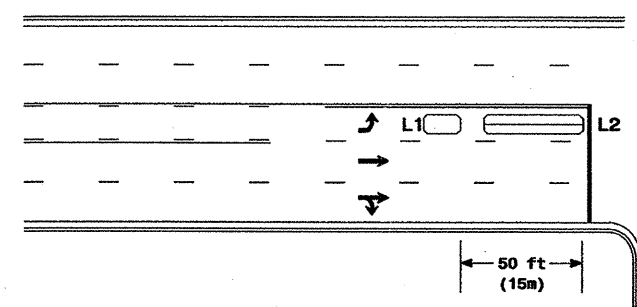
### Left Turn Lane Detection



L = 6ft X 60ft (1.8m X 18.0m) Quadrupole loop  
or, with limited space:  
6ft X 50ft (1.8m X 15.0m) Quadrupole loop  
or  
6ft X 40ft (1.8m X 12.0m) Quadrupole loop

Presence Loop Detection

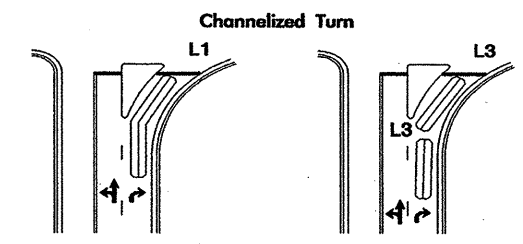
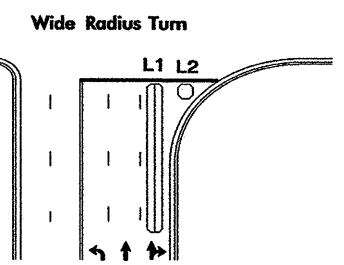
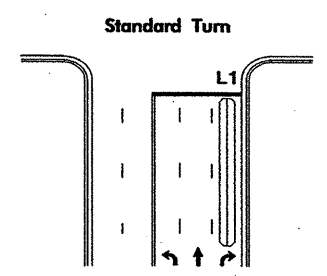
OR



L1 = 6ft X 15ft (1.8m X 4.6m) Queue detector  
L2 = 6ft X 40ft (1.8m X 12.0m) Quadrupole loop

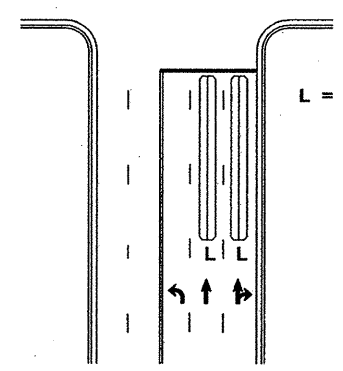
Queue Loop Detection

### Right Turn Lane Detection



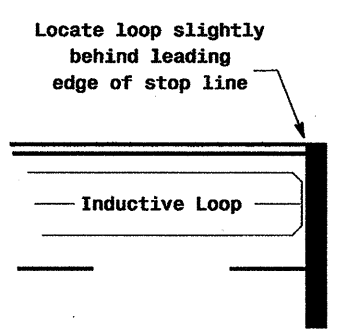
L1 = 6ft X 60ft (1.8m X 18.0m) Quadrupole loop  
L2 = 6ft X 6ft (1.8m X 1.8m) [Minimum] Presence loop  
Wired separately  
L3 = 6ft X 30ft (1.8m X 9.0m) Quadrupole loop  
Wired in series

### Side Street Detection



L = 6ft X 60ft (1.8m X 18.0m)  
Quadrupole loop  
Wired to separate  
detectors/channels

### Presence Loop Placement at Stop Lines



Note:  
Loop may be located in advance  
of stop line when stop line is  
greater than 15' (4.5m) from edge  
of intersecting roadway; or, when  
loop detects a permitted or  
exclusive/permitted left turn.

### Recommended Number of Turns

Single 6' X 6' (1.8m X 1.8m)  
loop (wired separately):

Length of Lead-in ft (m)	Number of Turns
< 250 (75)	3
250-375 (75-115)	4
375-525 (115-160)	5
> 525 (160)	6

Quadrupole loops: Use 2-4-2 turns  
6' X 15' (1.8m X 4.6m) Loops:  
Lead-in < 150' (45 m), use 2 turns  
Lead-in > 150' (45 m), use 3 turns

	<b>Typical Loop Locations</b>		
	PLAN DATE: July 2003 PREPARED BY: P. L. Alexander	REVIEWED BY: REVIEWED BY:	
222 N. McDowell St., Raleigh, NC 27603		REVISIONS:	SIGNATURE: P. L. Alexander DATE: 7/15/03 SIG. INVENTORY NO.:

15-JUL-2003 15:56  
U:\scd\loop\typ loc 12003.dgn  
P.L. Alexander