

SIGN NUMR: TYPE: D Ground
 QUANTITY: 1
 SIGN WIDTH: 4'-0"
 HEIGHT: 2'-0"
 TOTAL AREA: 8.0 Sq.Ft.
 MAT'L: 0.125 in. ALUMINUM
 BORDER TYPE: RECESSED
 RECESS: 0.38"
 WIDTH: 0.63"
 RADII: 1.5"
 NO. Z BARS: LENGTH: in.

BACKG. COLOR: Orange
 COPY COLOR: Black

DESIGN BY: DME
 PROJECT ID: B-4134

CHK BY: DIV: 4
 STD #: DATE: Jun 16, 2004

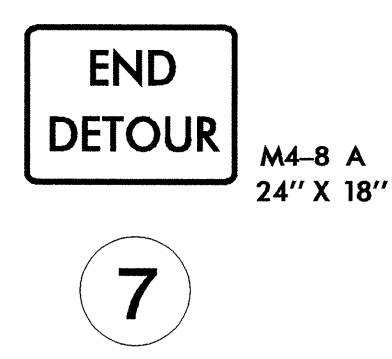
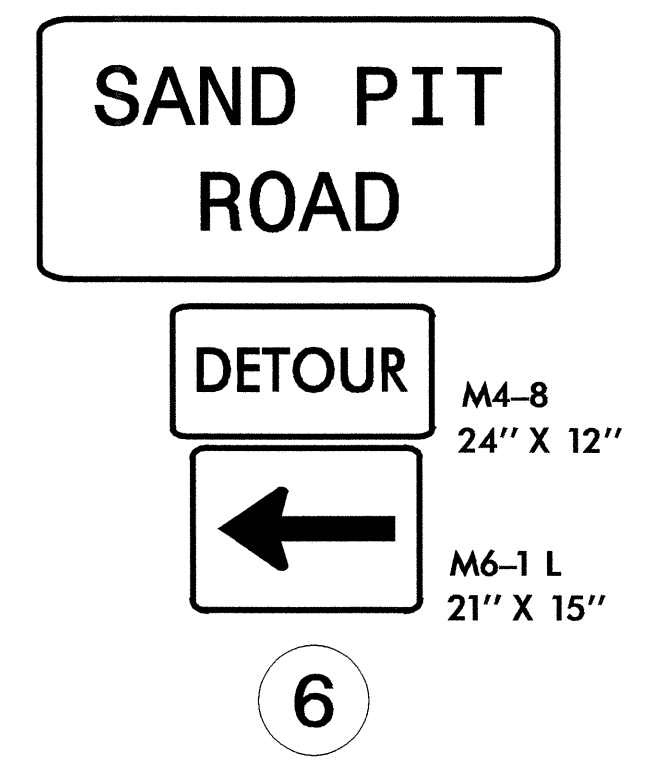
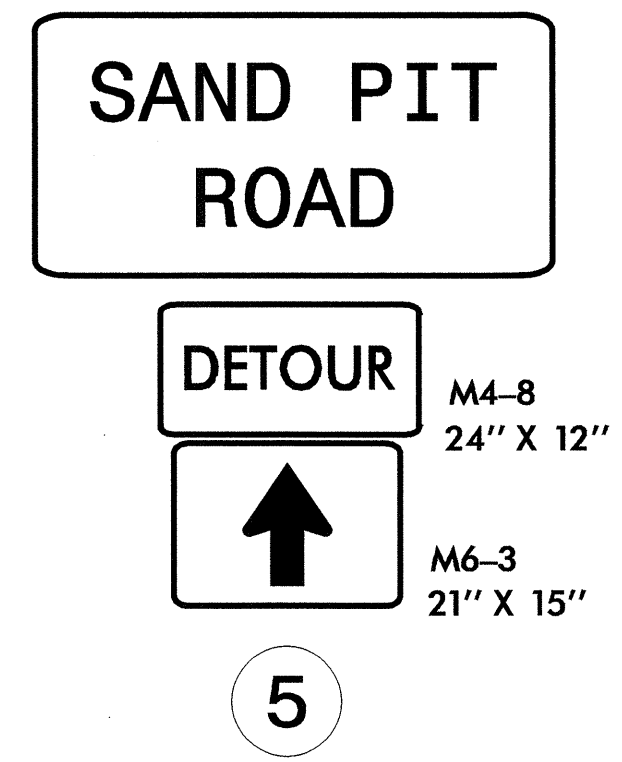
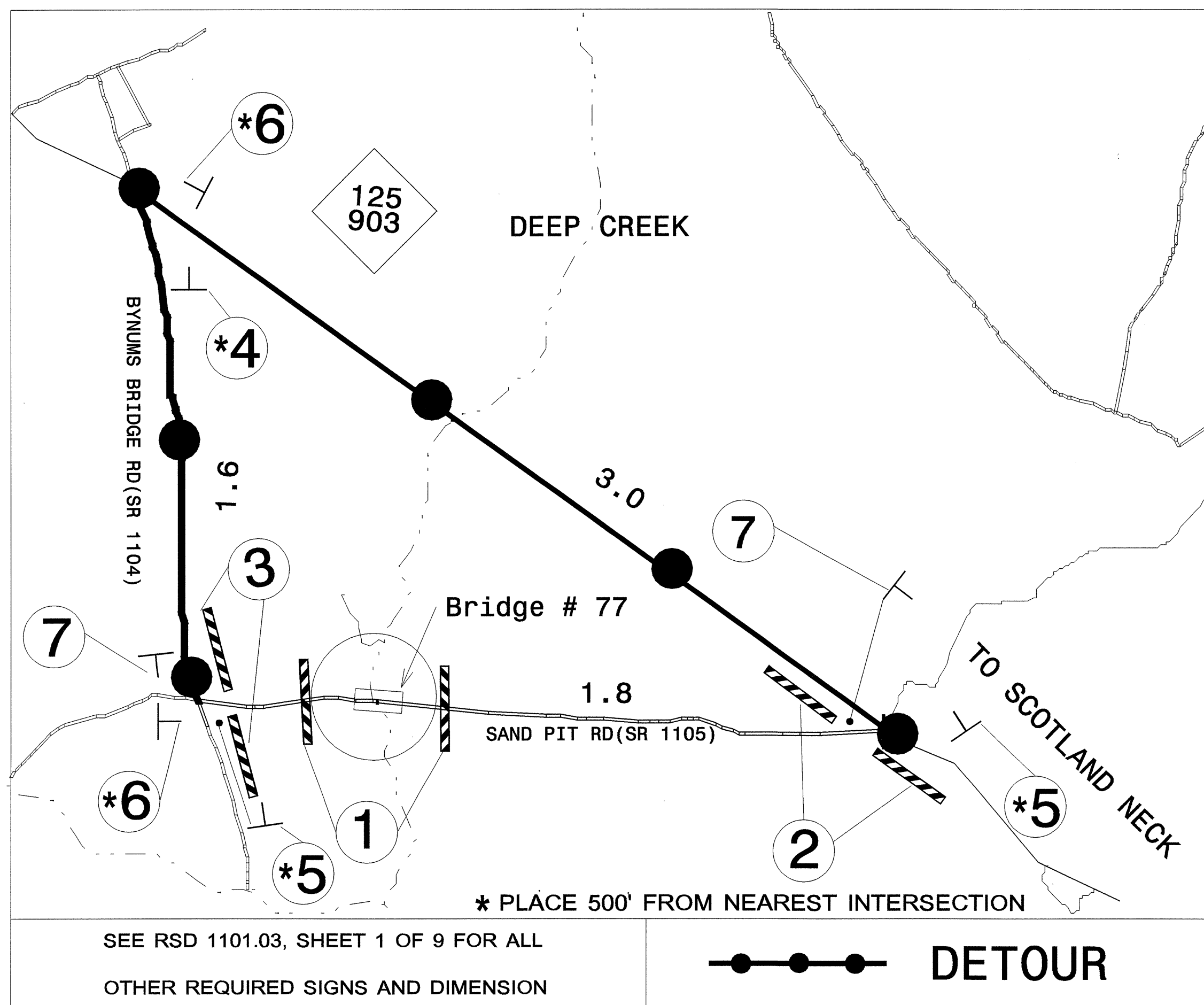
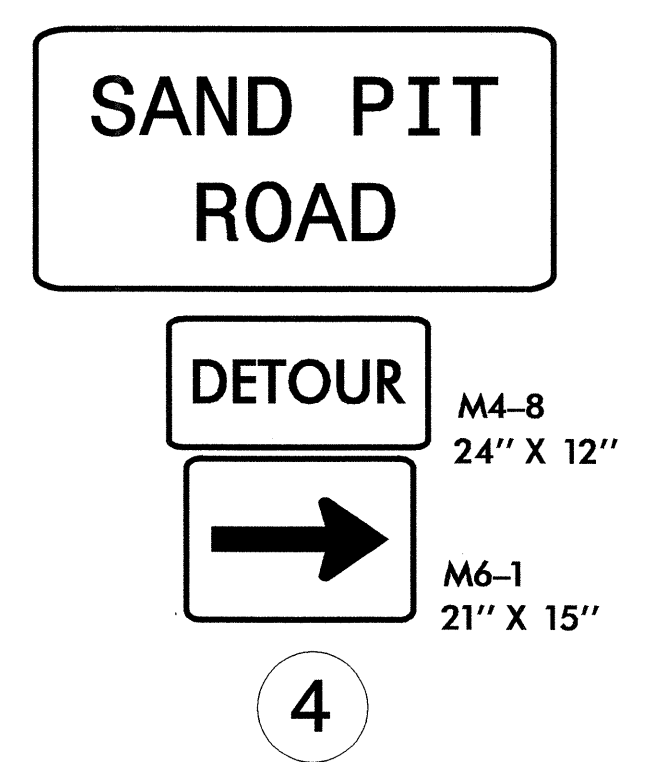
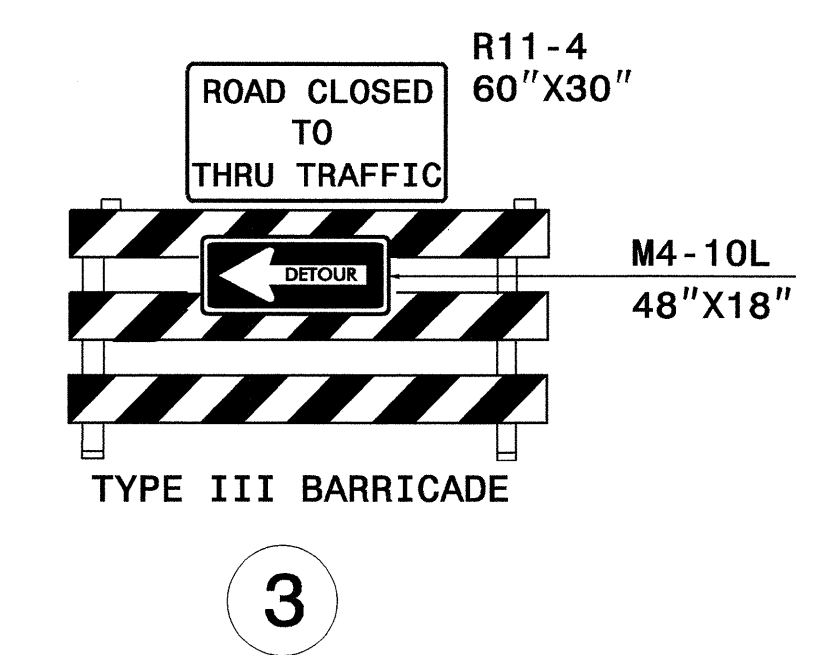
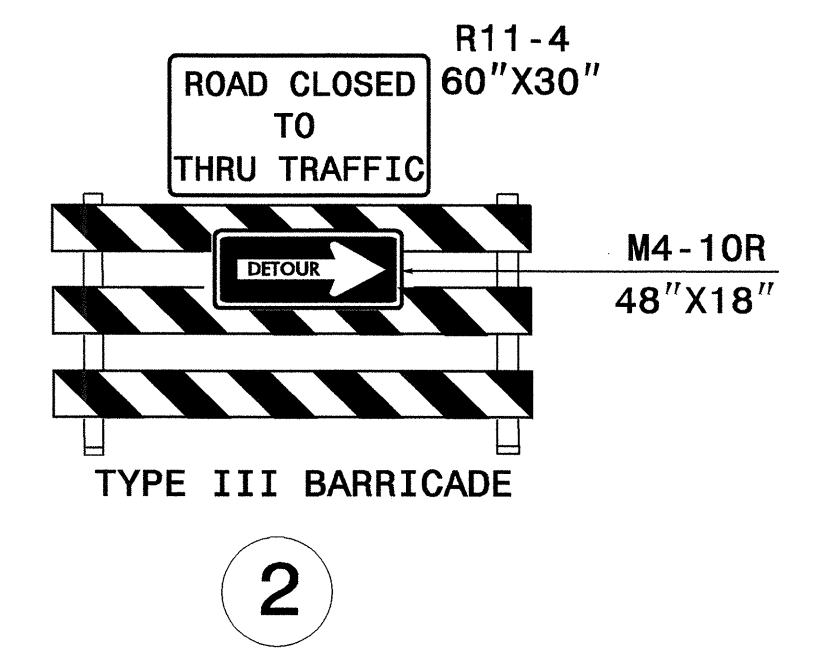
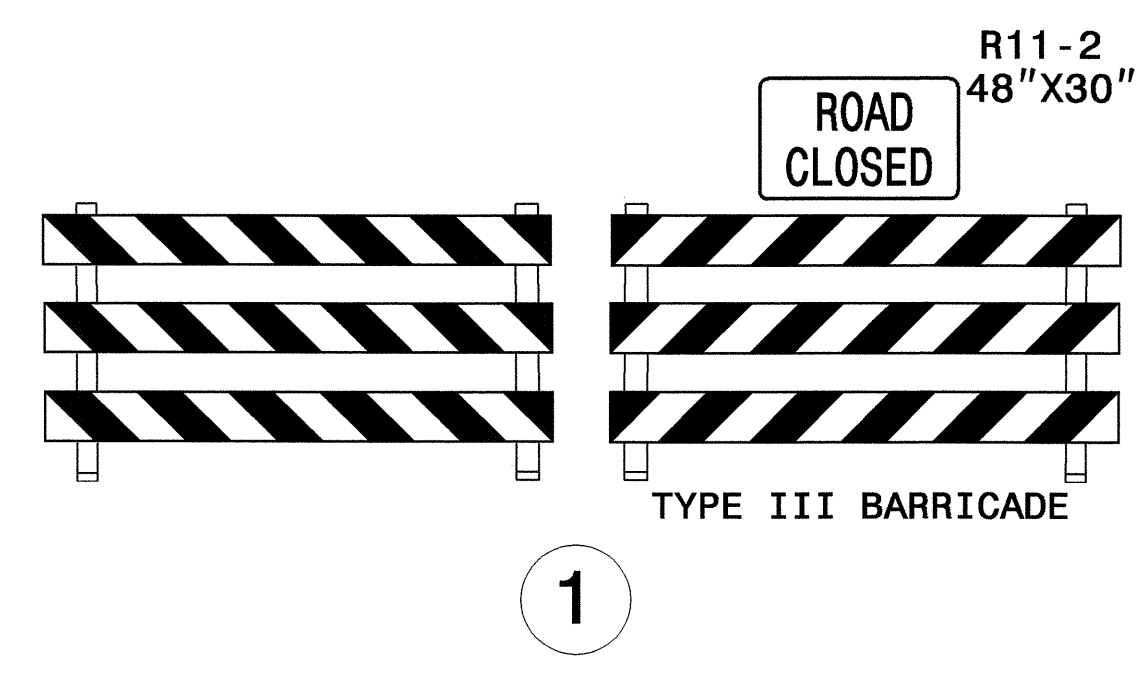
N. C. DEPARTMENT OF TRANSPORTATION
 DIVISION OF HIGHWAYS
 TRAFFIC ENGINEERING BRANCH
 SIGNING DEPARTMENT

SYMBOL	X	Y	WID	HT

NOTES:
 1. Legend and border shall be direct applied non-reflective sheeting.
 2. Background shall be Type I reflective sheeting.

Letter spacings are to start of next letter										Series/Size	Text Length
S	A	N	D	P	I	T				D6	38
5	5.2	6.2	5.5	4	6	5.5	2.1	3.7	5	D6	20.7
R	O	A	D								
13.7	5.2	5.4	6.2	4	13.7						

Spacing Factor is 1 unless specified otherwise
 FILENAME: SAND_PIT_



APPROVED: *[Signature]* DATE: *7/20/04*

DETOUR ROUTE/SIGN DESIGN DETAIL

SCALE: NONE		REVISIONS
DATE: 2004		
DWG. BY: DMS		
DESIGN BY: DMS		
REVIEWED BY:		CADD FILE

20-JUL-2004 09:31
 F:\TCP\Springett\TCP.dgn
 dspringett AT TET&T775