

**BENCHMARK DATA**

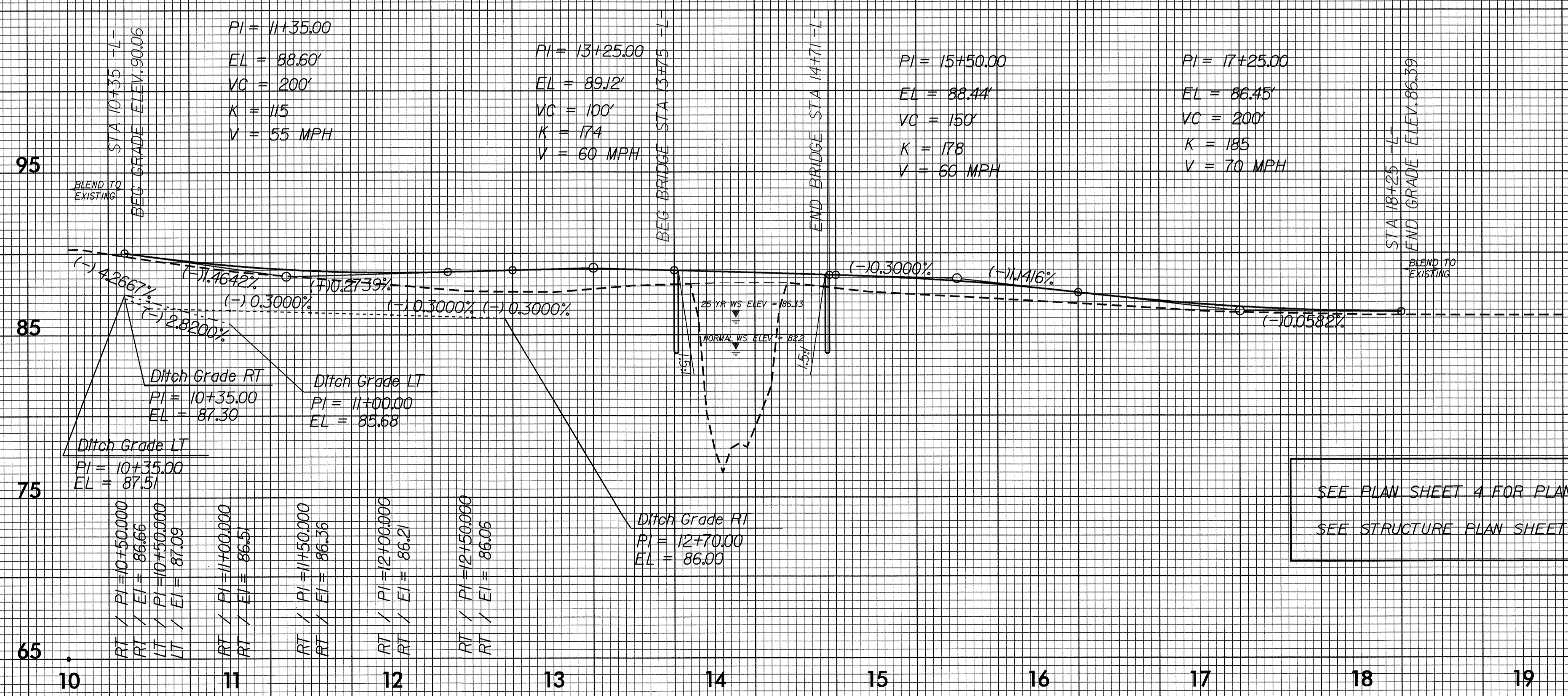
\*\*\*\*\*  
**BM1 ELEVATION = 97.96**  
 N 874900 E 2448702  
 L STATION 10+00  
 S 84° 25' 40.4" W Dist 318.79  
 RR SPIKE IN BASE OF 20" PINE  
 \*\*\*\*\*

\*\*\*\*\*  
**BM2 ELEVATION = 86.79**  
 N 874858 E 2449402  
 L STATION 13+87.38 RIGHT  
 RR SPIKE IN BASE OF 24" GUM  
 \*\*\*\*\*

\*\*\*\*\*  
**BM3 ELEVATION = 85.84**  
 N 874825 E 2449818  
 L STATION 18+04.34 RIGHT  
 BRIDGE SPIKE IN BASE OF TELEPHONE  
 PEDESTAL WITNESS POST  
 \*\*\*\*\*

**STRUCTURE HYDRAULIC DATA**

DESIGN DISCHARGE = 1290 CFS  
 DESIGN FREQUENCY = 25 YRS  
 DESIGN HW ELEVATION = 86.3 FT  
 BASE DISCHARGE = 3300 CFS  
 BASE FREQUENCY = 100 YRS  
 BASE HW ELEVATION = 87.3 FT  
 OVERTOPPING DISCHARGE = 1290 CFS  
 OVERTOPPING FREQUENCY = 25 YRS  
 OVERTOPPING ELEVATION = 86.3 FT



SEE PLAN SHEET 4 FOR PLAN VIEW  
 SEE STRUCTURE PLAN SHEETS S-1 THRU S-23