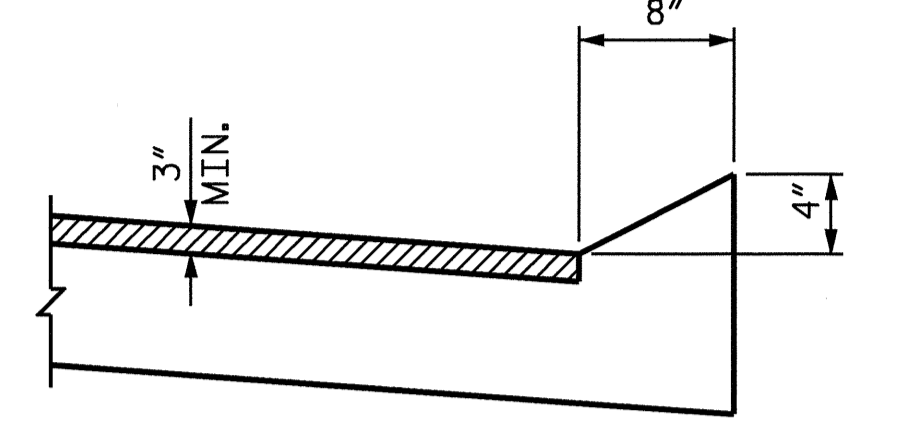
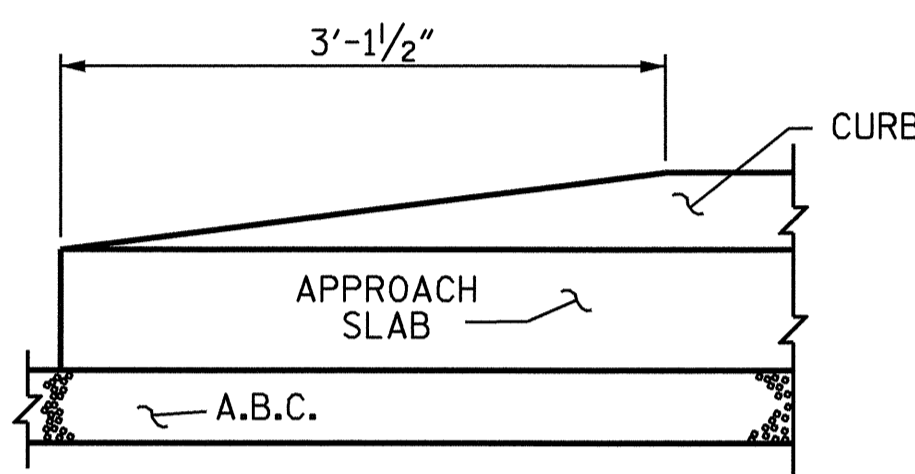


**BILL OF MATERIAL
FOR ONE APPROACH SLAB
(2 REQ'D)**

BAR NO.	NO.	SIZE	TYPE	LENGTH	WEIGHT	BAR NO.	NO.	SIZE	TYPE	LENGTH	WEIGHT	BAR NO.	NO.	SIZE	TYPE	LENGTH	WEIGHT	BAR NO.	NO.	SIZE	TYPE	LENGTH	WEIGHT
*A1	49	#5	STR	35'-4"	1806	*B3	14	#5	STR	11'-6"	168	*B132	2	#6	STR	39'-3"	118	B231	2	#8	STR	39'-4"	210
*A100	2	#5	STR	33'-5"	70	B4	1	#5	3	6'-7"	7	*B133	2	#6	STR	39'-9"	119	B232	2	#8	STR	39'-9"	212
*A101	2	#5	STR	31'-4"	65	B5	1	#5	3	6'-2"	6	*B134	2	#6	STR	40'-2"	121	B233	2	#8	STR	40'-3"	215
*A102	2	#5	STR	29'-2"	61							*B135	1	#6	STR	40'-9"	61	B234	2	#8	STR	40'-8"	217
*A103	2	#5	STR	27'-0"	56	*B100	2	#6	STR	24'-4"	73							B235	1	#8	STR	41'-2"	110
*A104	2	#5	STR	24'-10"	52	*B101	2	#6	STR	24'-11"	75	B200	2	#8	STR	24'-10"	133						
*A105	2	#5	STR	22'-11"	48	*B102	2	#6	STR	25'-4"	76	B201	2	#8	STR	25'-4"	135						
*A106	2	#5	STR	20'-9"	43	*B103	2	#6	STR	25'-10"	78	B202	2	#8	STR	25'-9"	138						
*A107	2	#5	STR	18'-7"	39	*B104	2	#6	STR	26'-3"	79	B203	2	#8	STR	26'-3"	140						
*A108	2	#5	STR	16'-6"	34	*B105	2	#6	STR	26'-8"	80	B204	2	#8	STR	26'-9"	143						
*A109	2	#5	STR	14'-4"	30	*B106	2	#6	STR	27'-2"	82	B205	2	#8	STR	27'-2"	145						
*A110	2	#5	STR	12'-2"	25	*B107	2	#6	STR	27'-7"	83	B206	2	#8	STR	27'-8"	148						
*A111	2	#5	STR	10'-0"	21	*B108	2	#6	STR	28'-2"	85	B207	2	#8	STR	28'-1"	150						
*A112	2	#5	STR	7'-11"	17	*B109	2	#6	STR	28'-8"	86	B208	2	#8	STR	28'-7"	153						
*A113	2	#5	STR	5'-9"	12	*B110	2	#6	STR	29'-0"	87	B209	2	#8	STR	29'-1"	155						
*A114	2	#5	STR	3'-7"	7	*B111	2	#6	STR	29'-6"	89	B210	2	#8	STR	29'-6"	158						
*A115	1	#5	STR	2'-6"	3	*B112	2	#6	STR	29'-11"	90	B211	2	#8	STR	30'-0"	160						
						*B113	2	#6	STR	30'-5"	91	B212	2	#8	STR	30'-5"	162						
A2	100	#4	STR	18'-7"	1241	*B114	2	#6	STR	30'-11"	93	B213	2	#8	STR	30'-11"	165						
A200	4	#4	STR	17'-7"	47	*B115	2	#6	STR	31'-4"	94	B214	2	#8	STR	31'-4"	167						
A201	4	#4	STR	16'-7"	44	*B116	2	#6	STR	31'-10"	96	B215	2	#8	STR	31'-10"	170						
A202	2	#4	STR	29'-2"	39	*B117	2	#6	STR	32'-3"	97	B216	2	#8	STR	32'-4"	173						
A203	2	#4	STR	27'-0"	36	*B118	2	#6	STR	32'-9"	98	B217	2	#8	STR	32'-9"	175						
A204	2	#4	STR	24'-10"	33	*B119	2	#6	STR	33'-4"	100	B218	2	#8	STR	33'-3"	178						
A205	2	#4	STR	22'-11"	31	*B120	2	#6	STR	33'-9"	101	B219	2	#8	STR	33'-9"	180						
A206	2	#4	STR	20'-9"	28	*B121	2	#6	STR	34'-2"	103	B220	2	#8	STR	34'-2"	182						
A207	2	#4	STR	18'-7"	25	*B122	2	#6	STR	34'-7"	104	B221	2	#8	STR	34'-8"	185						
A208	2	#4	STR	16'-6"	22	*B123	2	#6	STR	35'-1"	105	B222	2	#8	STR	35'-1"	187						
A209	2	#4	STR	14'-4"	19	*B124	2	#6	STR	35'-6"	107	B223	2	#8	STR	35'-7"	190						
A210	2	#4	STR	12'-2"	16	*B125	2	#6	STR	36'-0"	108	B224	2	#8	STR	36'-0"	192						
A211	2	#4	STR	10'-0"	13	*B126	2	#6	STR	36'-6"	110	B225	2	#8	STR	36'-6"	195						
A212	2	#4	STR	7'-11"	11	*B127	2	#6	STR	36'-11"	111	B226	2	#8	STR	37'-0"	198						
A213	2	#4	STR	5'-9"	8	*B128	2	#6	STR	37'-5"	112	B227	2	#8	STR	37'-5"	200						
A214	2	#4	STR	3'-7"	5	*B129	2	#6	STR	37'-11"	114	B228	2	#8	STR	37'-11"	202						
A215	1	#4	STR	2'-6"	2	*B130	2	#6	STR	38'-5"	115	B229	2	#8	STR	38'-4"	205						
						*B131	2	#6	STR	38'-10"	117	B230	2	#8	STR	38'-10"	207						

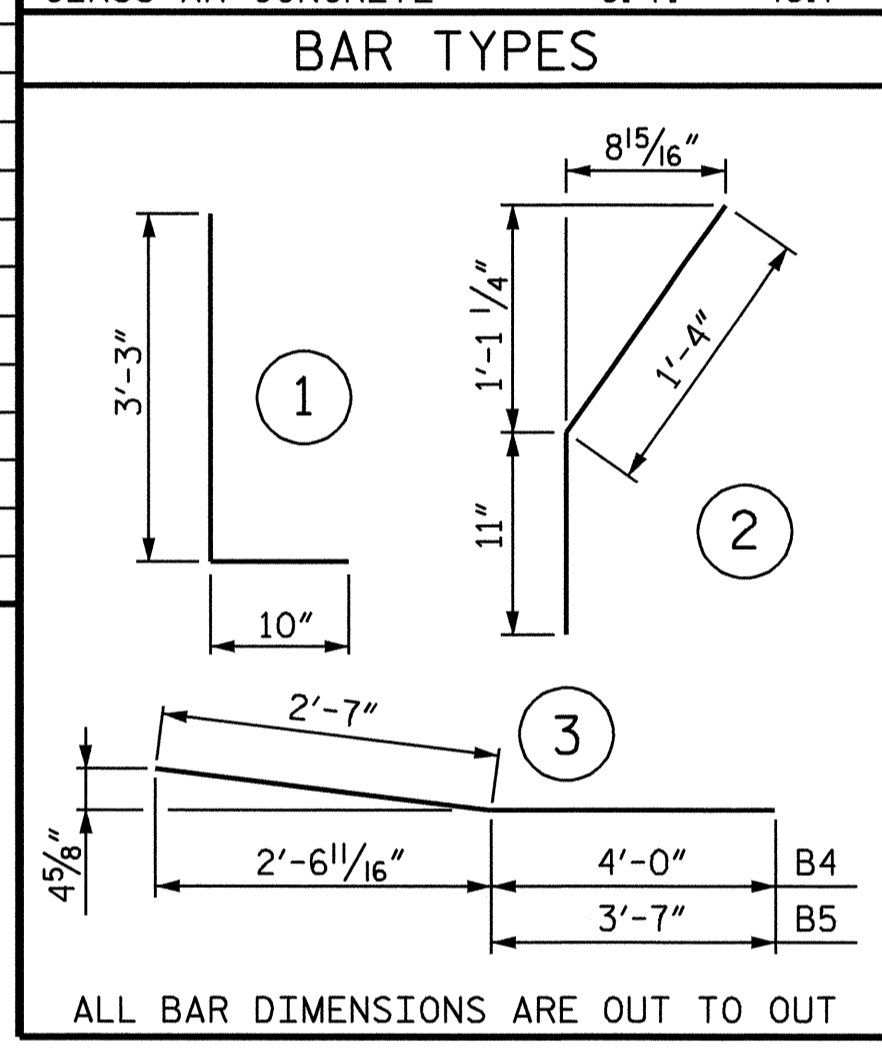


SECTION N-N

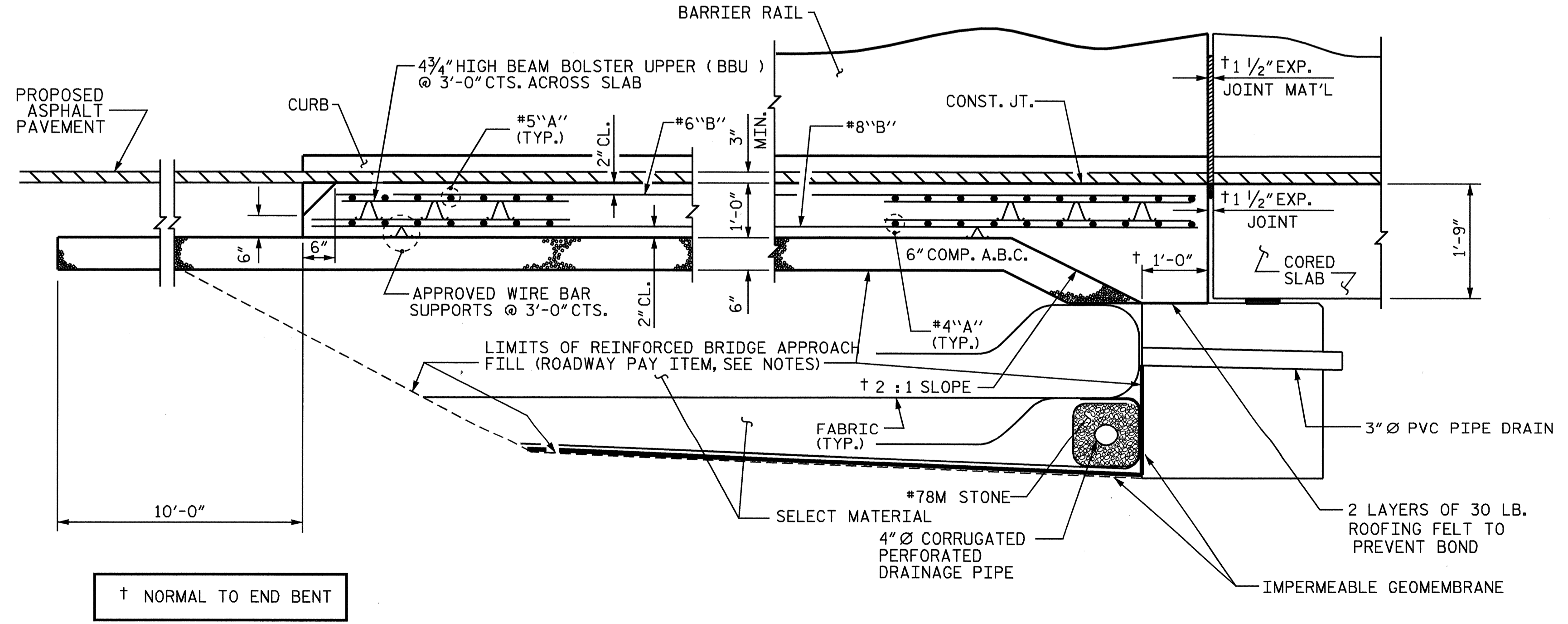


END OF CURB WITHOUT
SHOULDER BERM GUTTER

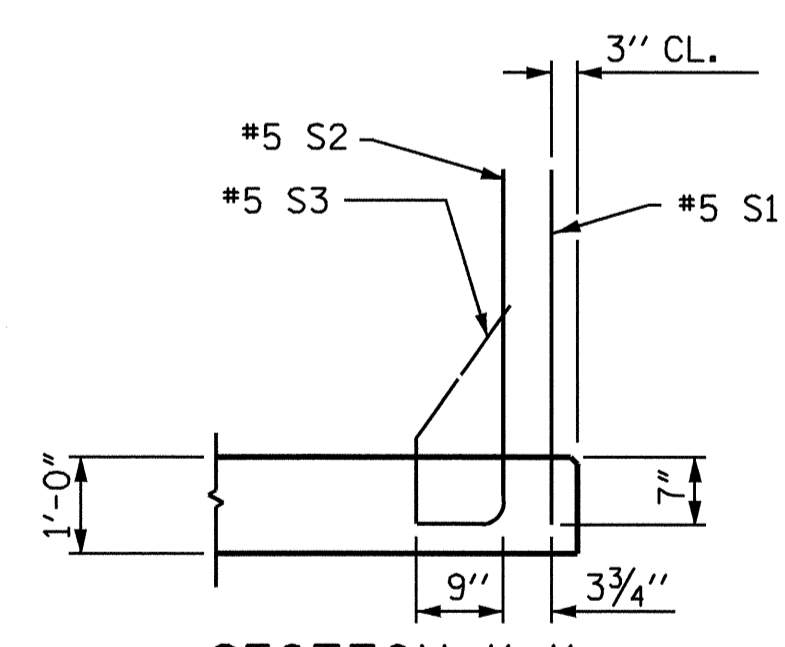
CURB DETAILS



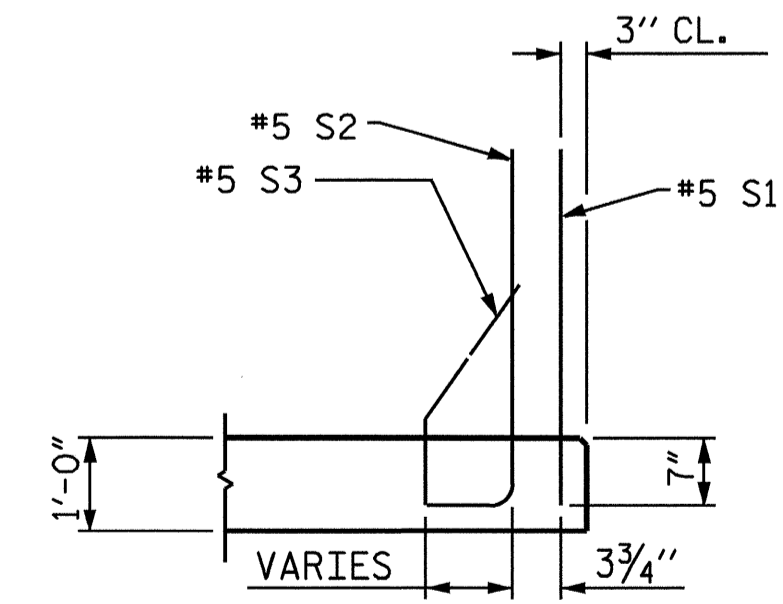
ALL BAR DIMENSIONS ARE OUT TO OUT



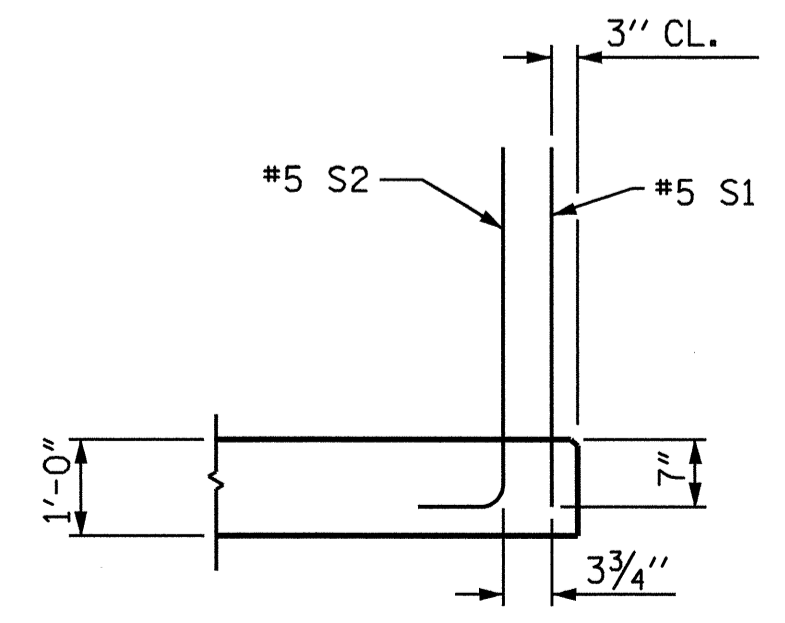
SECTION THRU SLAB



SECTION K-K



SECTION L-L



SECTION M-M

NOTES

THE COST OF THE BARRIER RAIL ON THE APPROACH SLAB SHALL BE INCLUDED IN THE LUMP SUM CONTRACT PRICE BID FOR BRIDGE APPROACH SLABS.

FOR REINFORCED BRIDGE APPROACH FILL INCLUDING FABRIC, IMPERMEABLE GEOMEMBRANE, 4" Ø DRAINAGE PIPE, #78M STONE, AND SELECT MATERIAL, SEE ROADWAY PLANS.

TEMPORARY DRAINAGE AND TEMPORARY BERM AND SLOPE DRAINS WILL BE PAID FOR UNDER THE LUMP SUM PRICE FOR BRIDGE APPROACH SLAB.

AREA BETWEEN THE WINGWALL AND APPROACH SLAB SHALL BE GRADED TO DRAIN THE WATER AWAY FROM THE FILL FACE OF THE BRIDGE AND SHALL BE PAVED. SEE ROADWAY PLANS.

THE 6" COMP. A.B.C. SHALL EXTEND 10'-0" BEYOND THE END OF THE APPROACH SLAB AND 1'-0" OUTSIDE OF EACH EDGE OF SLAB.

REINFORCING STEEL LBS. 8282
*EPOXY COATED REINFORCING STEEL LBS. 6015

CLASS AA CONCRETE BREAKDOWN		
POUR 1 SLAB	C. Y.	46.3
POUR 2 RAIL	C. Y.	2.4
CLASS AA CONCRETE	C. Y.	48.7

THE CONTRACTOR MAY USE 4" TYPE HB ASPHALT CONCRETE BASE COURSE IN LIEU OF 6" COMP. A.B.C. IF THIS OPTION IS USED, THE BASE COURSE SHALL EXTEND 1'-0" BEYOND THE END OF THE APPROACH SLAB AND THE WIDTH SHALL BE THE SAME AS THAT OF THE APPROACH SLAB.

THE CONTRACTOR MAY USE 5" CLASS 'A' CONCRETE BASE IN LIEU OF 6" COMP. A.B.C. IF THIS OPTION IS USED, THE CONCRETE BASE SHALL EXTEND 1'-0" BEYOND THE END OF THE APPROACH SLAB AND THE WIDTH SHALL BE THE SAME AS THAT OF THE APPROACH SLAB. THE CONCRETE SHALL BE FINISHED TO A SMOOTH SURFACE AND A LAYER OF 30 LB ROOFING FELT SHALL BE PLACED BETWEEN THE CONCRETE BASE AND THE APPROACH SLAB TO PREVENT BOND. THE APPROACH SLAB SHALL NOT BE CAST UNTIL THE CONCRETE BASE HAS REACHED AN AGE OF THREE CURING DAYS.

FOR JOINT SEAL DETAILS, SEE "PRESTRESSED CONCRETE CORED SLAB UNIT" SHEETS.

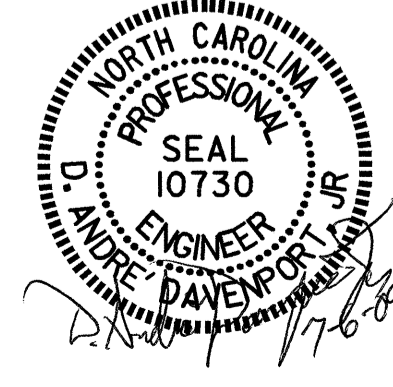
THE JOINT AT THE END BENT SHALL BE SEALED AS SOON AS PRACTICAL AFTER THE CONSTRUCTION OF THE APPROACH SLABS.

APPROACH SLAB GROOVING IS NOT REQUIRED.

PROJECT NO. B-4134
HALIFAX COUNTY
STATION: 14+23.00 -L-

SHEET 1 OF 4

STATE OF NORTH CAROLINA
DEPARTMENT OF TRANSPORTATION
RALEIGH
**STANDARD
BRIDGE APPROACH SLAB
FOR PRESTRESSED
CONCRETE CORED SLAB
WITH BARRIER RAIL**



REVISIONS					TOTAL SHEETS
NO.	BY:	DATE:	NO.	BY:	DATE:
1			3		
2			4		

SHEET NO. S-20
TOTAL SHEETS 23

ASSEMBLED BY :	D.A. DAVENPORT	DATE :	5-04
CHECKED BY :	H.T. BARBOUR	DATE :	6-04
DRAWN BY :	LES 8/01	REV. 10/17/00	RWW/LES
CHECKED BY :	RDR 8/01	REV. 7/10/01	LES/RDR
		REV. 5/7/03	RWW/JTE