

CROWDERS MOUNTAIN TOWNSHIP  
 GASTONIA CORPORATE LIMITS (PB 39 PG 6)  
 (70,104 (230') OFFSET FROM CENTERLINE NC-274)

ALL WATER LINES AND SANITARY  
 SEWER LINES OWNED BY THE  
 CITY OF GASTONIA

PROJECT REFERENCE NO. U-2408	SHEET NO. UC-3
UTILITY CONSTRUCTION	

PROP. 1 - RELOCATE EXISTING  
 FIRE HYDRANT  
 11M OF 150MM DI WATER PIPE,  
 CLASS 51, 2.41 MPA WP  
 1 - 150MM GATE VALVE & VALVE BOX,  
 1.38 MPA WP  
 CONNECT USING NECESSARY FITTINGS

PROP. 16M - FILL OR  
 REMOVE ABANDONED  
 200MM PIPE, CI WATER

PROP. 12M - FILL OR  
 REMOVE ABANDONED  
 150MM PIPE, PVC FORCE MAIN

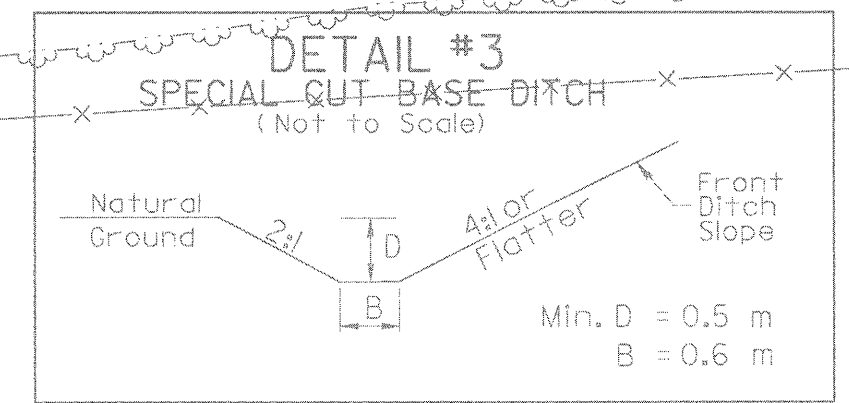
PROP. 12M OF 150MM PVC FORCE MAIN  
 SEWER PIPE, (C900), DR 18, 1.03 MPA WP  
 2 - 150MM 22 1/2° DI BENDS  
 2 - 150MM 45° DI BENDS  
 CONNECT USING NECESSARY FITTINGS

PROP. 1 - RELOCATE EXISTING  
 WATER METER  
 15M OF 20MM COPPER WATER PIPE,  
 TYPE K  
 1 - 300MM X 20MM TAPPING SADDLE  
 1 - 20MM CORPORATION STOP  
 CONNECT USING NECESSARY FITTINGS

PROP. 1 - RELOCATE EXISTING  
 FIRE HYDRANT  
 3M OF 150MM DI WATER PIPE,  
 CLASS 51, 2.41 MPA WP  
 1 - 200MM X 150MM DI TEE  
 1 - 150MM GATE VALVE & VALVE BOX,  
 1.38 MPA WP  
 CONNECT USING NECESSARY FITTINGS

PROP. 16M OF 200MM DI WATER PIPE,  
 CLASS 51, 2.41 MPA WP  
 4 - 200MM 22 1/2° DI BENDS  
 CONNECT USING NECESSARY FITTINGS

PROP. 6M OF 200MM DI SEWER PIPE,  
 CLASS 51. MATCH EXISTING SLOPE.  
 2 - 200MM TRANSITION COUPLINGS  
 (DI TO TC)

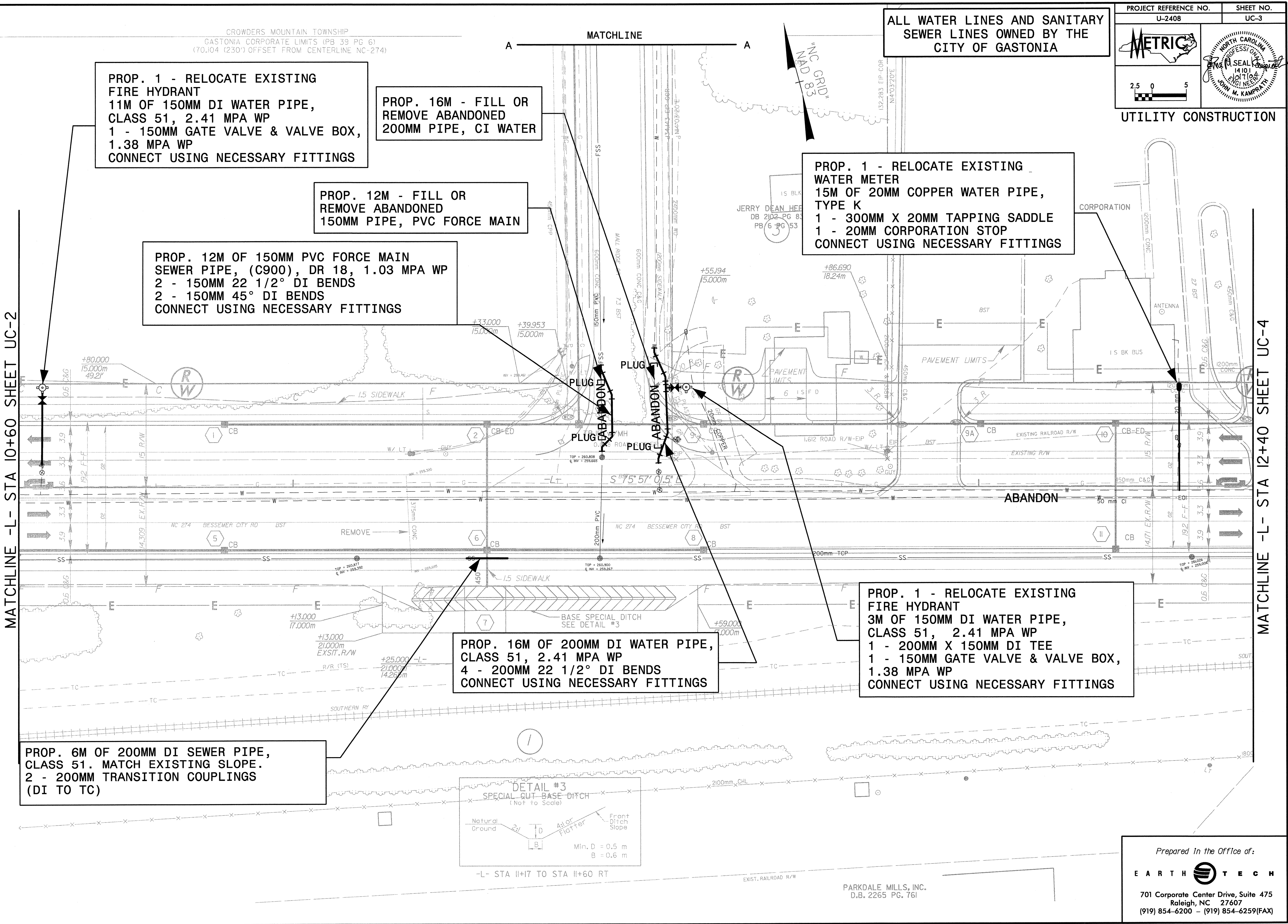


MATCHLINE -L- STA 10+60 SHEET UC-2

MATCHLINE -L- STA 12+40 SHEET UC-4

A MATCHLINE A

"NC GRID"  
 NAD 83



G:\76845\crowdway\Drawings\U2408\UC03.dwg  
 10/07/2004 14:43:37 MW

PARKDALE MILLS, INC.  
 D.B. 2265 PG. 761

Prepared In the Office of:  
**EARTH TECH**  
 701 Corporate Center Drive, Suite 475  
 Raleigh, NC 27607  
 (919) 854-6200 - (919) 854-6259(FAX)