

ALL WATER LINES AND SANITARY SEWER LINES OWNED BY THE CITY OF GASTONIA

SEE PROFILE FOR LINE B ON SHEET UC-29

PROP. 1 - RELOCATE EXISTING WATER METER
18M OF 20MM COPPER WATER PIPE, TYPE K
1 - 300MM X 20MM TAPPING SADDLE
1 - 20MM CORPORATION STOP
CONNECT USING NECESSARY FITTINGS

PROP. 1200MM MANHOLE B2, STA. 0+09.29, LINE B

11.29 M LT. OF -L- STA. 23+67.41

PROP. 9.29M OF 200MM DI SEWER PIPE, CLASS 51

PROP. 1 - BREAK DOWN & REBUILD EXISTING MANHOLE B1 STA. 0+00.00, LINE B

11.25 M LT. OF -L- STA. 23+58.01
EX. TOP EL. 254.333
NEW TOP EL. 255.699

PROP. 1 - RELOCATE EXISTING FIRE HYDRANT
10M OF 150MM DI WATER PIPE, CLASS 51, 2.41 MPA WP
1 - 150MM GATE VALVE & VALVE BOX, 1.38 MPA WP
CONNECT USING NECESSARY FITTINGS

PROP. 2 - RELOCATE EXISTING WATER METERS
42M OF 25MM COPPER WATER PIPE, TYPE K
2 - 300MM X 25MM TAPPING SADDLES
2 - 25MM CORPORATION STOPS
CONNECT USING NECESSARY FITTINGS

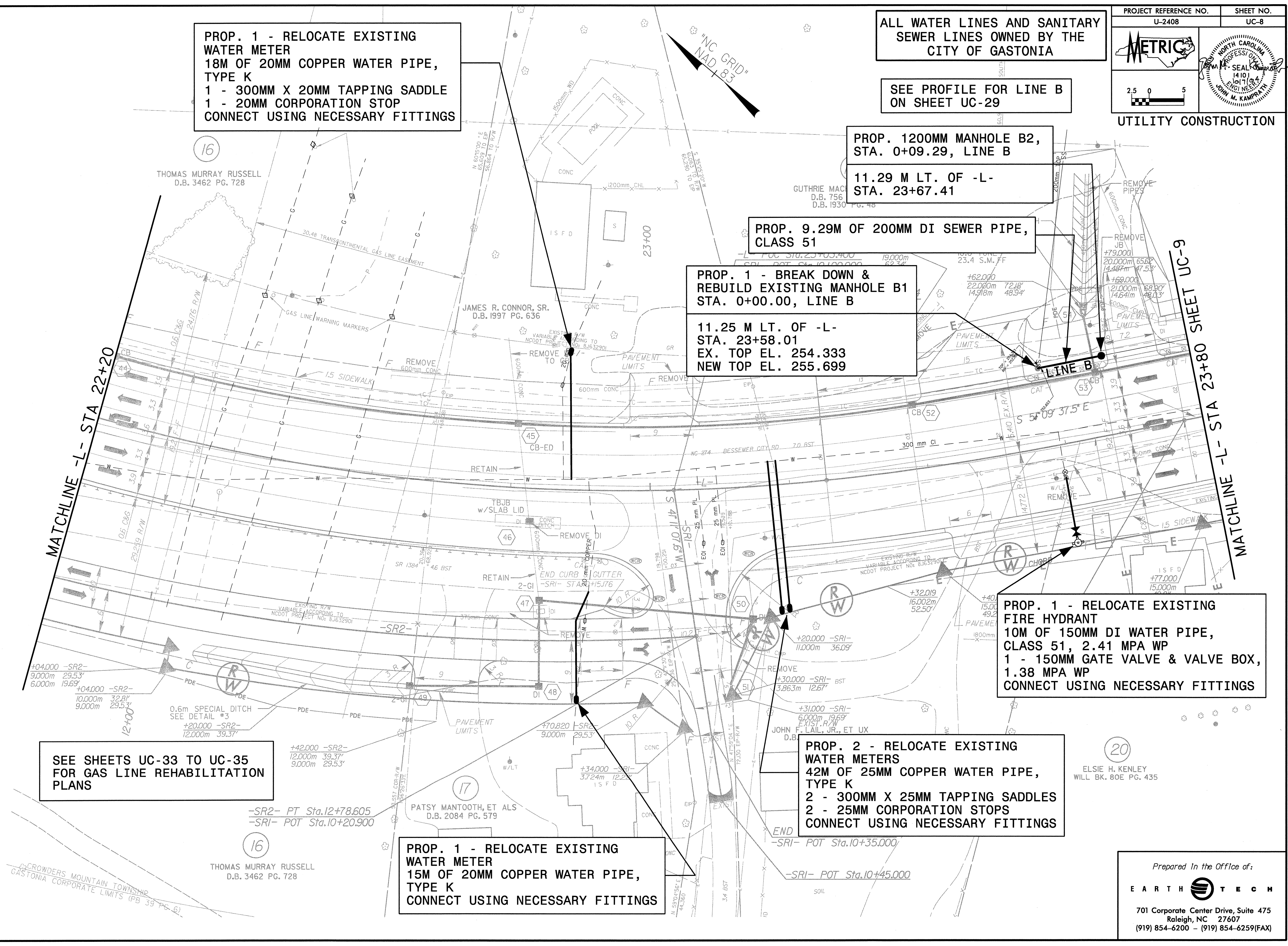
PROP. 1 - RELOCATE EXISTING WATER METER
15M OF 20MM COPPER WATER PIPE, TYPE K
CONNECT USING NECESSARY FITTINGS

SEE SHEETS UC-33 TO UC-35 FOR GAS LINE REHABILITATION PLANS

MATCHLINE -L- STA 22+20

MATCHLINE -L- STA 23+80 SHEET UC-9

"NC GRID" NAD 83



G:\75945\codway\pfs\2408\2408uc08.dwg 11/24/24 AM