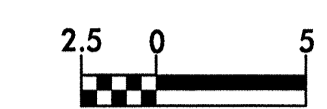
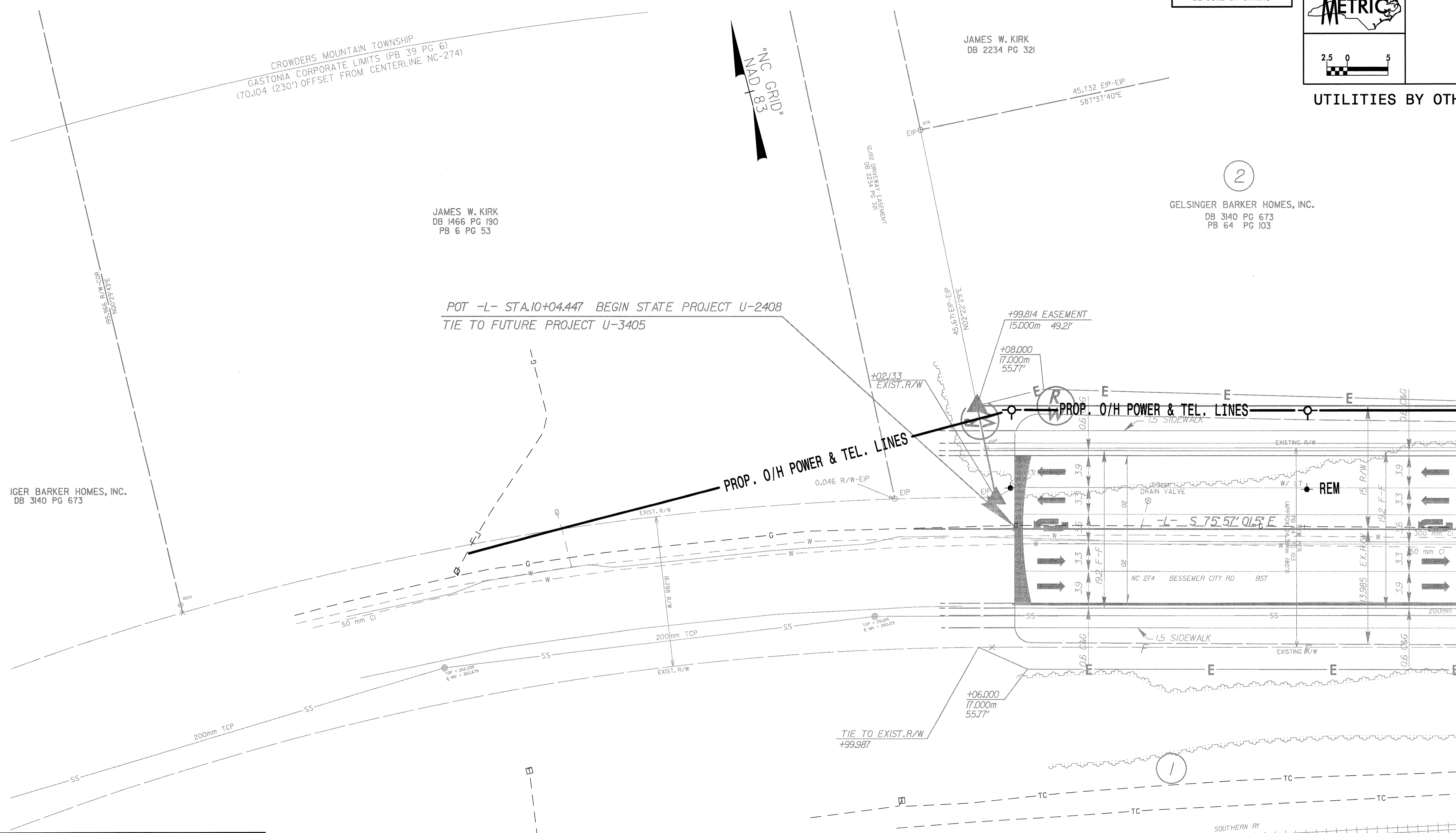


NOTE:
ALL PROPOSED UTILITY WORK
SHOWN ON THIS SHEET WILL
BE DONE BY OTHERS



UTILITIES BY OTHERS



POT -L- STA.10+04.447 BEGIN STATE PROJECT U-2408
TIE TO FUTURE PROJECT U-3405

PROP. O/H POWER & TEL. LINES

PROP. O/H POWER & TEL. LINES

IGER BARKER HOMES, INC.
DB 3140 PG 673

JAMES W. KIRK
DB 1466 PG 190
PB 6 PG 53

JAMES W. KIRK
DB 2234 PG 321

GELSINGER BARKER HOMES, INC.
DB 3140 PG 673
PB 64 PG 103

DATUM DESCRIPTION

THE LOCALIZED COORDINATE SYSTEM DEVELOPED FOR THIS PROJECT IS BASED ON THE STATE PLANE COORDINATES ESTABLISHED BY NCDOT FOR MONUMENT "U2408-4" WITH NAD 83 STATE PLANE GRID COORDINATES OF NORTHING: 1716607981(m) EASTING: 4067392401(m) THE AVERAGE COMBINED GRID FACTOR USED ON THIS PROJECT (GROUND TO GRID) IS: 0.999838033 THE N.C. LAMBERT GRID BEARING AND LOCALIZED HORIZONTAL GROUND DISTANCE FROM "U2408-4" TO -L- STATION 10+04.447 IS 2,117.706m BEARING N 50° 28' 54.3" W ALL LINEAR DIMENSIONS ARE LOCALIZED HORIZONTAL DISTANCES VERTICAL DATUM USED IS NGVD 29

GASTONIA CORPORATE LIMITS (PB 39 PG 6)
(LIMITS = CENTERLINE OF EXISTING TRACK)
CROWDERS MOUNTAIN TOWNSHIP

NOTE:
PROPOSED POWER LINES FROM STA. 10+00 TO STA.29+00
ARE BY DUKE ENERGY

Prepared In the Office of:



701 Corporate Center Drive, Suite 475
Raleigh, NC 27607
(919) 854-6200 - (919) 854-6259(FAX)

s:\76845\roadway\proj\U2408\uo02.dwg 07/17/2004 10:03:02 AM

MATCHLINE -L- STA 10+60 SHEET UO-3