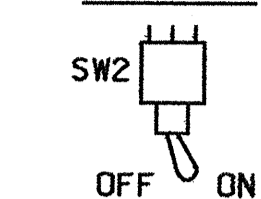


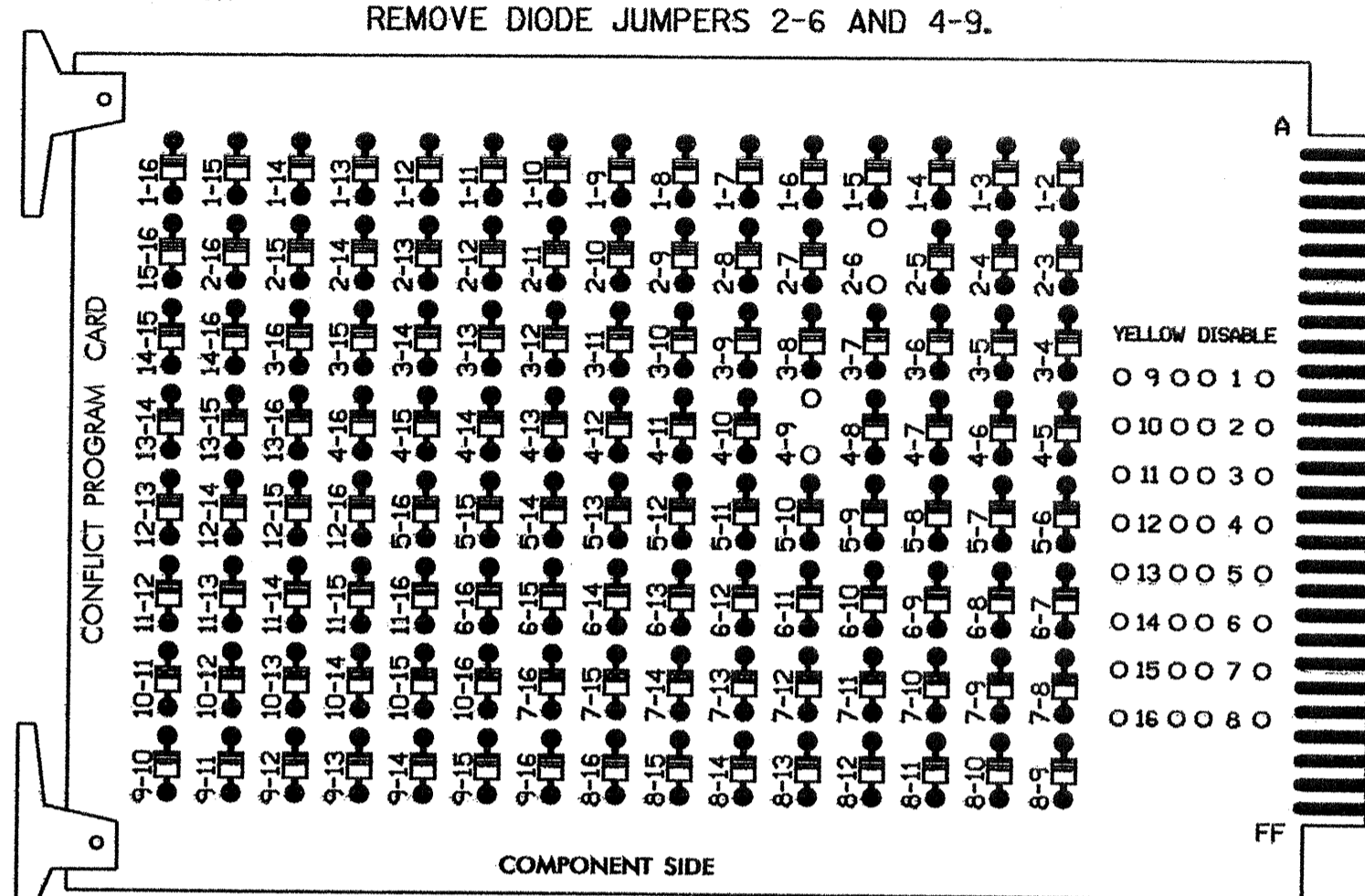
EDI MODEL 2010ECL CONFLICT MONITOR

PROGRAMMING DETAIL

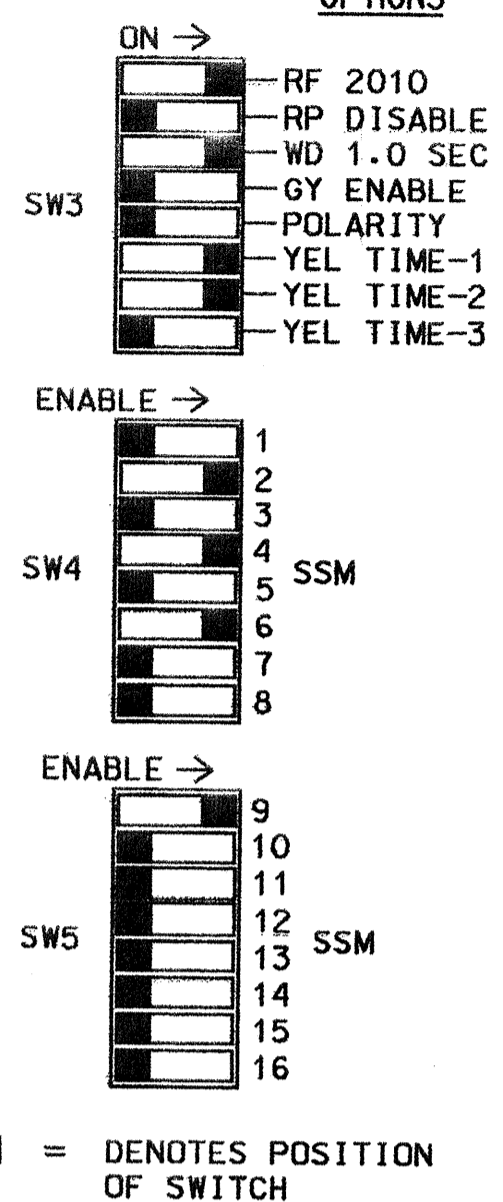
WD ENABLE



(remove jumpers and set switches as shown)



OPTIONS



NOTES:

- CARD IS PROVIDED WITH ALL DIODE JUMPERS IN PLACE. REMOVAL OF ANY JUMPER ALLOWS ITS CHANNELS TO RUN CONCURRENTLY.
- MAKE SURE JUMPERS SEL1-SEL5 ARE PRESENT ON THE MONITOR BOARD.

NOTES

- TO PREVENT "FLASH-CONFLICT" PROBLEMS, INSERT RED FLASH PROGRAM BLOCKS FOR ALL UNUSED VEHICLE LOAD SWITCHES IN THE OUTPUT FILE. THE INSTALLER SHALL VERIFY THAT SIGNAL HEADS FLASH IN ACCORDANCE WITH THE SIGNAL PLANS.
- ENSURE THAT RED ENABLE IS ACTIVE AT ALL TIMES DURING NORMAL OPERATION. TO PREVENT RED FAILURES ON UNUSED MONITOR CHANNELS, TIE UNUSED RED MONITOR INPUTS 1,3,5, 7,8,10,11,12,13,14,15 & 16 TO LOAD SWITCH AC+ PER THE CABINET MANUFACTURER'S INSTRUCTIONS.
- PROGRAM CONTROLLER TO START UP IN PHASES 2 AND 6 GREEN.
- ENABLE SIMULTANEOUS GAP-OUT FEATURE, ON CONTROLLER UNIT, FOR ALL PHASES.

EQUIPMENT INFORMATION

CONTROLLER.....CONTRACTOR SUPPLIED 2070L
 CABINETCONTRACTOR SUPPLIED 332
 SOFTWAREECONOLITE OASIS 3.00.81
 CABINET MOUNT.....BASE
 OUTPUT FILE POSITIONS...18 (12-STD, 6-AUX)
 LOAD SWITCHES USED.....S2,S4,S6,S9
 PHASES USED.....2,4,6
 OVERLAP A:.....4

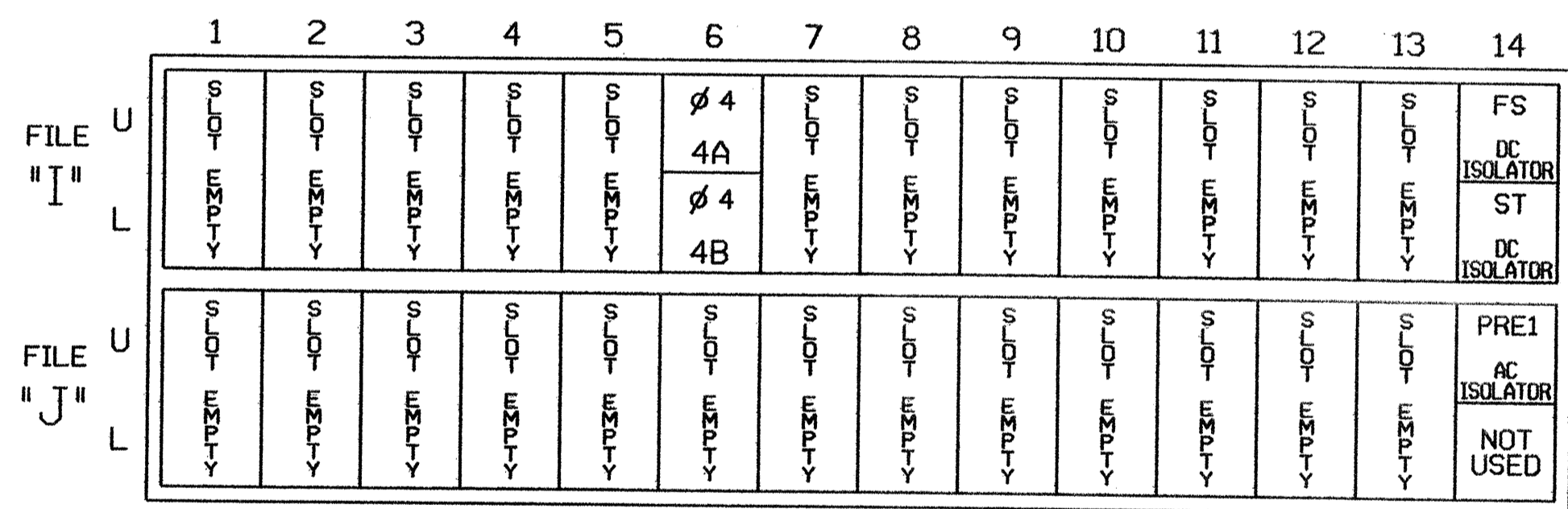
FIELD CONNECTION HOOK-UP CHART

LOAD SWITCH NO.	S1	S2	S2P	S3	S4	S4P	S5	S6	S6P	S7	S8	S8P	S9	S10	S11	S12	S13	S14
PHASE	1	2	2 PED	3	4	4 PED	5	6	6 PED	7	8	8 PED	OLA	OLB	SPARE	OLC	OLD	SPARE
SIGNAL HEAD NO.	NU	21,22	NU	NU	41,42	NU	NU	61,62	NU	NU	NU	NU	62	NU	NU	NU	NU	NU
GREEN		130			103			136										
YELLOW		129			102			135										
RED		128			101			134					*					
RED ARROW																		
YELLOW ARROW													A122					
GREEN ARROW													A123					

NU = NOT USED
 * DENOTES INSTALL LOAD RESISTOR. SEE LOAD RESISTOR INSTALLATION DETAIL THIS PAGE.

INPUT FILE POSITION LAYOUT

(front view)



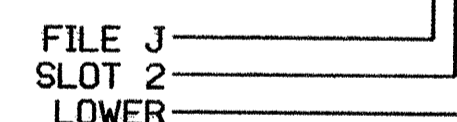
EX.: 1A, 2A, ETC. = LOOP NO.'S

FS = FLASH SENSE
 ST = STOP TIME
 PRE = PREEMPT

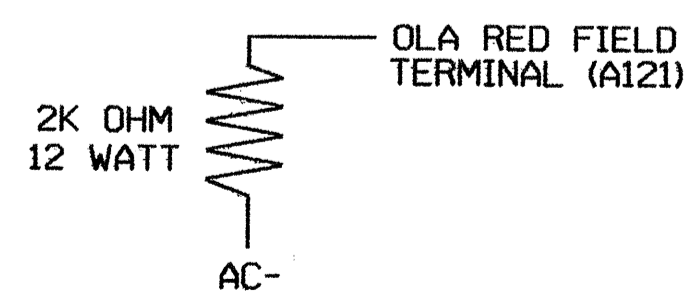
INPUT FILE CONNECTION & PROGRAMMING CHART

LOOP NO.	LOOP TERMINAL	INPUT FILE POS.	PIN NO.	INPUT ASSIGNMENT NO.	DETECTOR NO.	NEMA PHASE	CALL	EXTEND	FULL TIME DELAY	STRETCH TIME	DELAY TIME
4A	TB4-9,10	I6U	41	3	4	4	Y	Y			3
4B	TB4-11,12	I6L	45	7	14	4	Y	Y			10

INPUT FILE POSITION LEGEND: J2L



LOAD RESISTOR INSTALLATION DETAIL



NOTE: THE PURPOSE OF THIS RESISTOR IS TO LOAD THE CHANNEL RED MONITOR INPUT IN ORDER FOR THE SIGNAL SEQUENCE MONITOR TO USE THE FULL SIGNAL SEQUENCE MONITORING CAPABILITY ON CHANNELS THAT DO NOT USE THE RED DISPLAY IN THE FIELD.

SIGNAL UPGRADE - TEMPORARY DESIGN 2 - SHEET 1 OF 2

ELECTRICAL AND PROGRAMMING DETAILS FOR:

NC 274 (BESSEMER CITY ROAD) AT SR 1338 (NORTHWEST BLVD.)

Prepared in the Office of:

122 N. McDowell St., Raleigh, NC 27603

DIVISION 12 GASTON COUNTY GASTONIA

PLAN DATE: JULY 2004 REVIEWED BY: T. J. [Signature]

PREPARED BY: WILLIAM HAIRSTON REVIEWED BY: [Signature]

REVISIONS: INIT. DATE

SEAL: NORTH CAROLINA PROFESSIONAL ENGINEER SEAL 022013 GEORGE C. BRUNY

Signature: [Signature] DATE: [Date]

SIG. INVENTORY NO. 12-0155T2

THIS ELECTRICAL DETAIL IS FOR THE SIGNAL DESIGN: 12-0155T2
 DESIGNED: 10/30/03
 SEALED: 08/09/04
 REVISED:

10-AUG-2004 16:09
 \\p1m1\1\0\9\ca\12108\120155_2004\xxxxx.dgn
 1/10/04