

CONST.REV.
R/W REV.

PROJECT REFERENCE NO. U-2408	SHEET NO. EC-3/CONST.4
R/W SHEET NO.	
ROADWAY DESIGN ENGINEER	HYDRAULICS ENGINEER

NOTE: PLACE TEMPORARY ROCK SEDIMENT DAMS TYPE-B AND TEMPORARY ROCK SILT CHECKS TYPE-A AT DRAINAGE OUTLETS.

2

GELSINGER BARKER HOMES, INC.
DB 3140 PG 673
PB 64 PG 103

CLEARING AND GRUBBING
EROSION CONTROL FOR
CONSTRUCTION SHEET 4

JAMES W. KIRK
DB 1466 PG 190
PB 6 PG 53

JAMES W. KIRK
DB 2234 PG 321

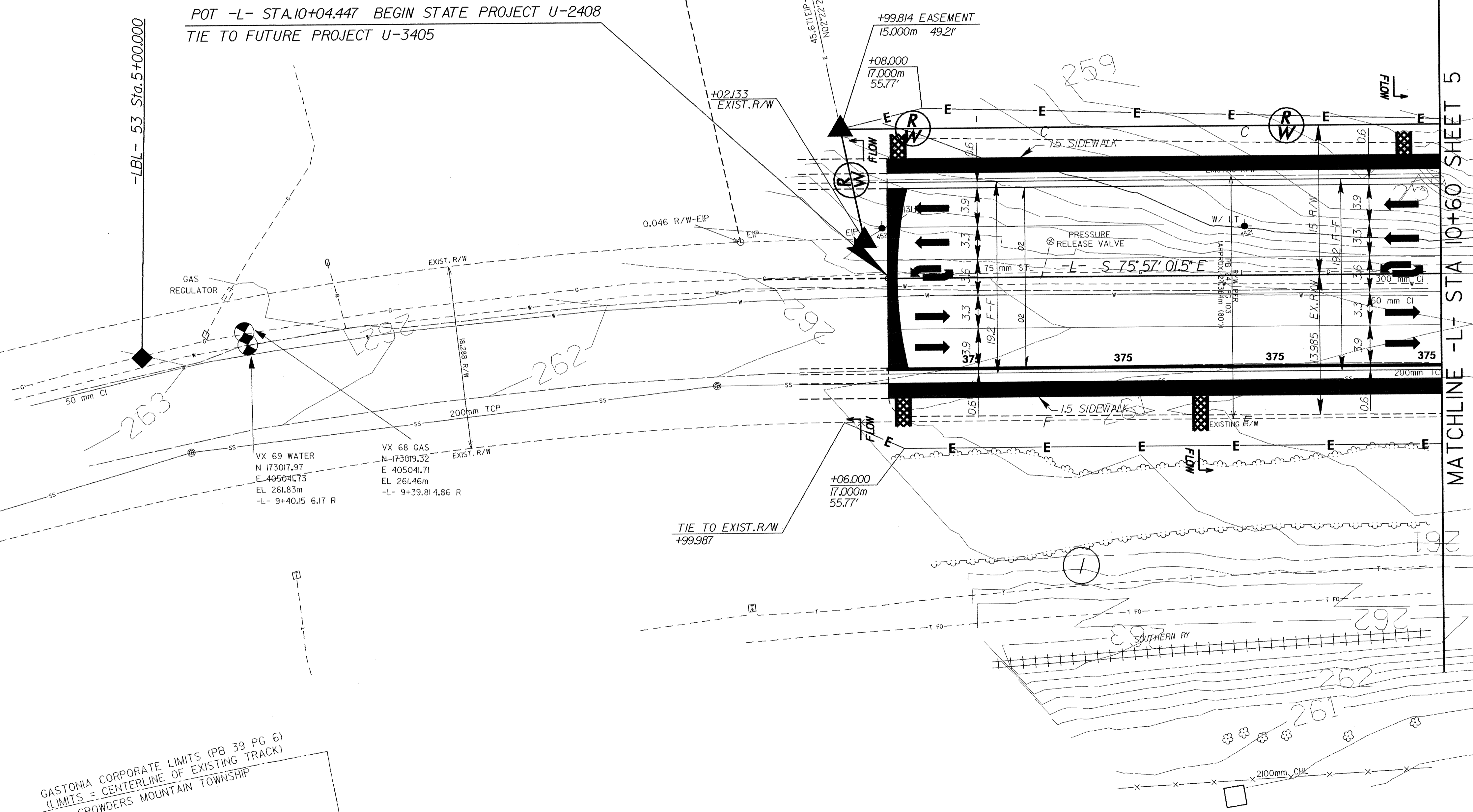
CROWDERS MOUNTAIN TOWNSHIP
GASTONIA CORPORATE LIMITS (PB 39 PG 6)
(70.104 (230') OFFSET FROM CENTERLINE NC-274)

"NC GRID"
NAD 83

POT -L- STA.10+04.447 BEGIN STATE PROJECT U-2408
TIE TO FUTURE PROJECT U-3405

-LBL- 53 Sta. 5+00.000

GELSINGER BARKER HOMES, INC.
DB 3140 PG 673



MATCHLINE -L- STA 10+60 SHEET 5

DATUM DESCRIPTION

THE LOCALIZED COORDINATE SYSTEM DEVELOPED FOR THIS PROJECT IS BASED ON THE STATE PLANE COORDINATES ESTABLISHED BY NCDOT FOR MONUMENT "U2408-4" WITH NAD 83 STATE PLANE GRID COORDINATES OF NORTHING: 1716607981(m) EASTING: 406739240(m) THE AVERAGE COMBINED GRID FACTOR USED ON THIS PROJECT (GROUND TO GRID) IS: 0.999838033 THE N.C. LAMBERT GRID BEARING AND LOCALIZED HORIZONTAL GROUND DISTANCE FROM "U2408-4" TO -L- STATION 10+04.447 IS 2,117.706m BEARING N 50° 28' 54.3" W ALL LINEAR DIMENSIONS ARE LOCALIZED HORIZONTAL DISTANCES VERTICAL DATUM USED IS NGVD 29

GASTONIA CORPORATE LIMITS (PB 39 PG 6)
LIMITS = CENTERLINE OF EXISTING TRACK
CROWDERS MOUNTAIN TOWNSHIP

FOR -L- PROFILE SEE SHEET 34