

2.5 0 5

CONST. REV.

R/W REV.

PROJECT REFERENCE NO. U-2408	SHEET NO. EC-4/CONST.5
R/W SHEET NO.	
ROADWAY DESIGN ENGINEER	HYDRAULICS ENGINEER

CROWDERS MOUNTAIN TOWNSHIP
GASTONIA CORPORATE LIMITS (PB 39 PG 6)
(70.104 (230') OFFSET FROM CENTERLINE NC-274)

NOTE:
PLACE TEMPORARY ROCK SEDIMENT DAMS TYPE-B
AND TEMPORARY ROCK SILT CHECKS TYPE-A AT
DRAINAGE OUTLETS.

**CLEARING AND GRUBBING
EROSION CONTROL FOR
CONSTRUCTION SHEET 5**

(2)
GELSINGER BARKER HOMES, INC.
DB 3140 PG 673
PB 64 PG 103

VX 67 GAS
N 172980.42
E 405219.97
EL 259.96m
-L- 11+22.18 0.68 L

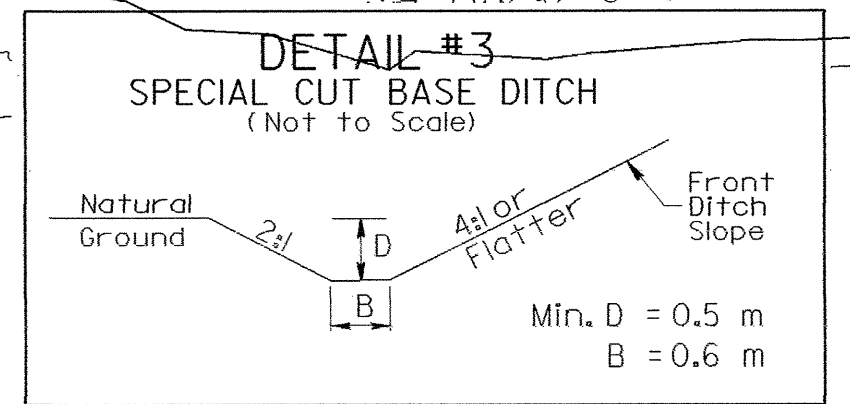
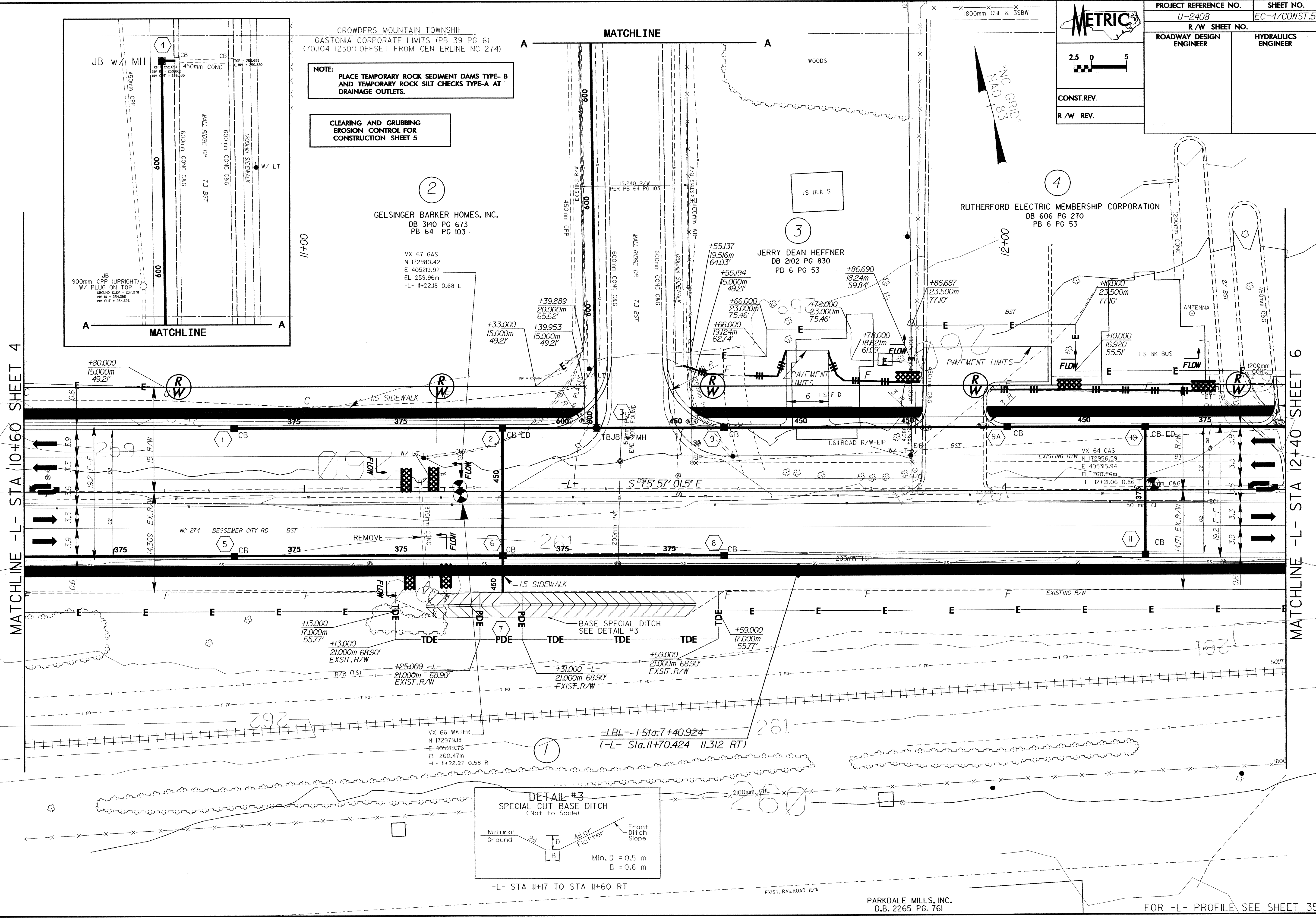
(3)
JERRY DEAN HEFFNER
DB 2102 PG 830
PB 6 PG 53

(4)
RUTHERFORD ELECTRIC MEMBERSHIP CORPORATION
DB 606 PG 270
PB 6 PG 53

VX 64 GAS
N 172956.59
E 405315.94
EL 260.26m
-L- 12+21.06 0.86 L

MATCHLINE -L- STA 10+60 SHEET 4

MATCHLINE -L- STA 12+40 SHEET 6



-L- STA 11+7 TO STA 11+60 RT

PARKDALE MILLS, INC.
D.B. 2265 PG. 761

FOR -L- PROFILE SEE SHEET 35