

**METRIC**

2.5 0 5

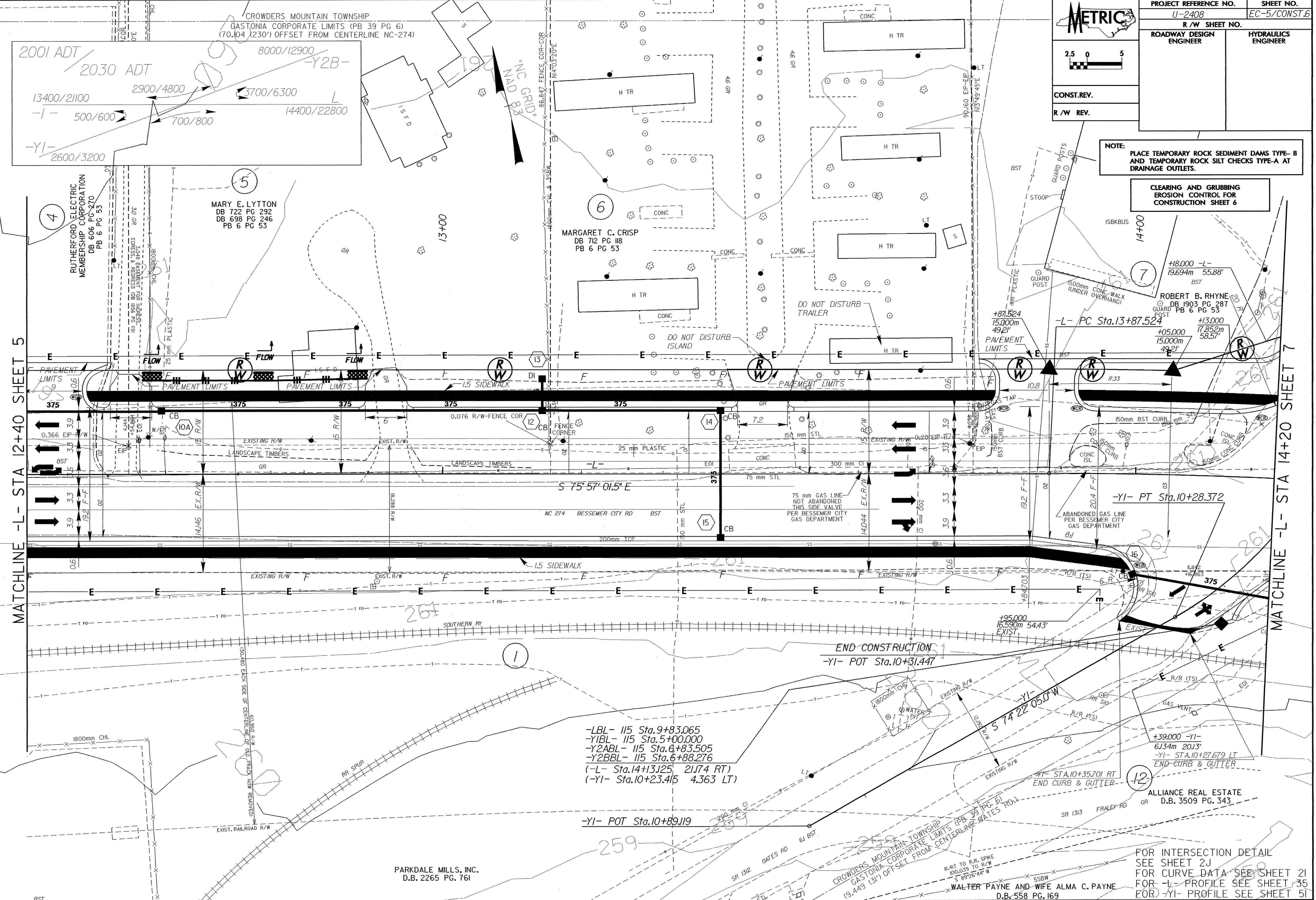
CONST. REV.

R/W REV.

PROJECT REFERENCE NO. U-2408	SHEET NO. EC-5/CONST.6
R/W SHEET NO.	
ROADWAY DESIGN ENGINEER	HYDRAULICS ENGINEER

**NOTE:**  
PLACE TEMPORARY ROCK SEDIMENT DAMS TYPE-B AND TEMPORARY ROCK SILT CHECKS TYPE-A AT DRAINAGE OUTLETS.

**CLEARING AND GRUBBING EROSION CONTROL FOR CONSTRUCTION SHEET 6**



MATCHLINE -L- STA 12+40 SHEET 5

MATCHLINE -L- STA 14+20 SHEET 7

- LBL- 115 Sta.9+83.065
- Y1BL- 115 Sta.5+00.000
- Y2ABL- 115 Sta.8+83.505
- Y2BBL- 115 Sta.6+88.276
- (-L- Sta.14+13.125 21.74 RT)
- (-Y1- Sta.10+23.415 4.363 LT)

-Y1- POT Sta.10+89.119

END CONSTRUCTION  
-Y1- POT Sta.10+31.447

+39.000 -Y1-  
6.134m 20.13'  
-Y1- STA.10+27.679 LT  
END CURB & GUTTER

ALLIANCE REAL ESTATE  
D.B. 3509 PG. 343

PARKDALE MILLS, INC.  
D.B. 2265 PG. 761

CROWDERS MOUNTAIN TOWNSHIP  
GASTONIA CORPORATE LIMITS (PB 39 PG 6)  
(9.449 (31') OFFSET FROM CENTERLINE)

WALTER PAYNE AND WIFE ALMA C. PAYNE  
D.B. 558 PG. 169

FOR INTERSECTION DETAIL  
SEE SHEET 2J  
FOR CURVE DATA SEE SHEET 2I  
FOR -L- PROFILE SEE SHEET 35  
FOR -Y1- PROFILE SEE SHEET 5I