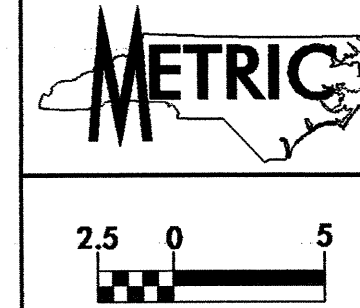


SOUTHERN BELL TELEPHONE AND TELEGRAPH CO.  
D.B. 1306-PC, 482

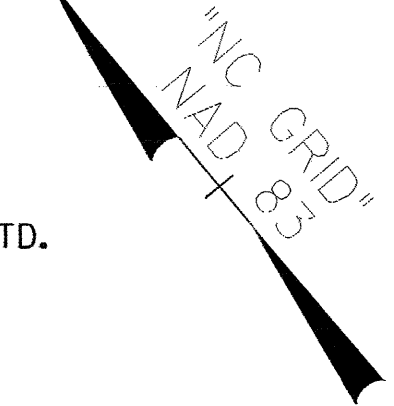
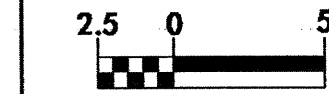
R.R. EASEMENT

2001 ADT  
2030 ADT

BEATY ENTERPRISES, LTD.  
D.B. 1270 PG. 347



PROJECT REFERENCE NO. U-2408	SHEET NO. EC-15/CONST.16
R/W SHEET NO.	
ROADWAY DESIGN ENGINEER	HYDRAULICS ENGINEER
CONST. REV.	
R/W REV.	



CLEARING AND GRUBBING  
EROSION CONTROL FOR  
CONSTRUCTION SHEET 16

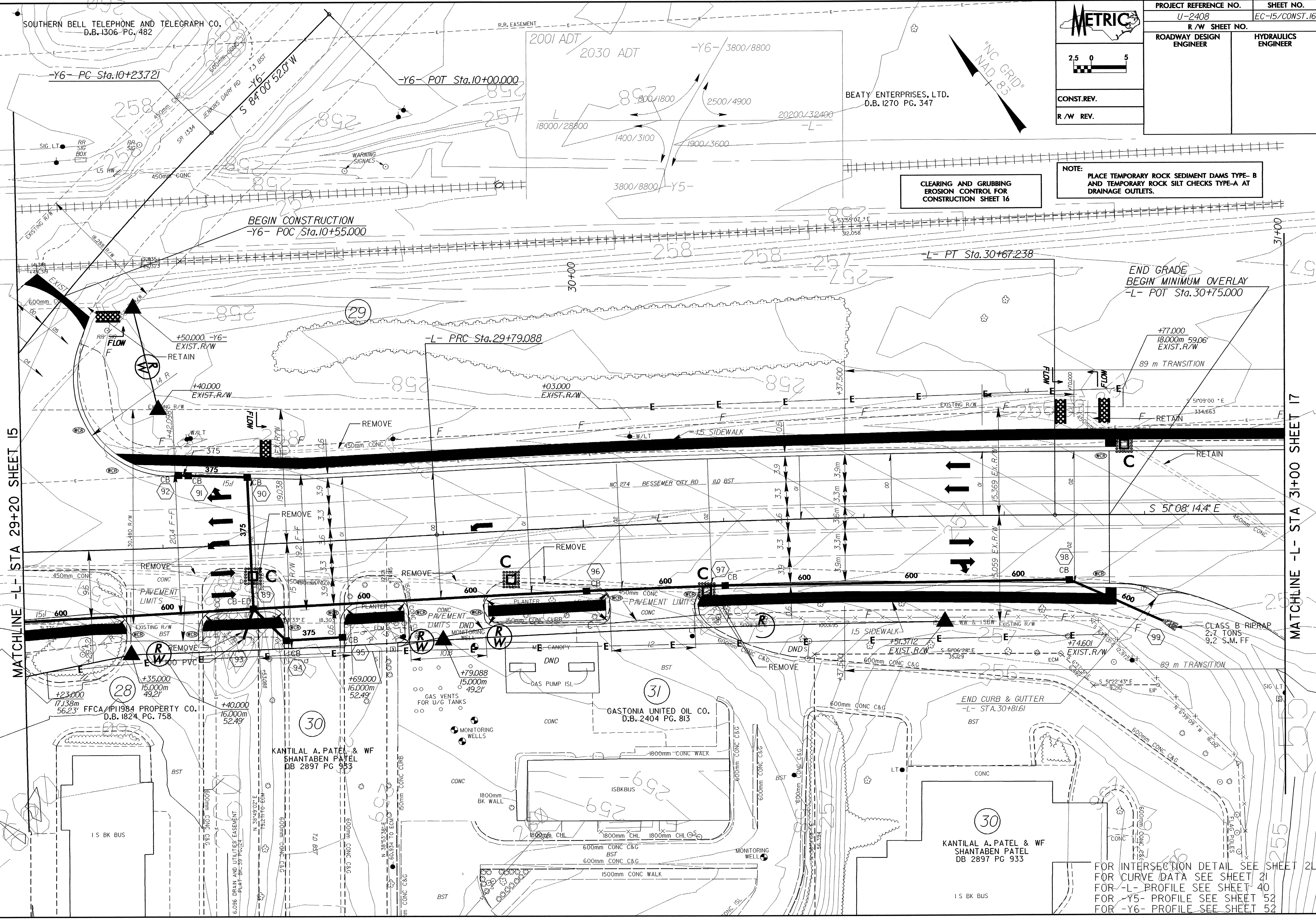
NOTE:  
PLACE TEMPORARY ROCK SEDIMENT DAMS TYPE-B  
AND TEMPORARY ROCK SILT CHECKS TYPE-A AT  
DRAINAGE OUTLETS.

BEGIN CONSTRUCTION  
-Y6- POC Sta.10+55.000

END GRADE  
BEGIN MINIMUM OVERLAY  
-L- POT Sta.30+75.000

MATCHLINE -L- STA 29+20 SHEET 15

MATCHLINE -L- STA 31+00 SHEET 17



+23.000  
17.138m  
56.23'  
FFCA/PI1984 PROPERTY CO.  
D.B. 1824 PG. 758

KANTILAL A. PATEL & WF  
SHANTABEN PATEL  
DB 2897 PG 983

GASTONIA UNITED OIL CO.  
D.B. 2404 PG. 813

KANTILAL A. PATEL & WF  
SHANTABEN PATEL  
DB 2897 PG 933

FOR INTERSECTION DETAIL SEE SHEET 2L  
FOR CURVE DATA SEE SHEET 21  
FOR -L- PROFILE SEE SHEET 40  
FOR -Y5- PROFILE SEE SHEET 52  
FOR -Y6- PROFILE SEE SHEET 52