

**METRIC**

CONST. REV.  
R/W REV.

PROJECT REFERENCE NO. U-2408	SHEET NO. EC-20/CONST. 21
R/W SHEET NO.	
ROADWAY DESIGN ENGINEER	HYDRAULICS ENGINEER

NOTE:  
PLACE TEMPORARY ROCK SEDIMENT DAMS TYPE- B  
AND TEMPORARY ROCK SILT CHECKS TYPE-A AT  
DRAINAGE OUTLETS.

CLEARING AND GRUBBING  
EROSION CONTROL FOR  
CONSTRUCTION SHEET 21

-L- POC Sta. 41+02.000  
-Y14- POT Sta. 10+00.000

-L- POC Sta. 39+91.000  
-Y10- POT Sta. 10+00.000

-L- POC Sta. 40+70.000  
-Y12- POT Sta. 10+00.000

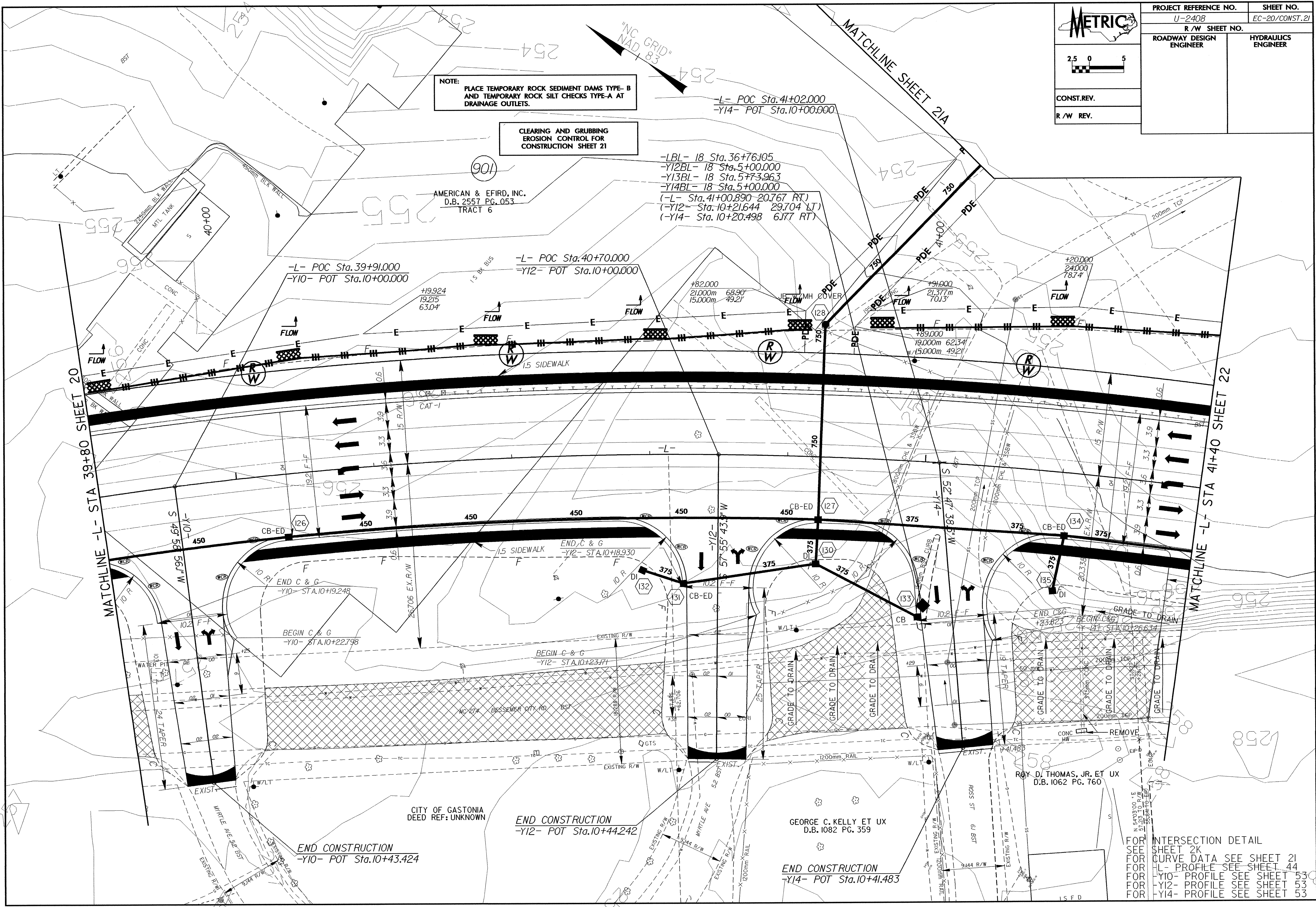
-L- POC Sta. 41+00.890-20.767 RT)  
(-Y12- Sta. 10+21.644 29.704 LT)  
(-Y14- Sta. 10+20.498 6.177 RT)

AMERICAN & EFIRD, INC.  
D.B. 2557 PG. 053  
TRACT 6

+19.000  
21.377m  
70.13'

+19.000  
19.000m 62.34'  
15.000m 49.21'

+20.000  
24.000  
78.74'



END CONSTRUCTION  
-Y10- POT Sta. 10+43.424

END CONSTRUCTION  
-Y12- POT Sta. 10+44.242

END CONSTRUCTION  
-Y14- POT Sta. 10+41.483

INTERSECTION DETAIL  
FOR SHEET 2K  
FOR CURVE DATA SEE SHEET 21  
FOR L- PROFILE SEE SHEET 44  
FOR -Y10- PROFILE SEE SHEET 53  
FOR -Y12- PROFILE SEE SHEET 53  
FOR -Y14- PROFILE SEE SHEET 53

CITY OF GASTONIA  
DEED REF: UNKNOWN

GEORGE C. KELLY ET UX  
D.B. 1082 PG. 359

ROY D. THOMAS, JR. ET UX  
D.B. 1062 PG. 760