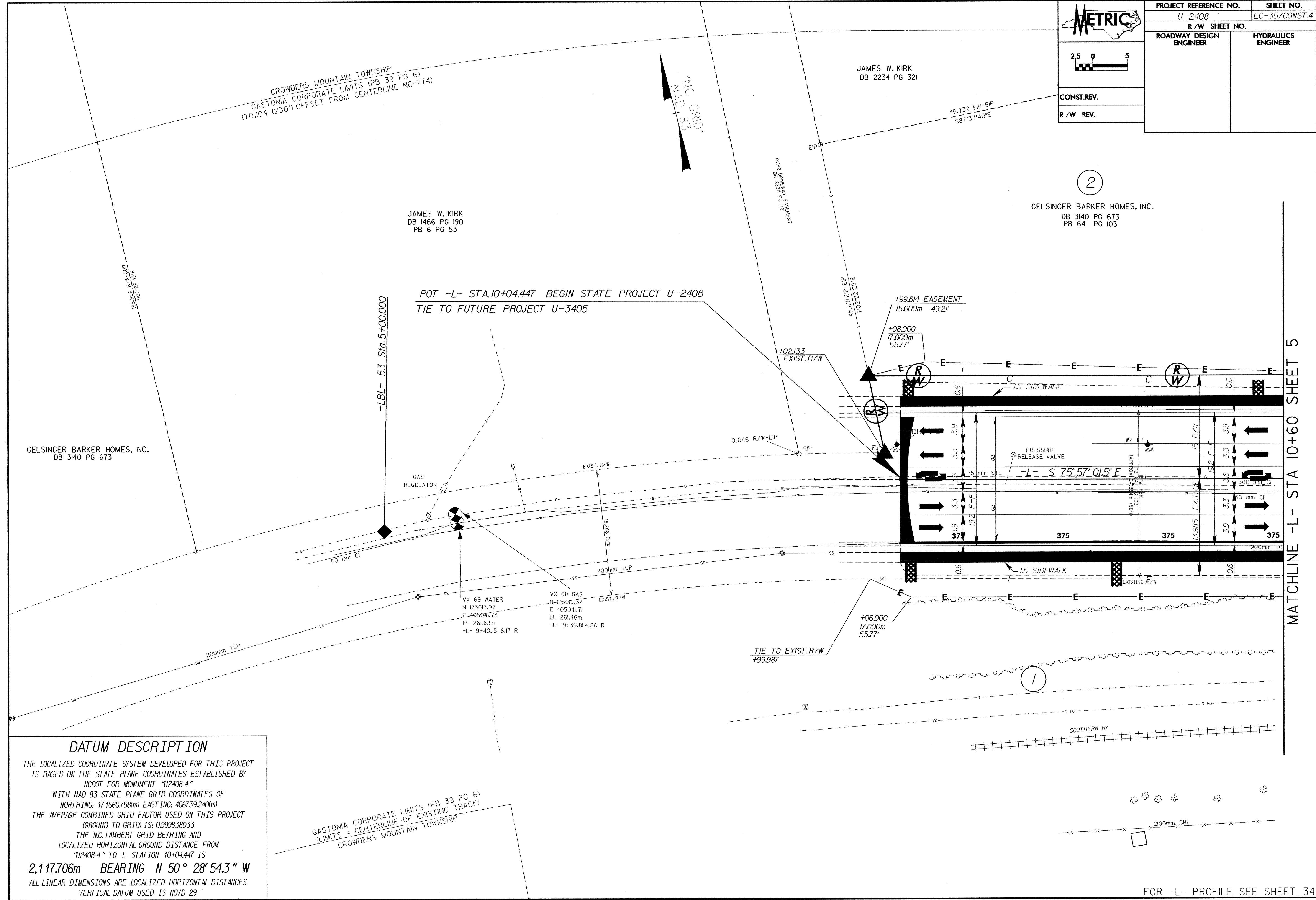
 2.5 0 5 CONST. REV. R / W REV.	PROJECT REFERENCE NO.	SHEET NO.
	U-2408	EC-35/CONST.4
	R / W SHEET NO.	
ROADWAY DESIGN ENGINEER	HYDRAULICS ENGINEER	



DATUM DESCRIPTION

THE LOCALIZED COORDINATE SYSTEM DEVELOPED FOR THIS PROJECT IS BASED ON THE STATE PLANE COORDINATES ESTABLISHED BY NCDOT FOR MONUMENT "U2408-4" WITH NAD 83 STATE PLANE GRID COORDINATES OF NORTHING: 171660798(m) EASTING: 406739240(m) THE AVERAGE COMBINED GRID FACTOR USED ON THIS PROJECT (GROUND TO GRID) IS: 0.999838033 THE N.C. LAMBERT GRID BEARING AND LOCALIZED HORIZONTAL GROUND DISTANCE FROM "U2408-4" TO -L- STATION 10+04.447 IS 2,117.706m BEARING N 50° 28' 54.3" W ALL LINEAR DIMENSIONS ARE LOCALIZED HORIZONTAL DISTANCES VERTICAL DATUM USED IS NGVD 29

GASTONIA CORPORATE LIMITS (PB 39 PG 6)
 (LIMITS = CENTERLINE OF EXISTING TRACK)
 CROWDERS MOUNTAIN TOWNSHIP

MATCHLINE -L- STA 10+60 SHEET 5

FOR -L- PROFILE SEE SHEET 34