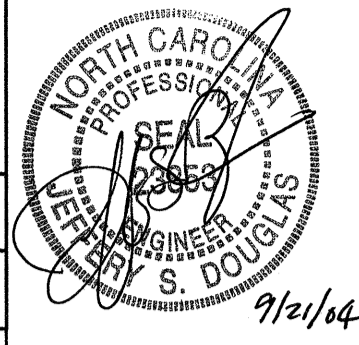
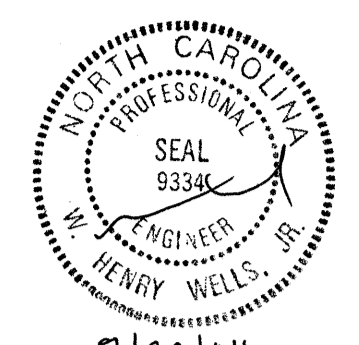
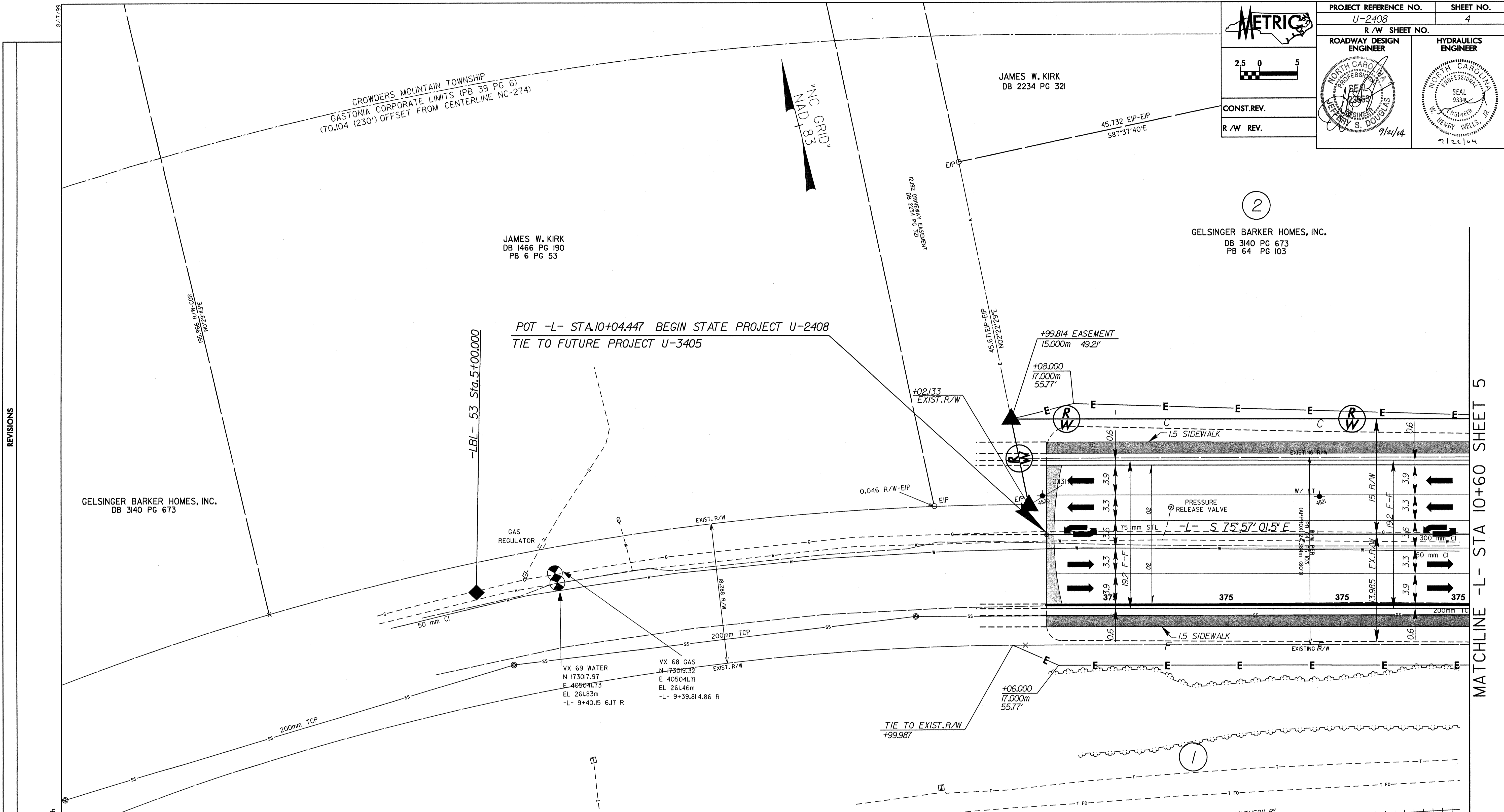
 2.5 0 5	PROJECT REFERENCE NO.	SHEET NO.
	U-2408	4
CONST.REV.	R/W SHEET NO.	
R/W REV.	ROADWAY DESIGN ENGINEER	HYDRAULICS ENGINEER
	 7/2/04	 7/22/04



REVISIONS

MATCHLINE -L- STA 10+60 SHEET 5

**DATUM DESCRIPTION**

THE LOCALIZED COORDINATE SYSTEM DEVELOPED FOR THIS PROJECT IS BASED ON THE STATE PLANE COORDINATES ESTABLISHED BY NCDOT FOR MONUMENT "U2408-4"

WITH NAD 83 STATE PLANE GRID COORDINATES OF  
 NORTHING: 171660798(m) EASTING: 406739240(m)

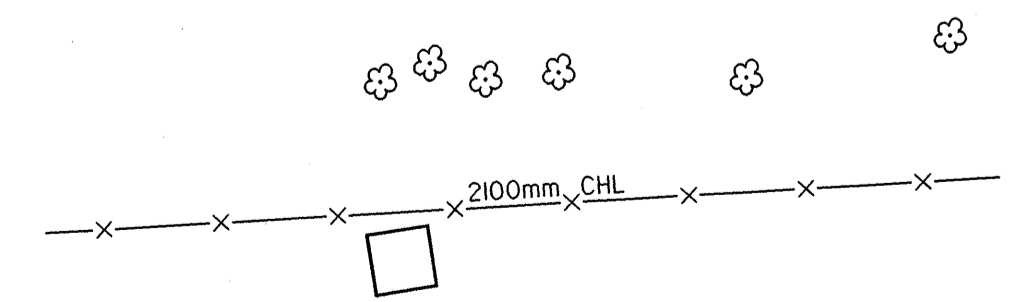
THE AVERAGE COMBINED GRID FACTOR USED ON THIS PROJECT (GROUND TO GRID) IS: 0.999838033

THE N.C. LAMBERT GRID BEARING AND LOCALIZED HORIZONTAL GROUND DISTANCE FROM "U2408-4" TO -L- STATION 10+04.447 IS

**2,117.706m BEARING N 50° 28' 54.3" W**

ALL LINEAR DIMENSIONS ARE LOCALIZED HORIZONTAL DISTANCES  
 VERTICAL DATUM USED IS NGVD 29

GASTONIA CORPORATE LIMITS (PB 39 PG 6)  
 (LIMITS = CENTERLINE OF EXISTING TRACK)  
 CROWDERS MOUNTAIN TOWNSHIP



FOR -L- PROFILE SEE SHEET 34

8/17/04  
 P:\SEP-2004\1121\1121-001\Projects\U2408\proj\U2408a04.dwg  
 11/21/04