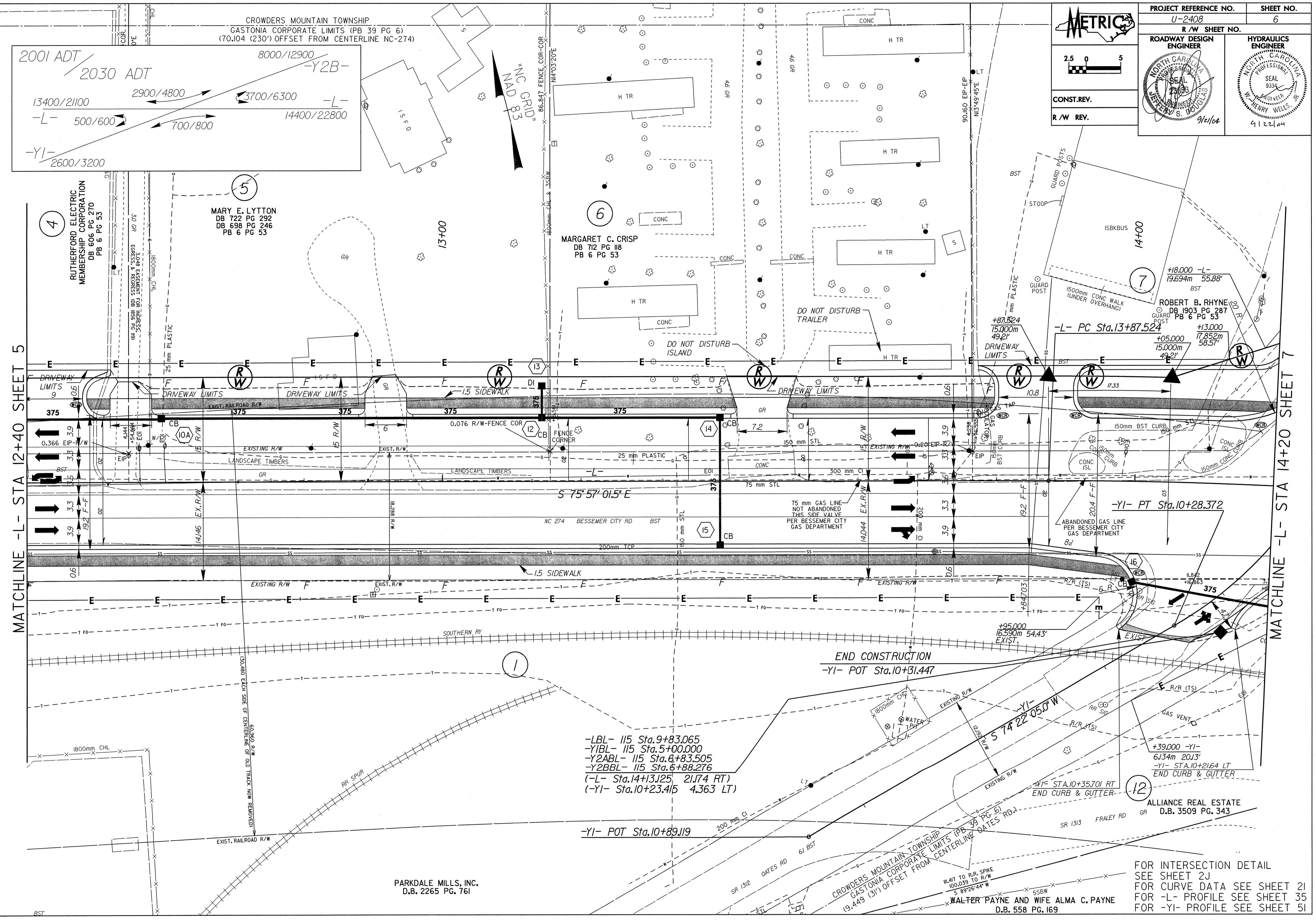
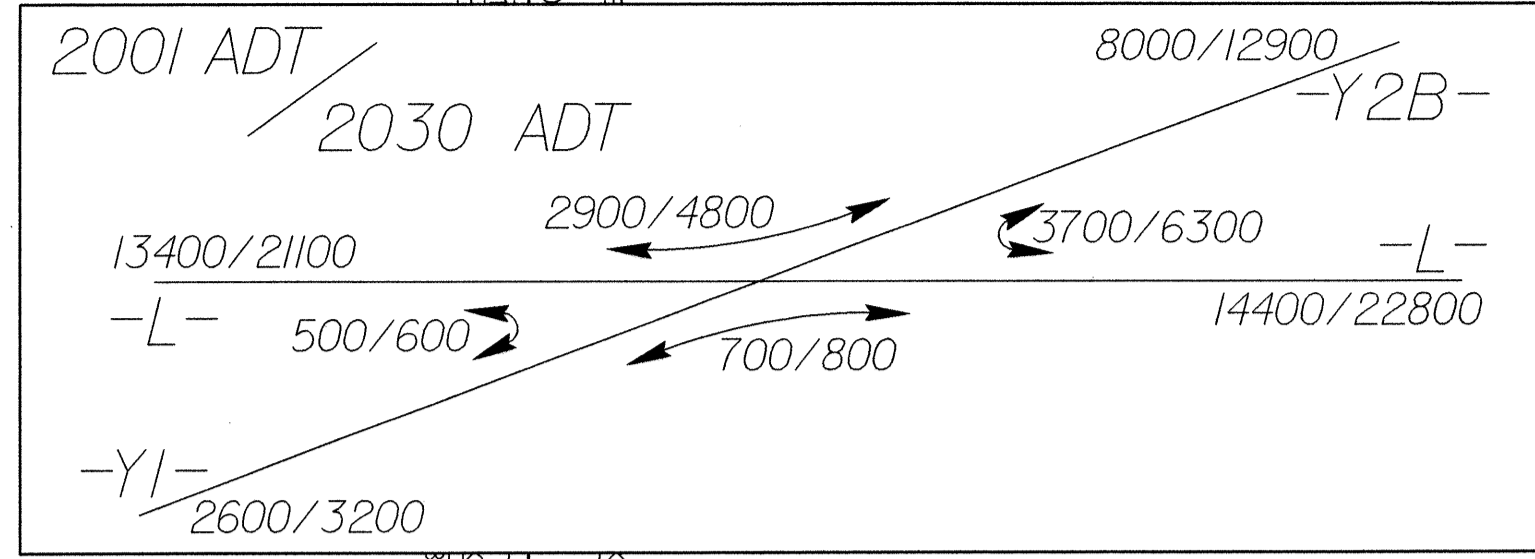


METRIC

2.5 0 5

CONST. REV.
R/W REV.

PROJECT REFERENCE NO. U-2408	SHEET NO. 6
R/W SHEET NO.	
ROADWAY DESIGN ENGINEER SEAL W. JERRY WELLS, III 9/21/04	HYDRAULICS ENGINEER SEAL 9334 W. JERRY WELLS, III 9/22/04



MATCHLINE -L- STA 12+40 SHEET 5

MATCHLINE -L- STA 14+20 SHEET 7

REVISIONS

- LBL- 115 Sta. 9+83.065
- Y1BL- 115 Sta. 5+00.000
- Y2ABL- 115 Sta. 6+83.505
- Y2BBL- 115 Sta. 6+88.276
- (-L- Sta. 14+13.125, 21.774 RT)
- (-Y1- Sta. 10+23.415, 4.363 LT)

-Y1- POT Sta. 10+89.119

END CONSTRUCTION
-Y1- POT Sta. 10+31.447

12
+39,000 -Y1-
6.134m 20.13'
-Y1- STA. 10+21.64 LT
END CURB & GUTTER

ALLIANCE REAL ESTATE
D.B. 3509 PG. 343

PARKDALE MILLS, INC.
D.B. 2265 PG. 761

FOR INTERSECTION DETAIL
SEE SHEET 2J
FOR CURVE DATA SEE SHEET 2I
FOR -L- PROFILE SEE SHEET 35
FOR -Y1- PROFILE SEE SHEET 5I

24-SEP-2004 10:22
D:\Projects\U2408\p01\U2408a06.p01