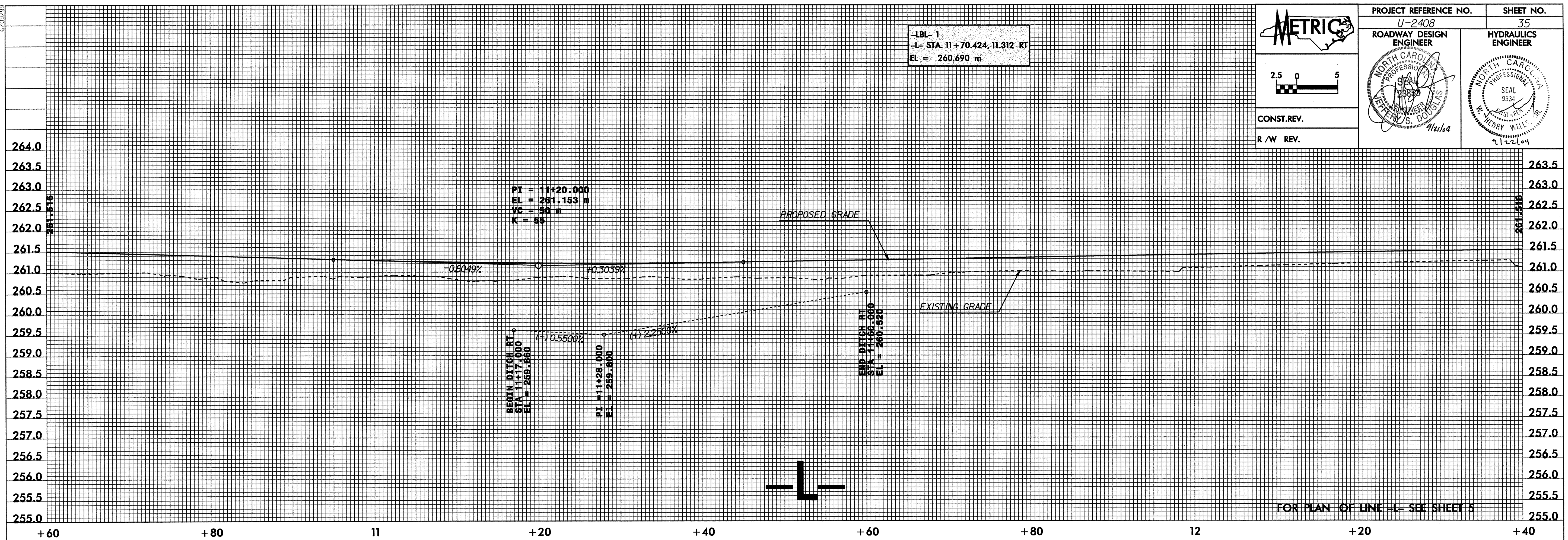


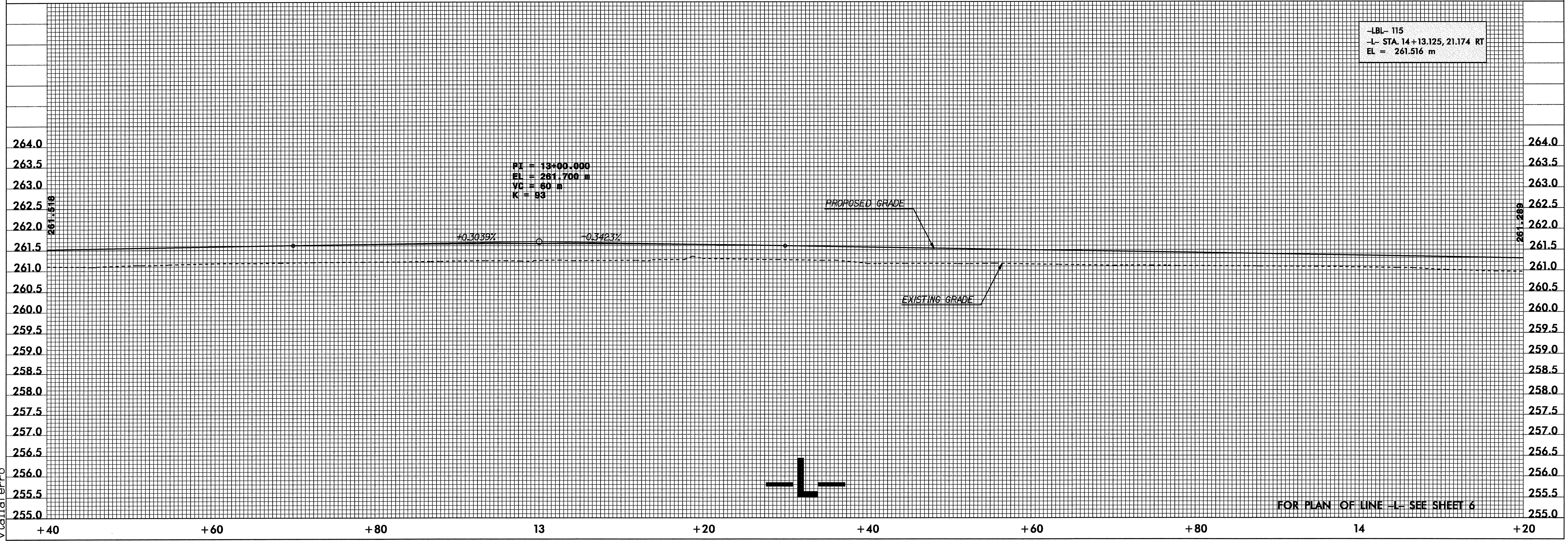
CONST. REV.  
R / W REV.

PROJECT REFERENCE NO. U-2408	SHEET NO. 35
ROADWAY DESIGN ENGINEER NORTH CAROLINA PROFESSIONAL ENGINEER SEAL 9334 HENRY S. DOUGLAS	HYDRAULICS ENGINEER NORTH CAROLINA PROFESSIONAL ENGINEER SEAL 9334 HENRY WELLS

-LBL- 1  
-L- STA. 11+70.424, 11.312 RT  
EL = 260.690 m



-LBL- 115  
-L- STA. 14+13.125, 21.174 RT  
EL = 261.516 m



08-SEP-2004 08:58  
I:\Roadway\Projects\U2408\proj\U2408.pf1  
vta11efero