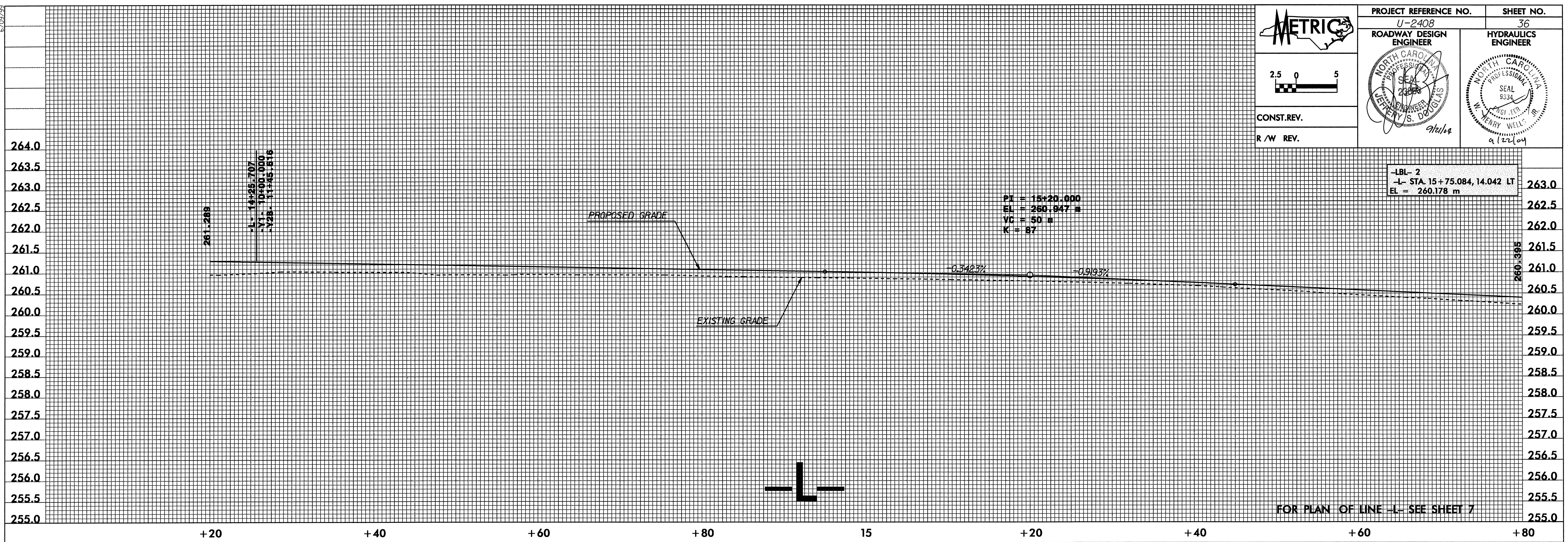


CONST. REV.
R /W REV.

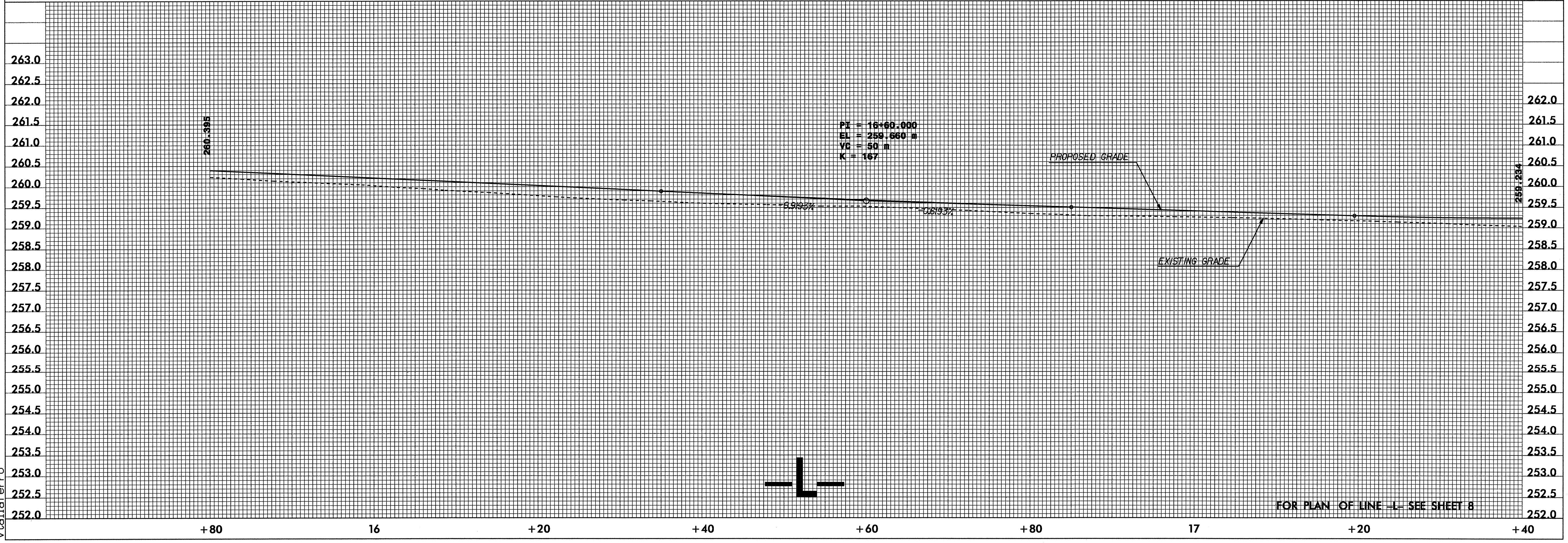
PROJECT REFERENCE NO. U-2408	SHEET NO. 36
ROADWAY DESIGN ENGINEER NORTH CAROLINA PROFESSIONAL ENGINEER W. S. DUGAN, III 9/21/04	HYDRAULICS ENGINEER NORTH CAROLINA PROFESSIONAL ENGINEER SEAL 9334 W. PERRY WELLS, JR. 9/22/04

-LBI- 2
-L- STA. 15+75.084, 14.042 LT
EL = 260.178 m

PI = 15+20.000
EL = 260.947 m
VC = 50 m
K = 87



PI = 16+60.000
EL = 259.660 m
VC = 50 m
K = 167



08-SEP-2004 08:58
j:\roadway\projects\Dot\ncdot\U2408\proj\U2408.pfl
vtalierfo