

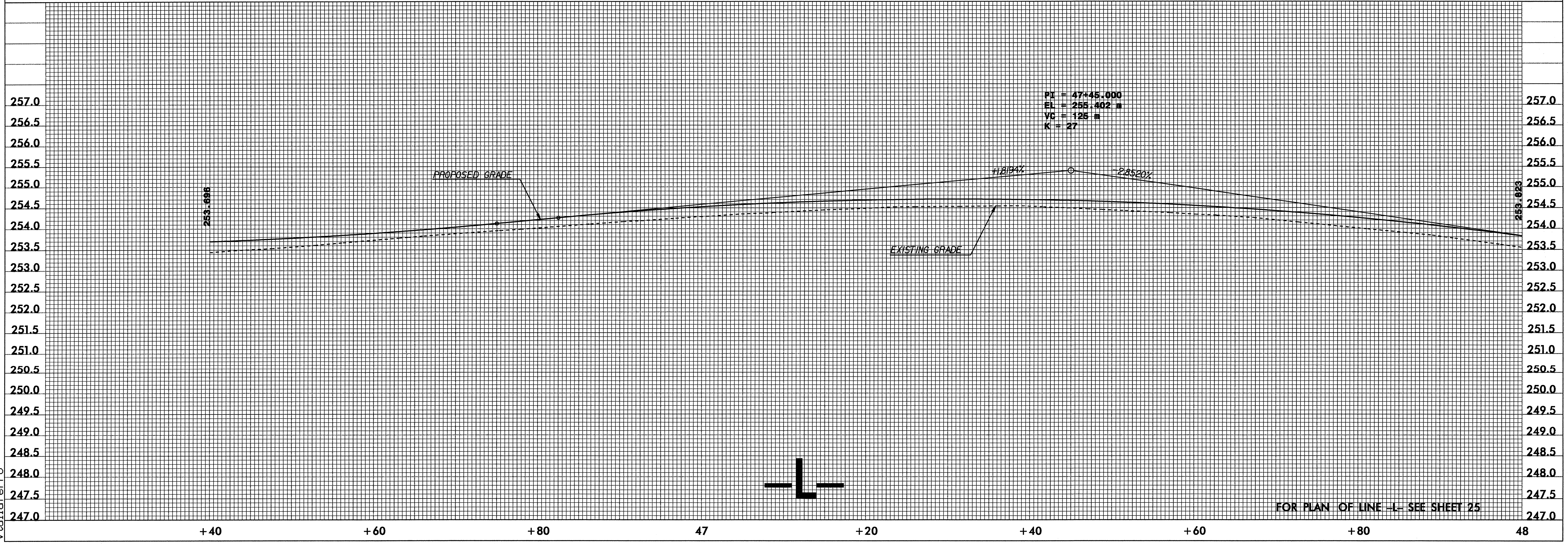
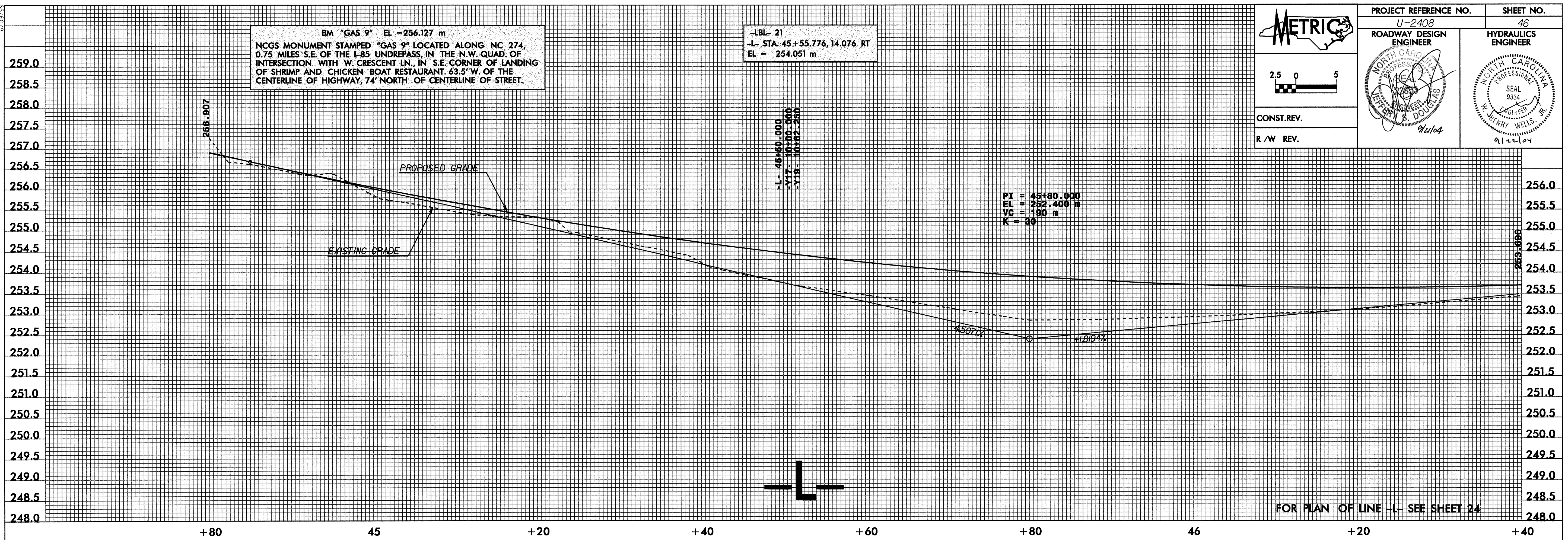
METRIC

CONST. REV.
R/W REV.

PROJECT REFERENCE NO. U-2408	SHEET NO. 46
ROADWAY DESIGN ENGINEER S. DOUGLAS 9/21/04	HYDRAULICS ENGINEER W. WELLS 9/21/04

BM "GAS 9" EL = 256.127 m
 NCGS MONUMENT STAMPED "GAS 9" LOCATED ALONG NC 274,
 0.75 MILES S.E. OF THE I-85 UNDERPASS, IN THE N.W. QUAD. OF
 INTERSECTION WITH W. CRESCENT LN., IN S.E. CORNER OF LANDING
 OF SHRIMP AND CHICKEN BOAT RESTAURANT. 63.5' W. OF THE
 CENTERLINE OF HIGHWAY, 74' NORTH OF CENTERLINE OF STREET.

-LBL- 21
 -L STA. 45+55.776, 14.076 RT
 EL = 254.051 m



08-SEP-2004 08:59
 J:\Roadway\Projects\Dot\ncdot\U2408\proj\U2408.pf1
 vta\lferro