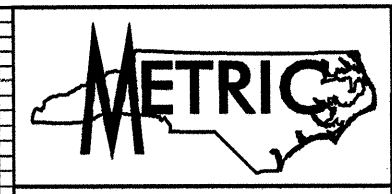
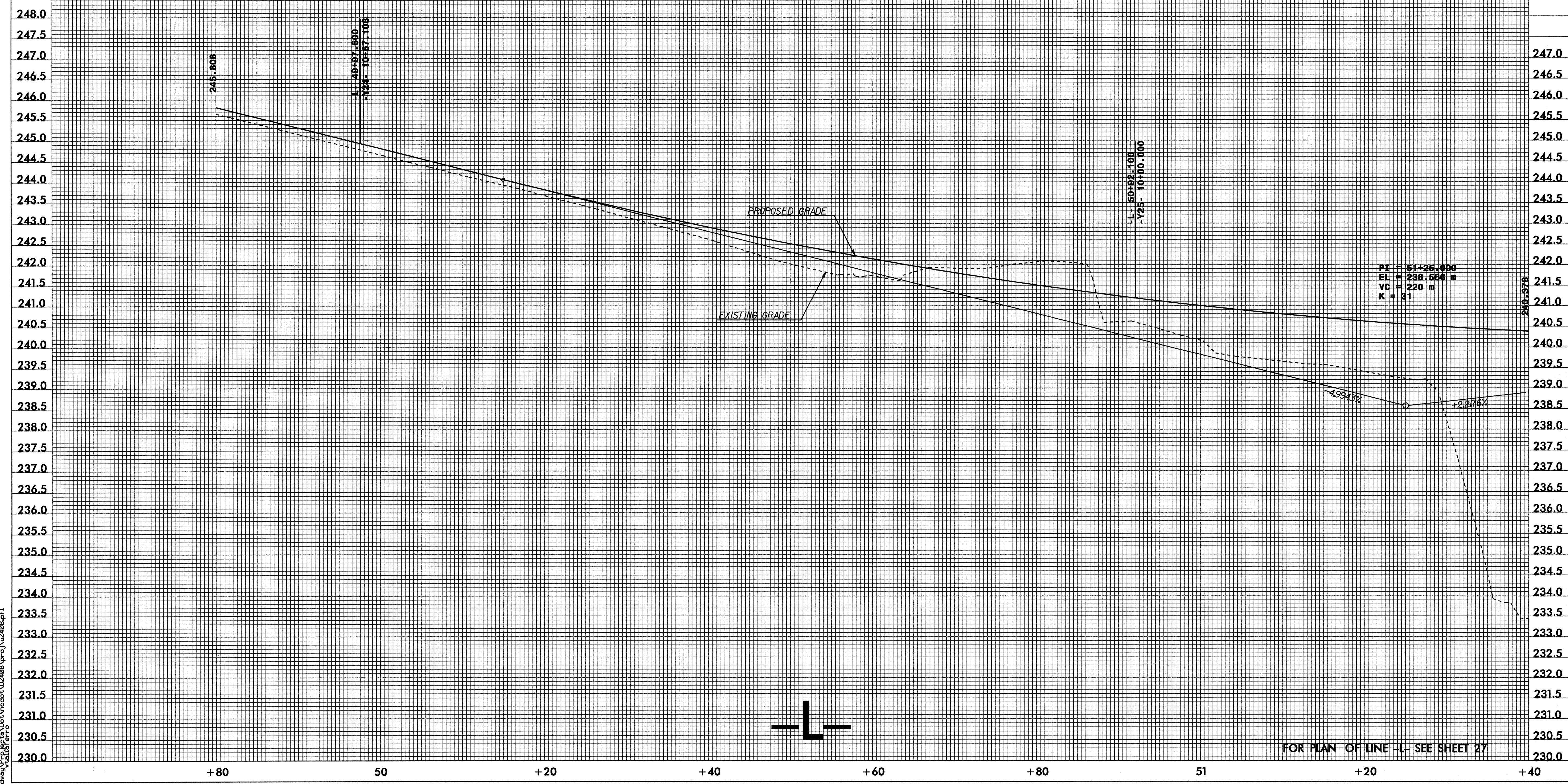
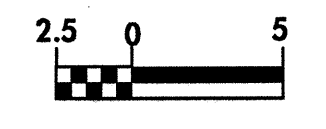


5/10/09

-LBL- 23  
-L- STA. 49+90.863, 7.653 LT.  
EL = 245.099 m



PROJECT REFERENCE NO. U-2408	SHEET NO. 48
ROADWAY DESIGN ENGINEER	HYDRAULICS ENGINEER
CONST. REV.	
R / W REV.	



PI = 51+25.000  
 EL = 239.566 m  
 VC = 220 m  
 K = 31

FOR PLAN OF LINE -L- SEE SHEET 27

08-SEP-2004 08:59  
g:\Roadway\Projects\Uc2408\pco\U2408.pfl