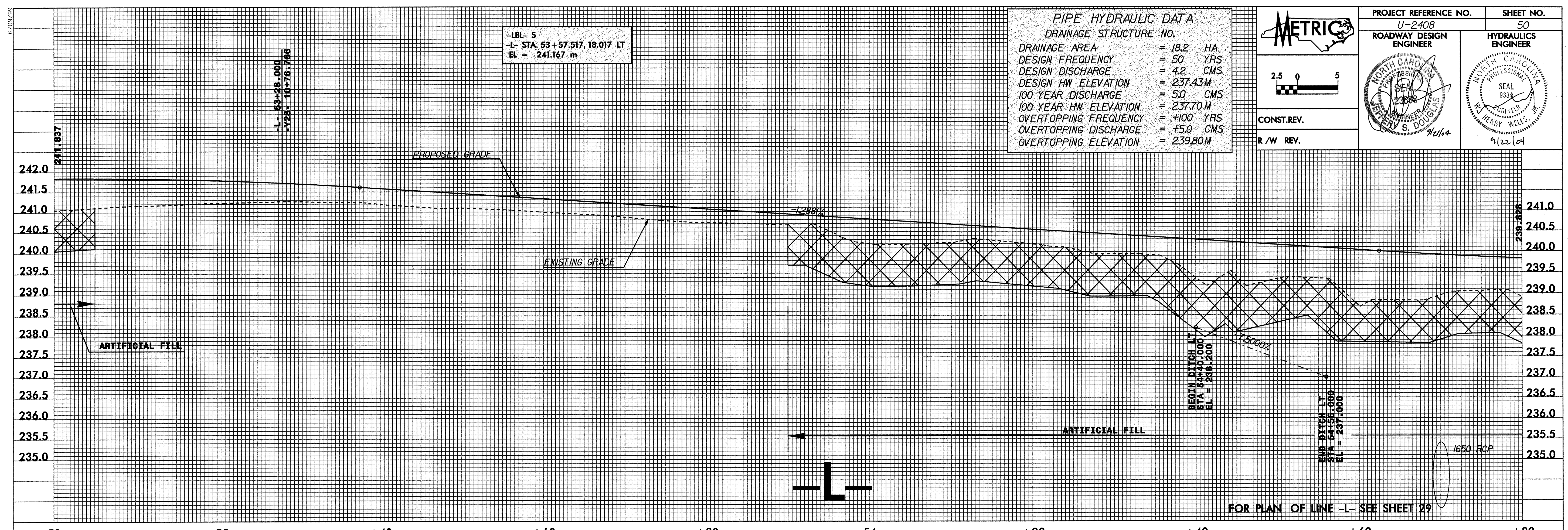


08_SEP_2004 08:59
 y:\Roadway\Projects\U2408\proj\U2408.pfl
 vta1a1erfo



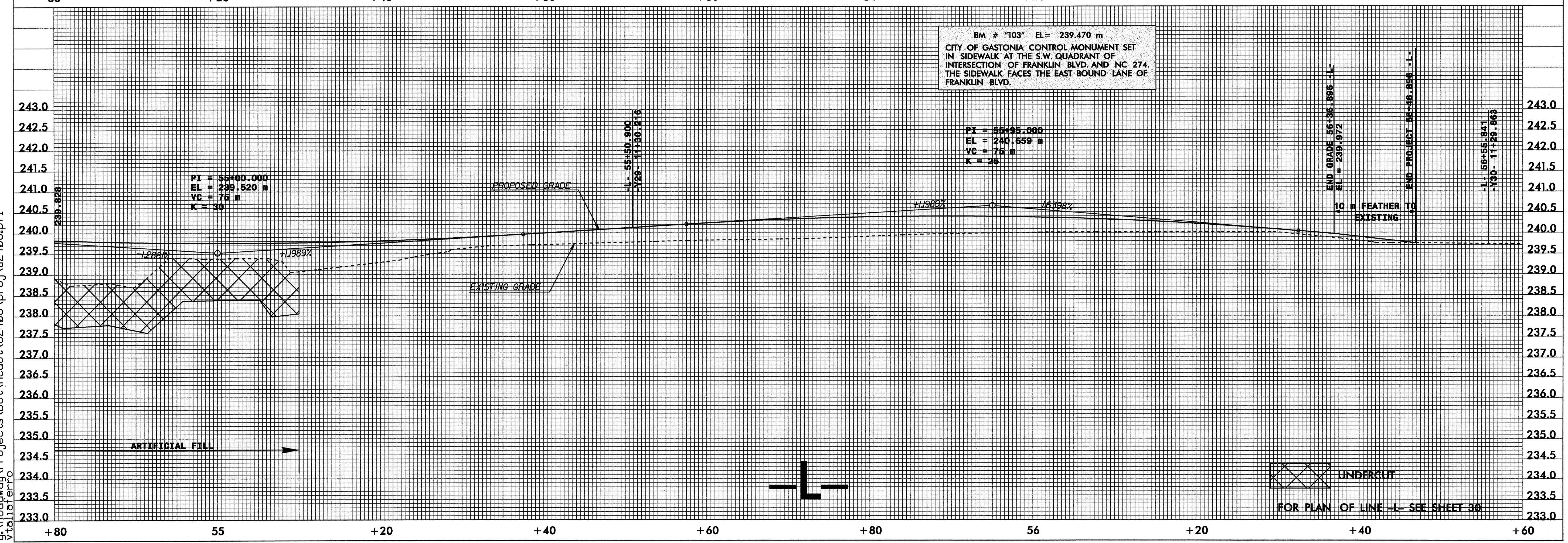
-L- 5
 -L- STA. 53+57.517, 18.017 LT
 EL = 241.167 m

PIPE HYDRAULIC DATA
 DRAINAGE STRUCTURE NO.

DRAINAGE AREA	= 18.2 HA
DESIGN FREQUENCY	= 50 YRS
DESIGN DISCHARGE	= 4.2 CMS
DESIGN HW ELEVATION	= 237.43M
100 YEAR DISCHARGE	= 5.0 CMS
100 YEAR HW ELEVATION	= 237.70M
OVERTOPPING FREQUENCY	= +100 YRS
OVERTOPPING DISCHARGE	= +5.0 CMS
OVERTOPPING ELEVATION	= 239.80M

METRIC
 2.5 0 5
 CONST.REV.
 R/W REV.

PROJECT REFERENCE NO. U-2408
 ROADWAY DESIGN ENGINEER
 SHEET NO. 50
 HYDRAULICS ENGINEER
 NORTH CAROLINA PROFESSIONAL SEAL
 9334
 S. DOUBIAS
 HENRY WELLS, JR.
 9/22/04



BM # "103" EL = 239.470 m
 CITY OF GASTONIA CONTROL MONUMENT SET
 IN SIDEWALK AT THE S.W. QUADRANT OF
 INTERSECTION OF FRANKLIN BLVD. AND NC 274.
 THE SIDEWALK FACES THE EAST BOUND LANE OF
 FRANKLIN BLVD.

PI = 55+95.000
 EL = 240.659 m
 VC = 75 m
 K = 26

PI = 55+00.000
 EL = 238.520 m
 VC = 75 m
 K = 30

FOR PLAN OF LINE L- SEE SHEET 29
 FOR PLAN OF LINE L- SEE SHEET 30
 UNDERCUT