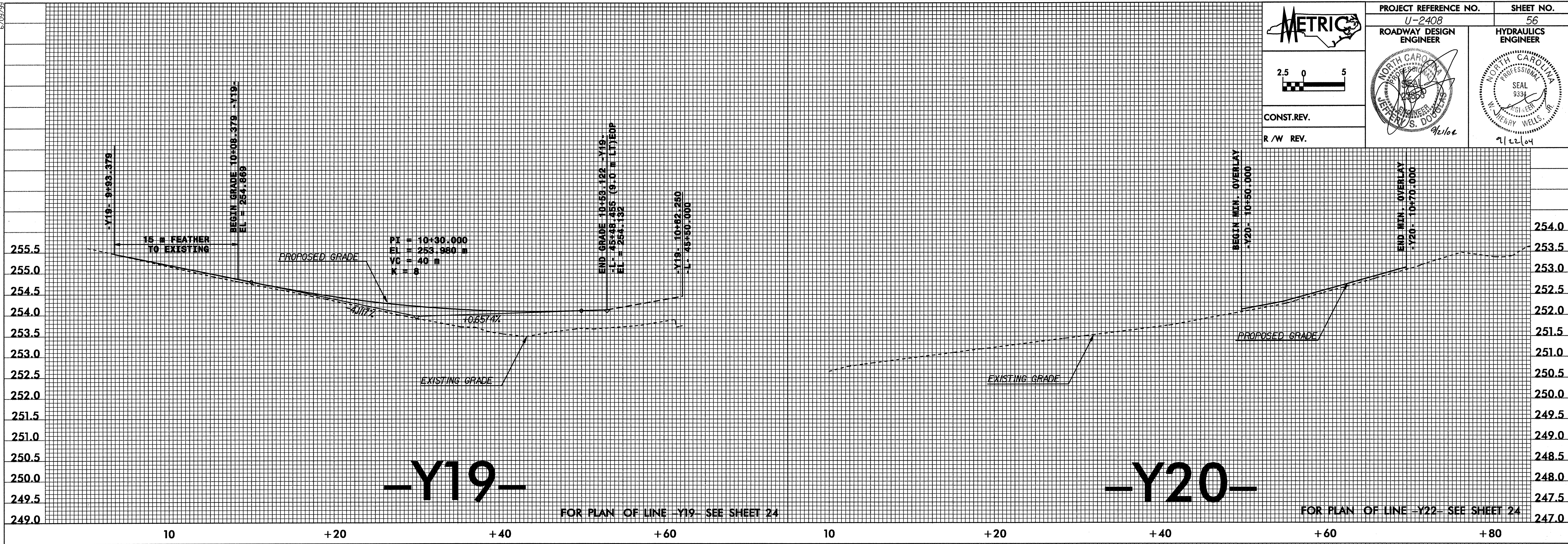


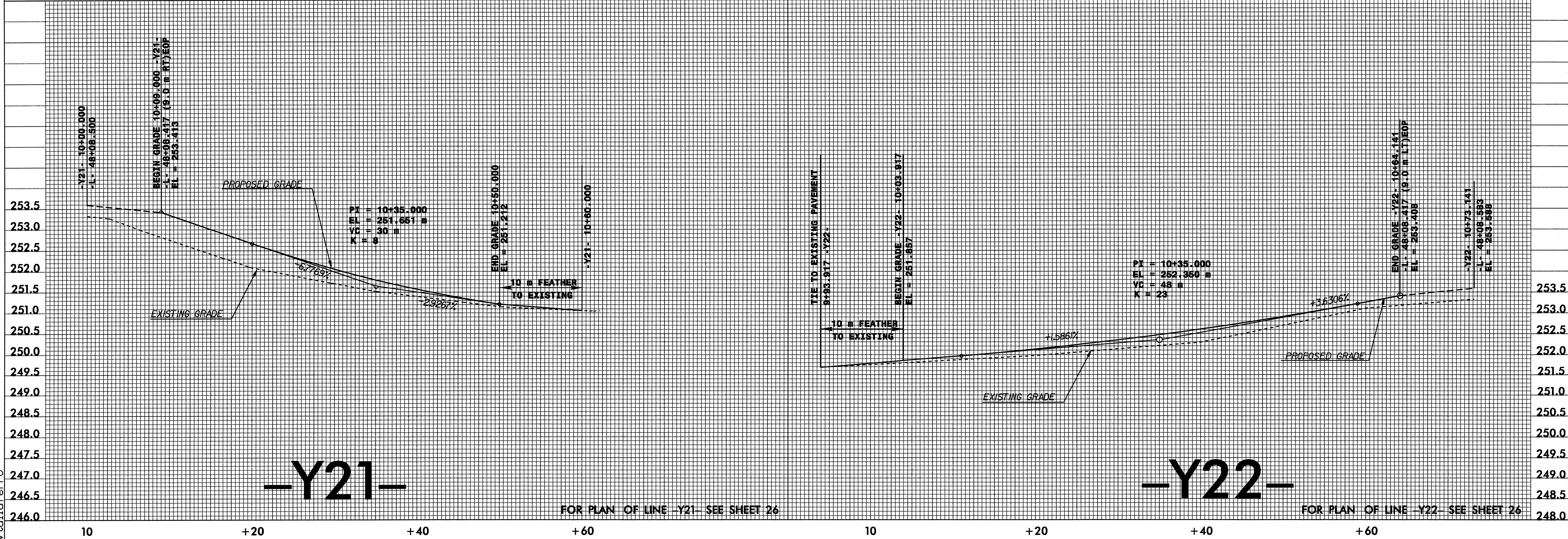
CONST. REV.
R/W REV.

PROJECT REFERENCE NO. U-2408	SHEET NO. 56
ROADWAY DESIGN ENGINEER NORTH CAROLINA PROFESSIONAL ENGINEER WALTER S. DOUGLAS 9/2/04	HYDRAULICS ENGINEER NORTH CAROLINA PROFESSIONAL ENGINEER SEAL 9334 MICHAEL WELLS, III 9/22/04



-Y19-

-Y20-



-Y21-

-Y22-

08-SEP-2004 09:00
j:\roadway\Projects\Dot\ncdot\U2408\proj\U2408.pfl
vta\lterro

6/09/99