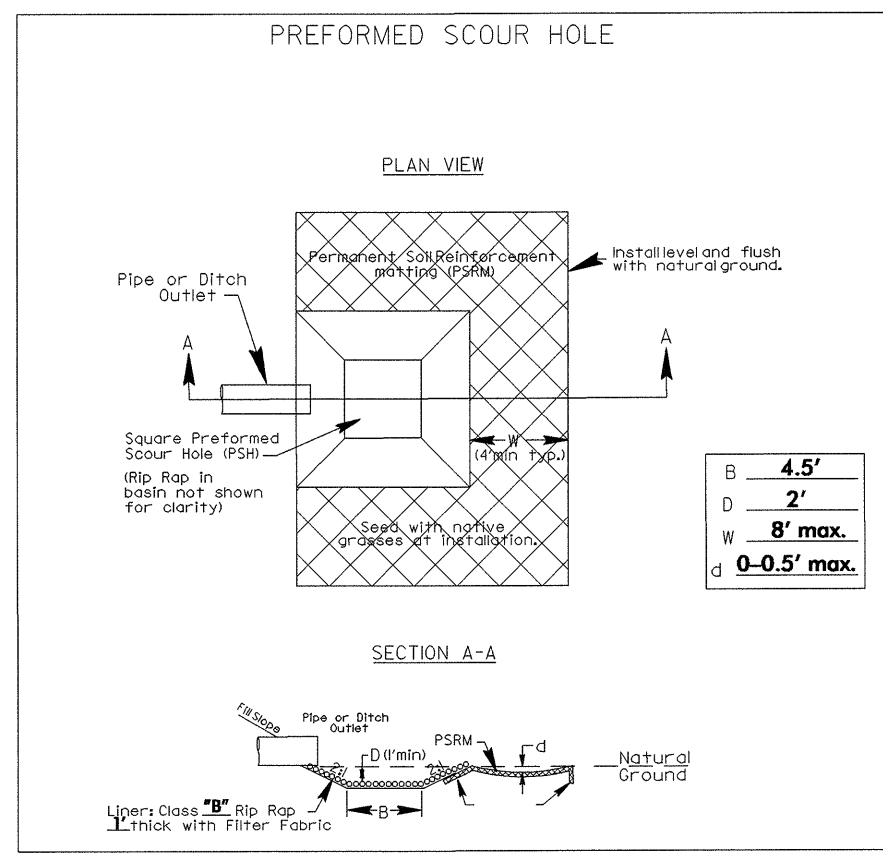
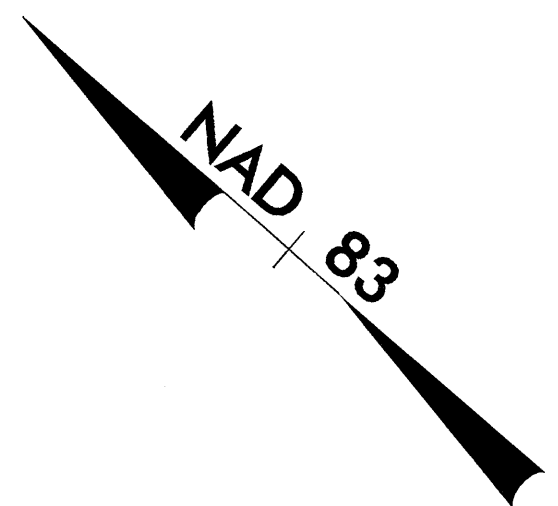


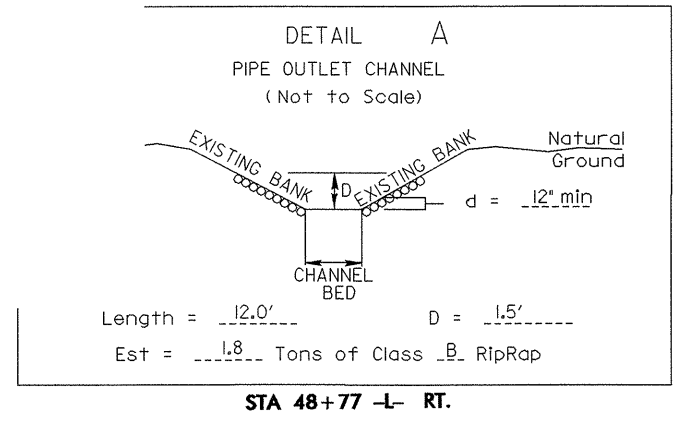
PROJECT REFERENCE NO.	SHEET NO.
R-2904	UC-4
DESIGNED BY: JH	
DRAWN BY: JH	
CHECKED BY: CDB	
APPROVED BY: CDB	
REVISED:	
NORTH CAROLINA DEPARTMENT OF TRANSPORTATION DESIGN SERVICES UNIT PHONE: (919) 250-4128 FAX: (919) 250-4119	
UTILITY CONSTRUCTION PLANS ONLY	

THE 16" WATER LINE OWNED BY CITY OF DURHAM.

FOR -L- PROFILE SEE SHEET 9
 PSH: PREFORMED SCOUR HOLE (SEE DETAIL)
 SBG: SHOULDER BERM GUTTER

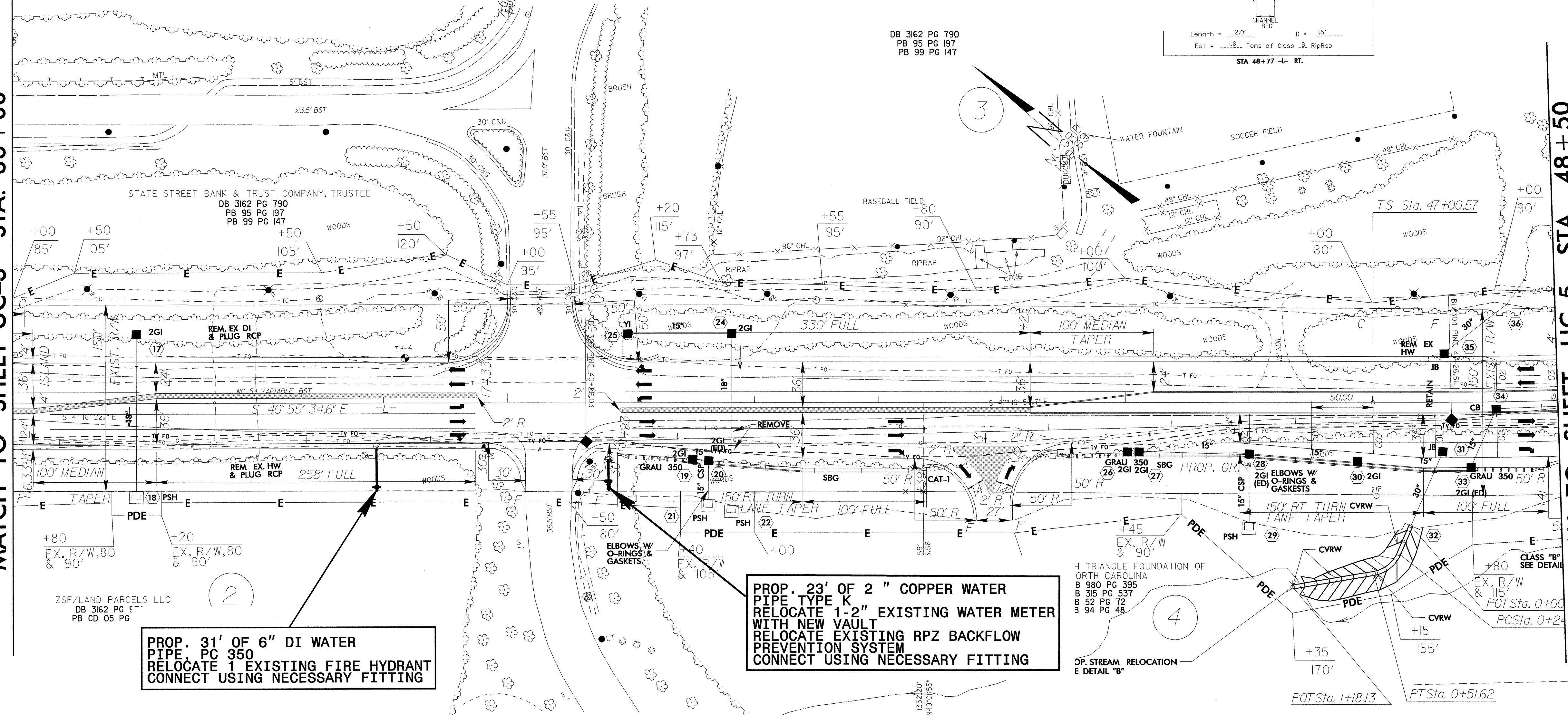


-L-
 PIs Sta 48+33.92
 Fs = 3'00" 56.0"
 Ls = 200.00
 LT = 133.35
 ST = 66.68



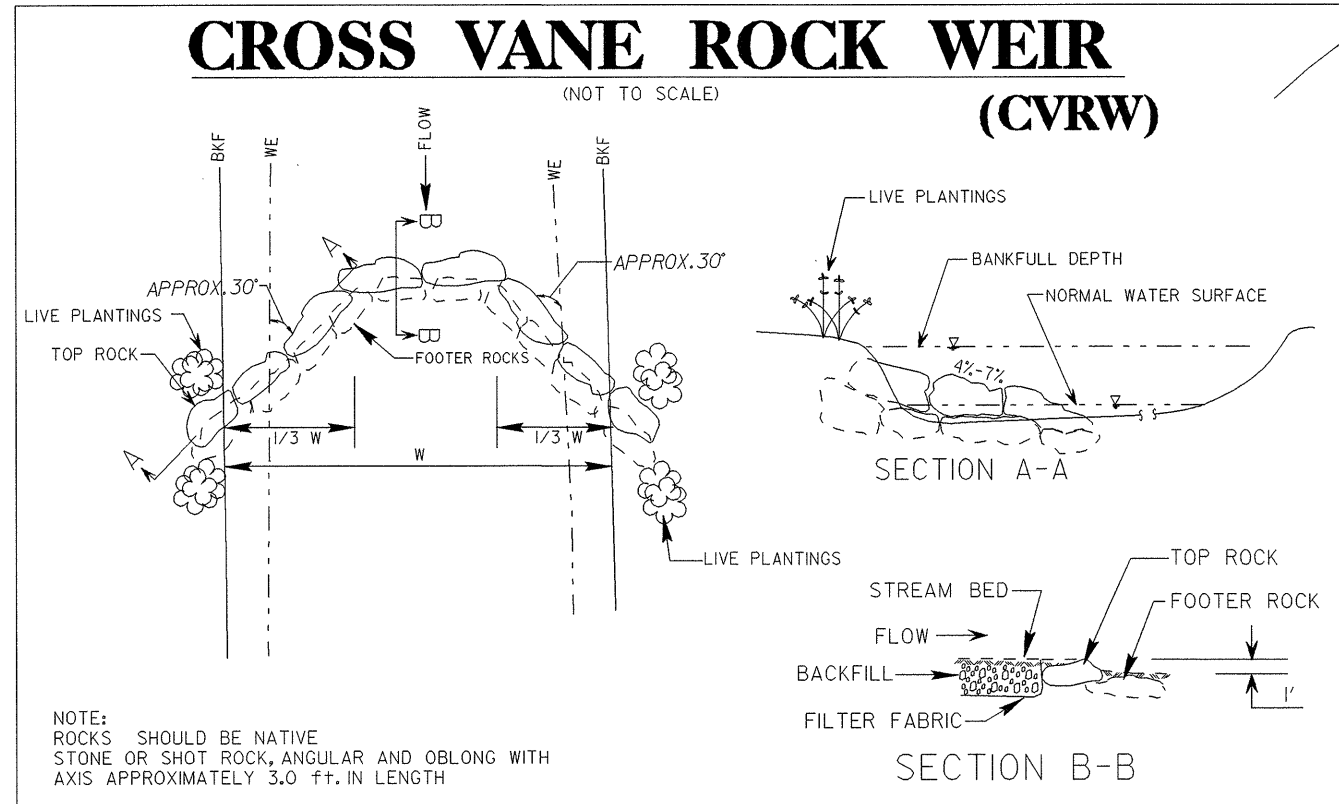
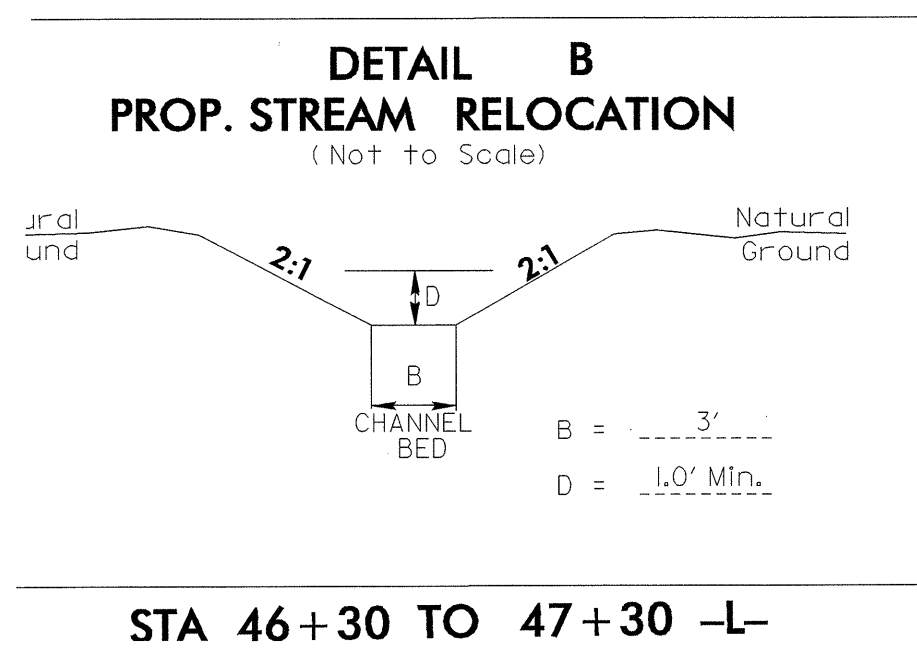
MATCH TO SHEET UC-3 STA. 36+00

MATCH TO SHEET UC-5 STA. 48+50



**PROP. 31' OF 6" DI WATER PIPE, PG 350
 RELOCATE 1 EXISTING FIRE HYDRANT
 CONNECT USING NECESSARY FITTING**

**PROP. 23' OF 2" COPPER WATER PIPE TYPE K
 RELOCATE 1-2" EXISTING WATER METER WITH NEW VAULT
 RELOCATE EXISTING RPZ BACKFLOW PREVENTION SYSTEM
 CONNECT USING NECESSARY FITTING**



03-AUG-2004 15:35 R:\Utility\Projects\2904_UC4.DGN 8/17/99