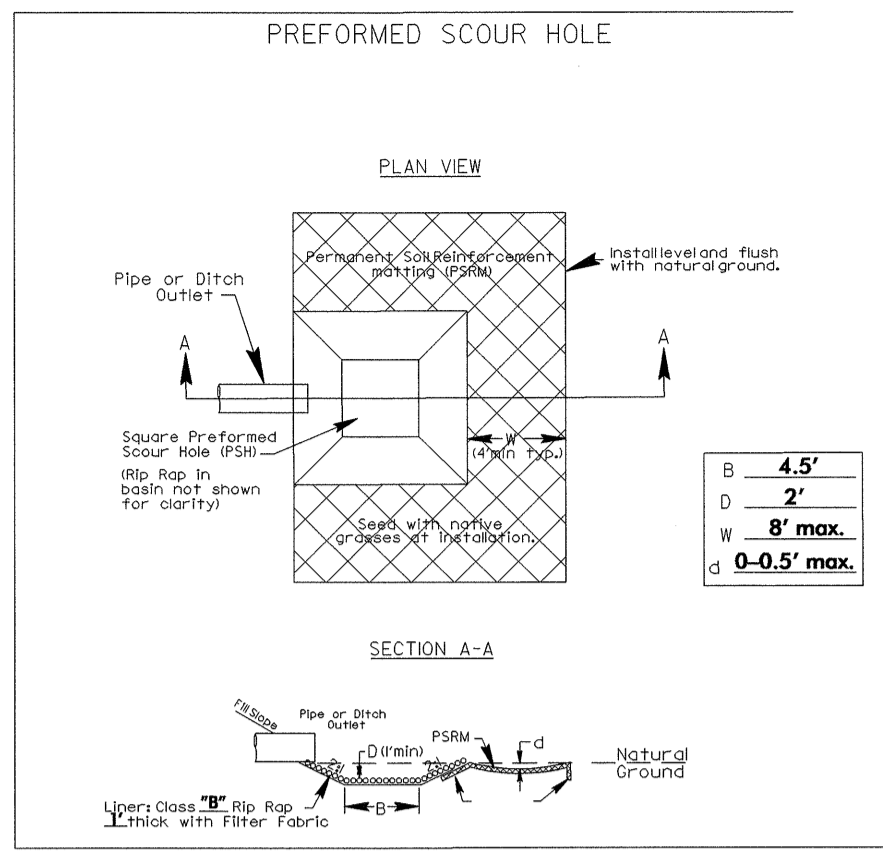
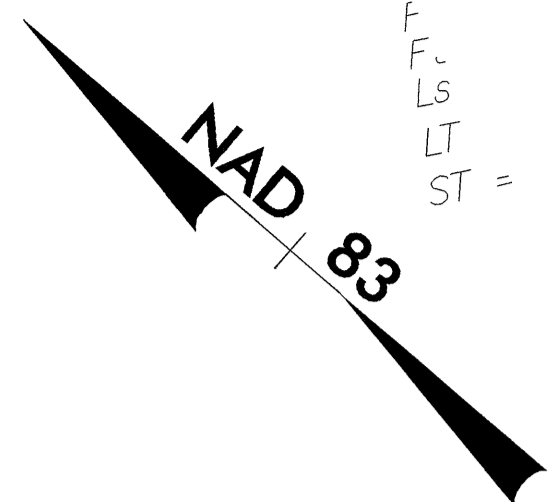


UTILITIES BY OTHERS

NOTE:
ALL PROPOSED UTILITY WORK
SHOWN ON THIS SHEET WILL
BE DONE BY OTHERS

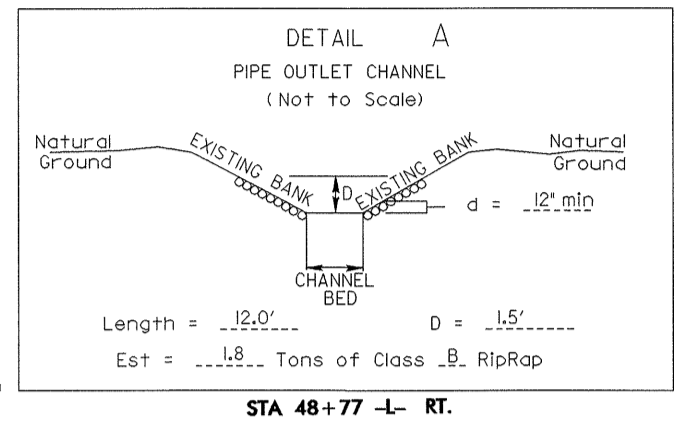


-L-
Pls Sta 48+33.92
Fs = 3'00" 56.0"
Ls = 200.00
LT = 133.35
ST = 66.68

FOR -L- PROFILE SEE SHEET 9
PSH: PREFORMED SCOUR HOLE (SEE DETAIL)
SBG: SHOULDER BERM GUTTER

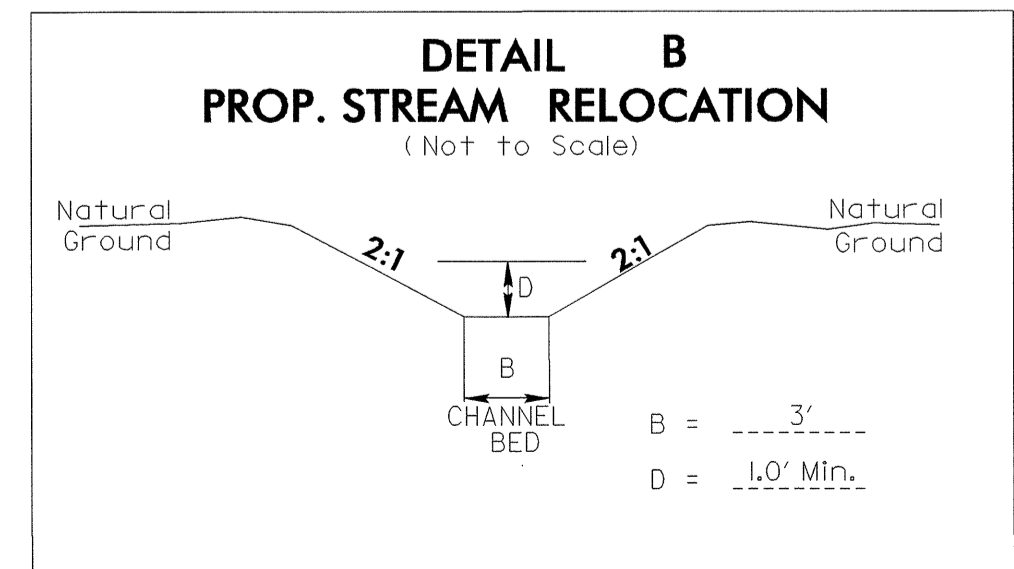
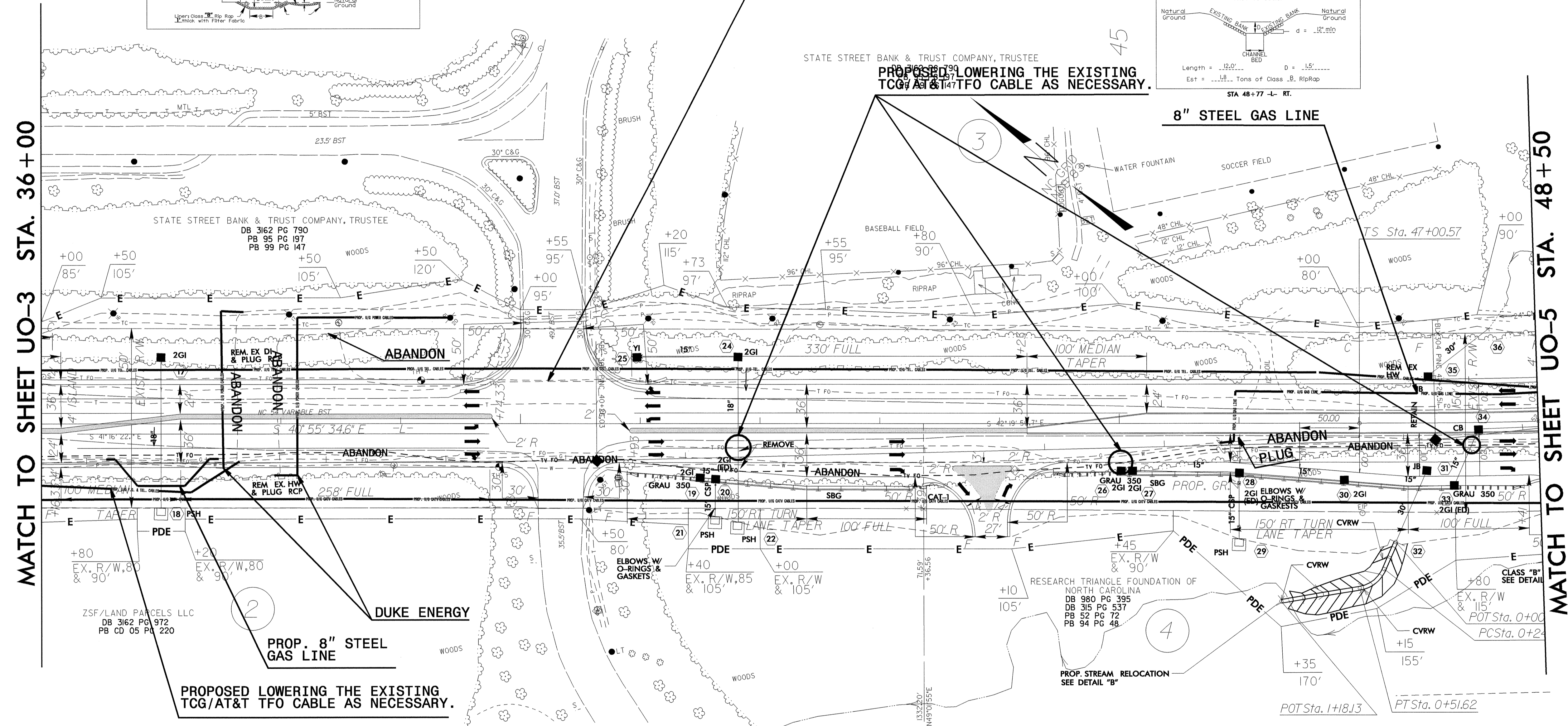
VERIZON CABLE WILL BE
REMAIN AND ADJUSTED AS NECESSARY

PROPOSED LOWERING THE EXISTING
TCG/AT&T TFO CABLE AS NECESSARY.

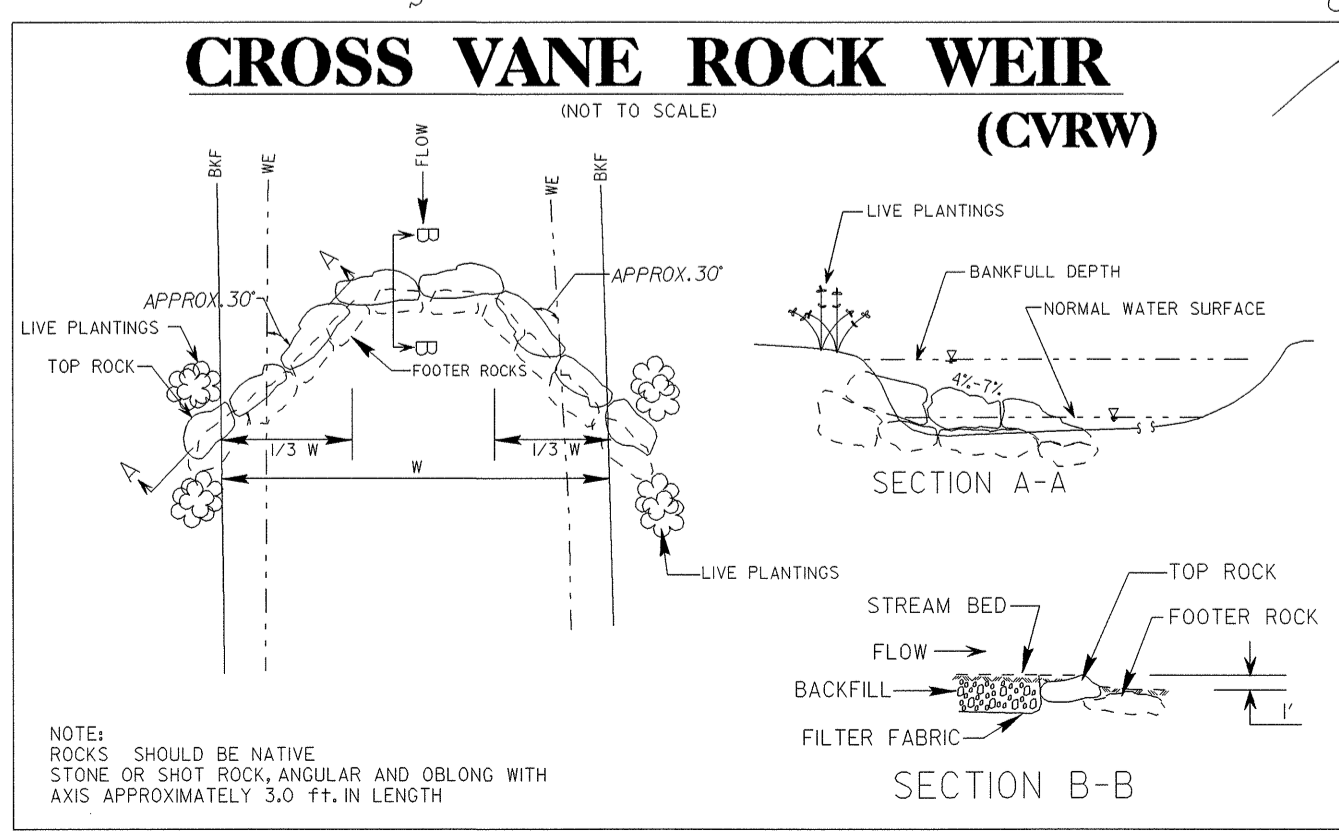


MATCH TO SHEET UO-3 STA. 36+00

MATCH TO SHEET UO-5 STA. 48+50



STA 46+30 TO 47+30 -L-



8/17/99
05-OCT-2004 11:18 U:\P\N\2904_UO4.DGN
AN Utilities vdy - USC/2/2/04