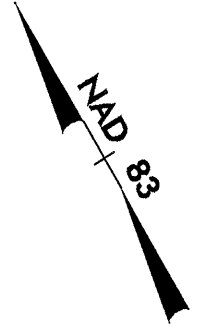
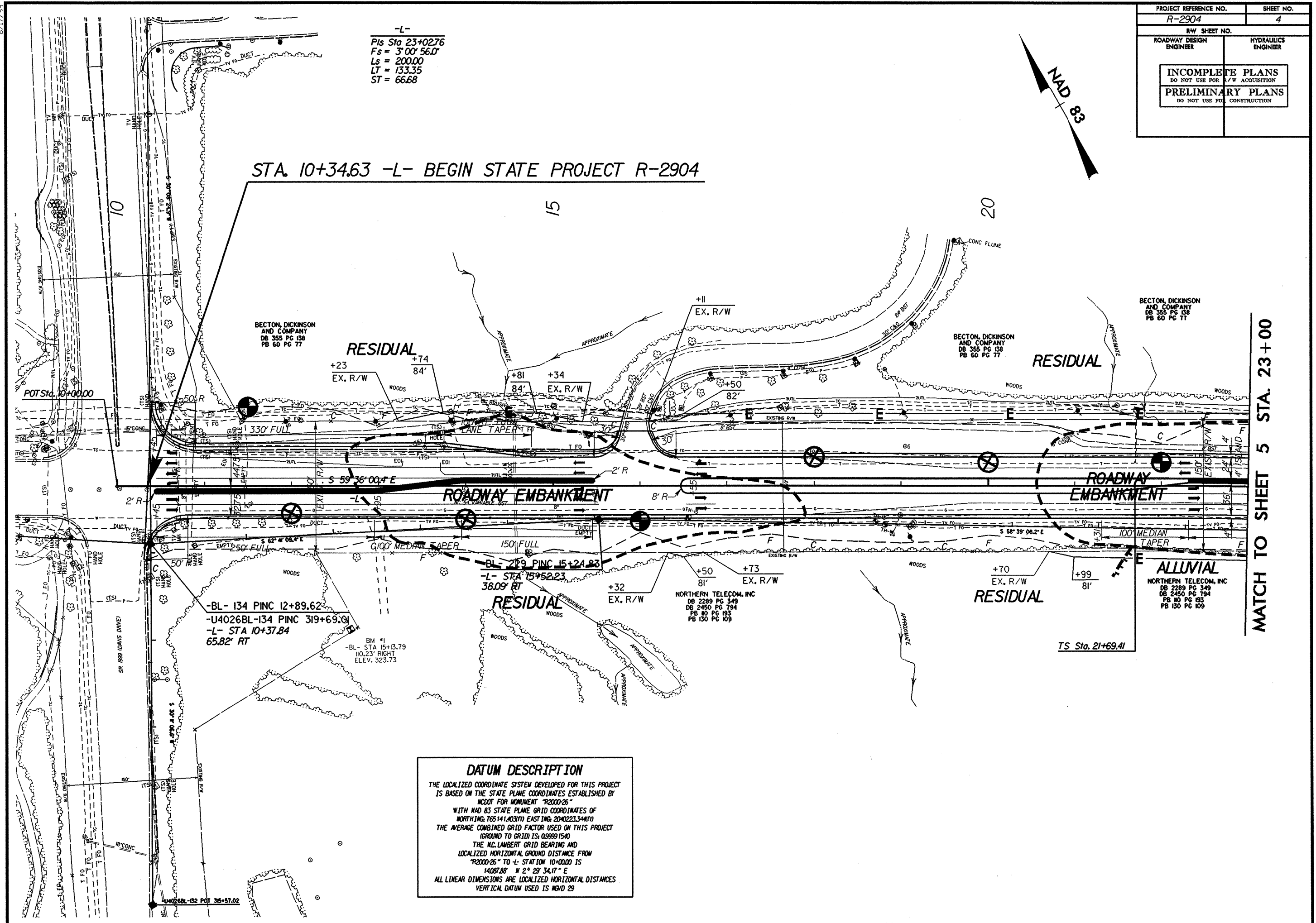


PROJECT REFERENCE NO. R-2904	SHEET NO. 4
RW SHEET NO.	
ROADWAY DESIGN ENGINEER	HYDRAULICS ENGINEER
INCOMPLETE PLANS DO NOT USE FOR R/W ACQUISITION PRELIMINARY PLANS DO NOT USE FOR CONSTRUCTION	



-L-
 PIs Sta. 23+02.76
 Fs = 3'00'56.0"
 Ls = 200.00
 LT = 133.35
 ST = 66.68

STA. 10+34.63 -L- BEGIN STATE PROJECT R-2904



MATCH TO SHEET 5 STA. 23+00

DATUM DESCRIPTION

THE LOCALIZED COORDINATE SYSTEM DEVELOPED FOR THIS PROJECT IS BASED ON THE STATE PLANE COORDINATES ESTABLISHED BY NCDD FOR MONUMENT "R2000-26" WITH NAD 83 STATE PLANE GRID COORDINATES OF NORTHING: 765141.403(11) EASTING: 2040223.344(11) THE AVERAGE COMBINED GRID FACTOR USED ON THIS PROJECT (GROUND TO GRID) IS: 0.99991540 THE N.C. LAMBERT GRID BEARING AND LOCALIZED HORIZONTAL GROUND DISTANCE FROM "R2000-26" TO -L- STATION 10+00.00 IS 14087.88' N 2° 27' 34.17" E ALL LINEAR DIMENSIONS ARE LOCALIZED HORIZONTAL DISTANCES VERTICAL DATUM USED IS MVD 29