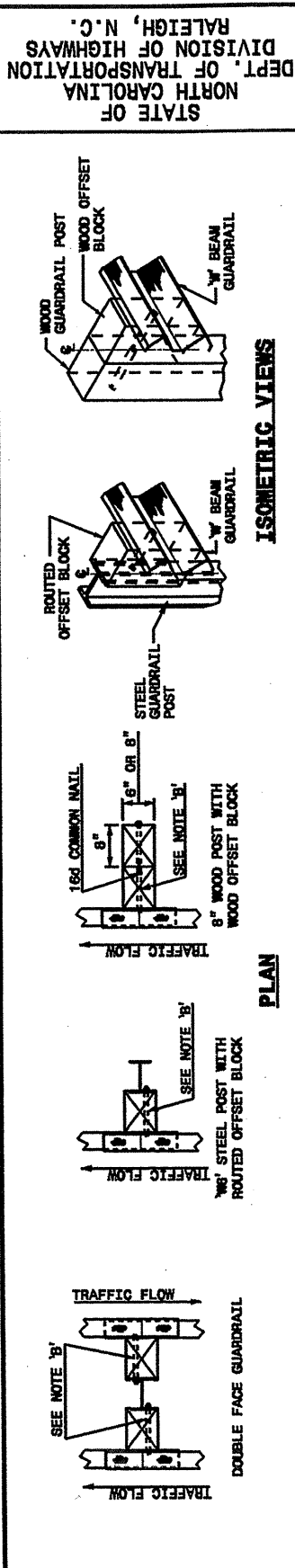
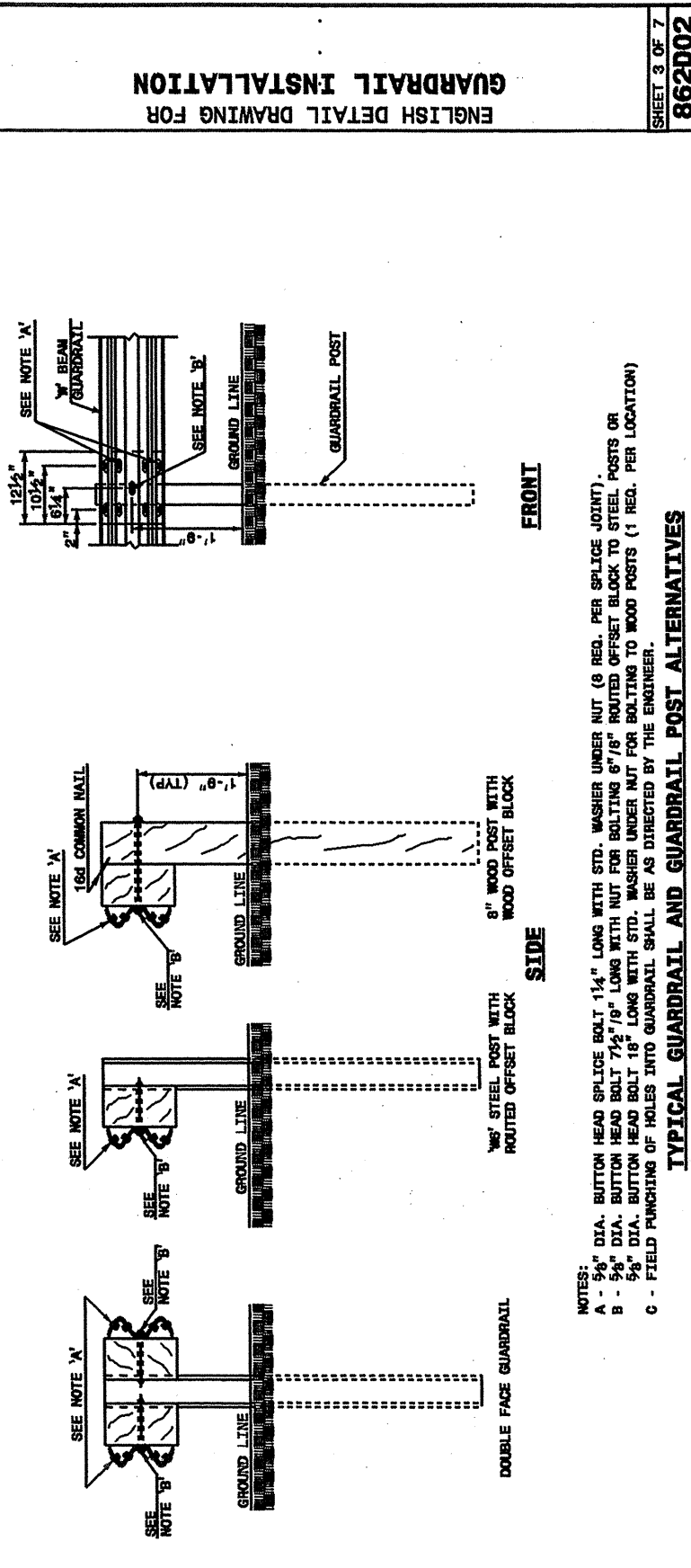


30-JUN-2003 10:35  
 W:\Special Details\stds\02\Stds to Special Details\english\86202\086202.dgn  
 er.tward  
 At DS21266  
 5/14/99

STATE OF  
 NORTH CAROLINA  
 DEPT. OF TRANSPORTATION  
 DIVISION OF HIGHWAYS  
 RALEIGH, N.C.



ENGLISH DETAIL DRAWING FOR  
 GUARDRAIL INSTALLATION



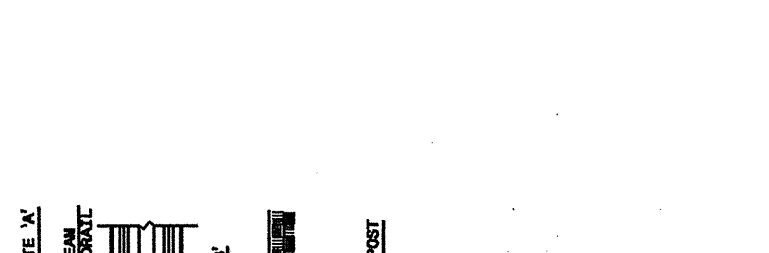
SHEET 3 OF 7  
 862D02

NOTES:  
 A - 9/8" DIA. BUTTON HEAD SPALICE BOLT 1 1/4" LONG WITH STD. WASHER UNDER NUT (8 REQ. PER SPALICE JOINT).  
 B - 9/8" DIA. BUTTON HEAD BOLT 7 1/2" LONG WITH NUT FOR BOLTING 8" X 8" ROUTED OFFSET BLOCK TO STEEL POSTS OR  
 C - 5/8" DIA. BUTTON HEAD BOLT 18" LONG WITH STD. WASHER UNDER NUT FOR BOLTING TO WOOD POSTS (1 REQ. PER LOCATION)  
 C - FIELD PUNCHING OF HOLES INTO GUARDRAIL SHALL BE AS DIRECTED BY THE ENGINEER.

TYPICAL GUARDRAIL AND GUARDRAIL POST ALTERNATIVES

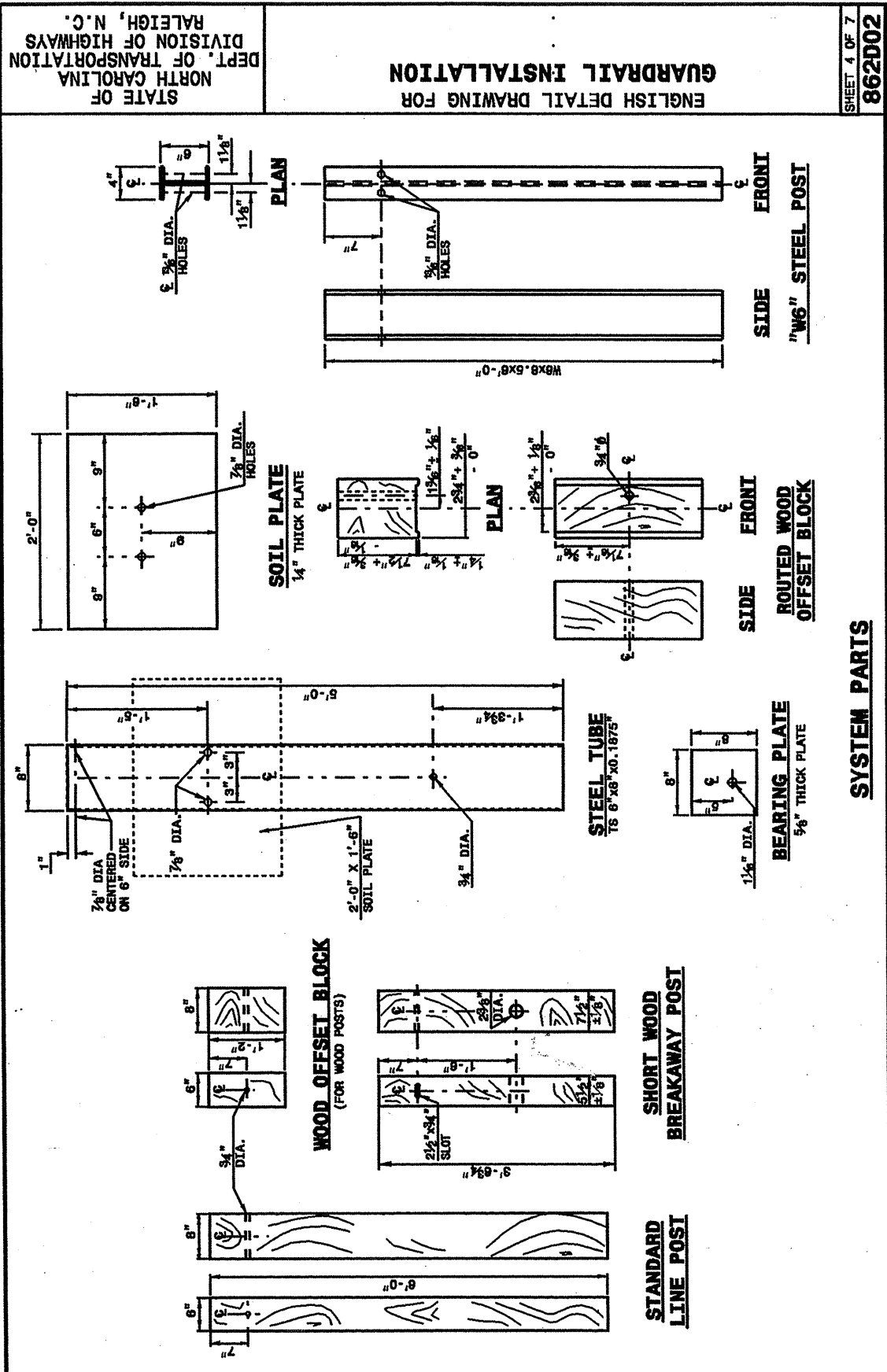
STATE OF  
 NORTH CAROLINA  
 DEPT. OF TRANSPORTATION  
 DIVISION OF HIGHWAYS  
 RALEIGH, N.C.

ENGLISH DETAIL DRAWING FOR  
 GUARDRAIL INSTALLATION



SHEET 3 OF 7  
 862D02

STATE OF  
 NORTH CAROLINA  
 DEPT. OF TRANSPORTATION  
 DIVISION OF HIGHWAYS  
 RALEIGH, N.C.



ENGLISH DETAIL DRAWING FOR  
 GUARDRAIL INSTALLATION

SHEET 4 OF 7  
 862D02

SYSTEM PARTS

DESIGN SERVICES UNIT  
 STANDARDS AND SPECIAL DESIGN  
 Office 919-250-4128 FAX 919-250-4119

SEE PLATE FOR TITLE

ORIGINAL BY: 2002 STD. 802.02 DATE:  
 MODIFIED BY: E.E. WARD DATE: 02-08-03  
 CHECKED BY: E.E. WARD DATE: 7-03  
 FILE SPEC.: W:\Special Details\stds\02\Stds to Special Details\english\86202\086202.dgn