

ALL WATER LINES OWNED BY DAVIDSON WATER INC.

PROP. 219M OF 200MM DI WATER PIPE, PC 2.41 MPA WP
 2 - 200MM 22 1/2° DI BENDS
 2 - 200MM 11 1/4° DI BENDS
 CONNECT USING NECESSARY FITTINGS

PROP. 1 - 200MM TRANSITION COUPLING (AC - DI)

PROP. 224M - FILL OR REMOVE ABANDONED 200MM PIPE, AC WATER

PROP. 2 - RELOCATE EXISTING WATER METER
 2 - 200MM X 20MM TAPPING SADDLE
 2 - 20MM CORPORATION STOP
 32M OF 20MM COPPER WATER PIPE, TYPE K
 CONNECT USING NECESSARY FITTINGS

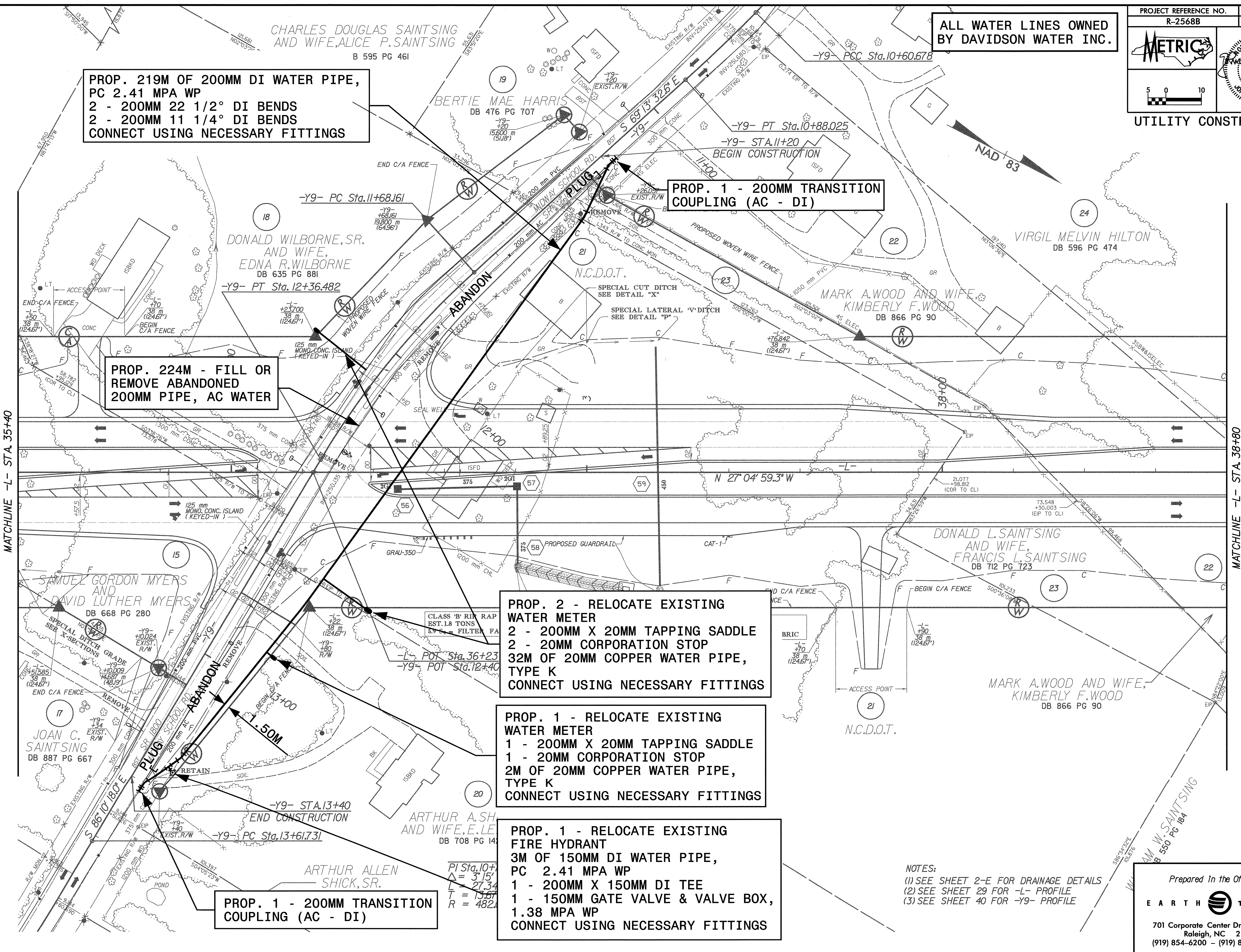
PROP. 1 - RELOCATE EXISTING WATER METER
 1 - 200MM X 20MM TAPPING SADDLE
 1 - 20MM CORPORATION STOP
 2M OF 20MM COPPER WATER PIPE, TYPE K
 CONNECT USING NECESSARY FITTINGS

PROP. 1 - RELOCATE EXISTING FIRE HYDRANT
 3M OF 150MM DI WATER PIPE, PC 2.41 MPA WP
 1 - 200MM X 150MM DI TEE
 1 - 150MM GATE VALVE & VALVE BOX, 1.38 MPA WP
 CONNECT USING NECESSARY FITTINGS

PROP. 1 - 200MM TRANSITION COUPLING (AC - DI)

NOTES:
 (1) SEE SHEET 2-E FOR DRAINAGE DETAILS
 (2) SEE SHEET 29 FOR -L- PROFILE
 (3) SEE SHEET 40 FOR -Y9- PROFILE

Prepared In the Office of:
EARTH TECH
 701 Corporate Center Drive, Suite 475
 Raleigh, NC 27607
 (919) 854-6200 - (919) 854-6259(FAX)



06/16/2004 10:25:28 AM R:\2568B\2568B.dwg
 06/16/2004 10:25:28 AM R:\2568B\2568B.dwg
 06/16/2004 10:25:28 AM R:\2568B\2568B.dwg