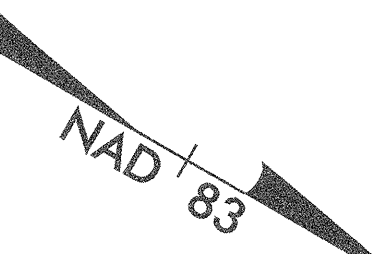


ALL WATER LINES OWNED BY DAVIDSON WATER INC.



PROP. 337M OF 200MM DI WATER PIPE, PC 2.41 MPA WP  
 2 - 200MM GATE VALVE & VALVE BOX, 1.38 MPA WP  
 1 - 200MM X 150MM DI TEE  
 1 - 200MM DI PLUG  
 1 - 150MM GATE VALVE & VALVE BOX, 1.38 MPA WP  
 8M OF 150MM PVC WATER PIPE, SDR 21, 1.38 MPA WP  
 2 - 150MM 45° DI BENDS  
 CONNECT USING NECESSARY FITTINGS

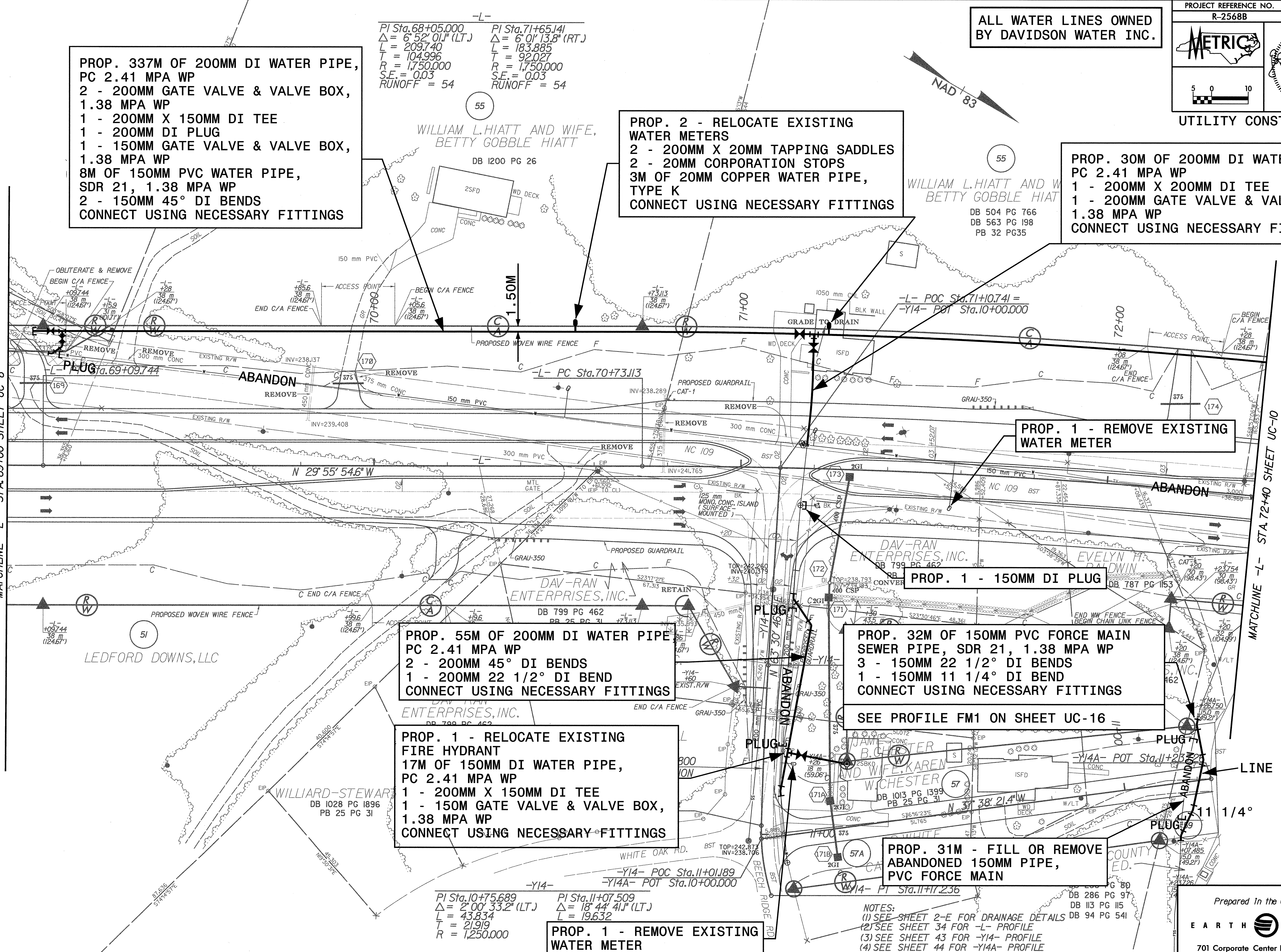
-L-  
 PI Sta.68+05.000 Δ = 6° 52' 01.1" (LT.) L = 209.740 T = 104.996 R = 1,750.000 S.E. = 0.03 RUNOFF = 54  
 PI Sta.71+65.141 Δ = 6° 01' 13.8" (RT.) L = 183.885 T = 92.027 R = 1,750.000 S.E. = 0.03 RUNOFF = 54

PROP. 2 - RELOCATE EXISTING WATER METERS  
 2 - 200MM X 20MM TAPPING SADDLES  
 2 - 20MM CORPORATION STOPS  
 3M OF 20MM COPPER WATER PIPE, TYPE K  
 CONNECT USING NECESSARY FITTINGS

PROP. 30M OF 200MM DI WATER PIPE, PC 2.41 MPA WP  
 1 - 200MM X 200MM DI TEE  
 1 - 200MM GATE VALVE & VALVE BOX, 1.38 MPA WP  
 CONNECT USING NECESSARY FITTINGS

MATCHLINE -L- STA 69+00 SHEET UC-8

MATCHLINE -L- STA 72+40 SHEET UC-10



PROP. 55M OF 200MM DI WATER PIPE, PC 2.41 MPA WP  
 2 - 200MM 45° DI BENDS  
 1 - 200MM 22 1/2° DI BEND  
 CONNECT USING NECESSARY FITTINGS

PROP. 32M OF 150MM PVC FORCE MAIN SEWER PIPE, SDR 21, 1.38 MPA WP  
 3 - 150MM 22 1/2° DI BENDS  
 1 - 150MM 11 1/4° DI BEND  
 CONNECT USING NECESSARY FITTINGS

PROP. 1 - RELOCATE EXISTING FIRE HYDRANT  
 17M OF 150MM DI WATER PIPE, PC 2.41 MPA WP  
 1 - 200MM X 150MM DI TEE  
 1 - 150MM GATE VALVE & VALVE BOX, 1.38 MPA WP  
 CONNECT USING NECESSARY FITTINGS

SEE PROFILE FM1 ON SHEET UC-16

PROP. 1 - REMOVE EXISTING WATER METER

PROP. 31M - FILL OR REMOVE ABANDONED 150MM PIPE, PVC FORCE MAIN

NOTES:  
 (1) SEE SHEET 2-E FOR DRAINAGE DETAILS  
 (2) SEE SHEET 34 FOR -L- PROFILE  
 (3) SEE SHEET 43 FOR -Y14- PROFILE  
 (4) SEE SHEET 44 FOR -Y14A- PROFILE

03/17/05 2:56:11 PM 2568B UC-9.dwg