

ALL WATER LINES OWNED
BY DAVIDSON WATER INC.

-Y12-
 PI Sta. 11+36.157 PI Sta. 12+28.334
 $\Delta = 1' 13' 48.7''$ (RT.) $\Delta = 8' 05' 58.2''$ (RT.)
 L = 62.513 L = 121.641
 T = 31.258 T = 60.922
 R = 2,911.508 R = 860.484
 S.E. = NC

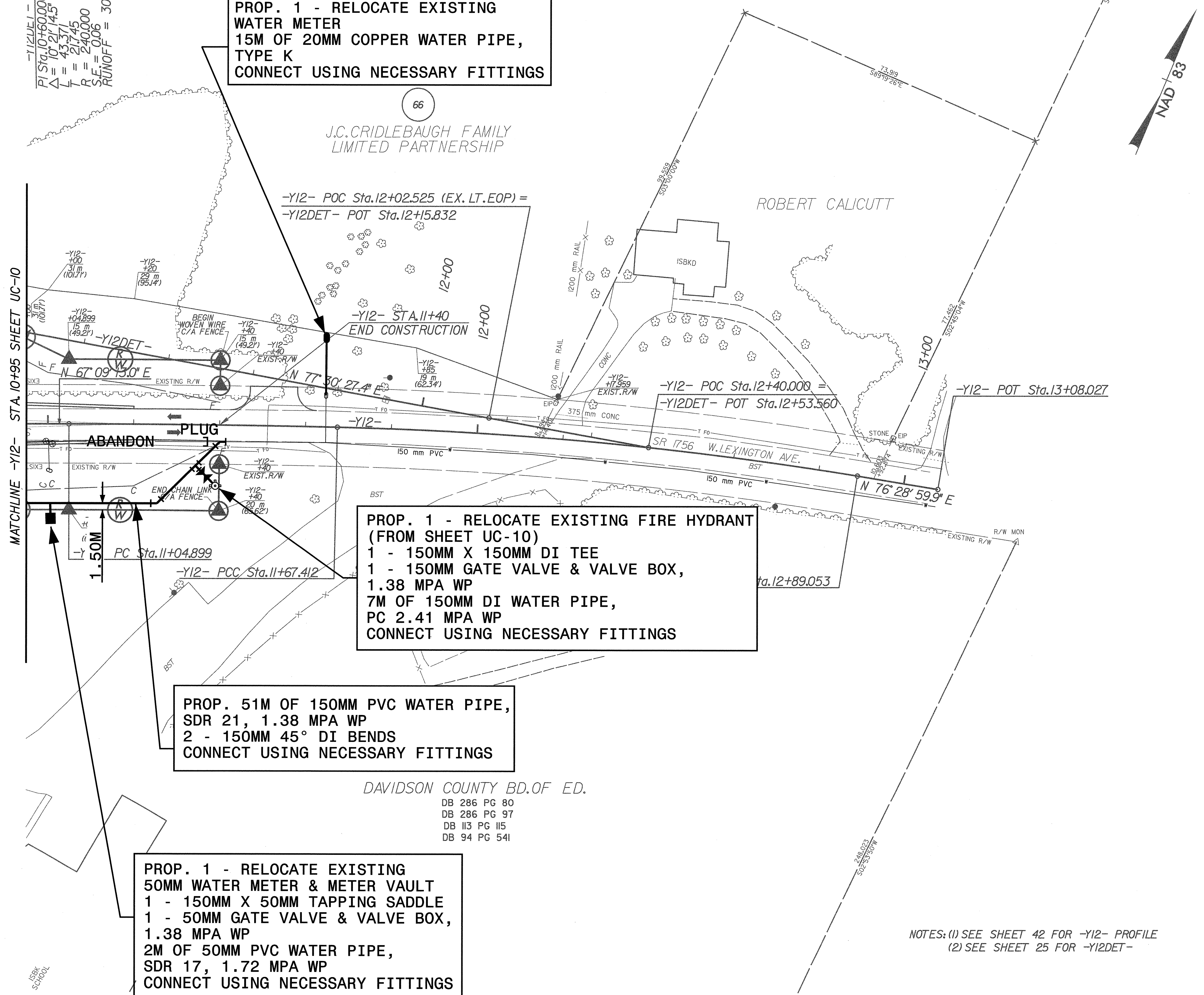
-Y12-
 PI Sta. 10+60.000
 $\Delta = 10' 21' 14.5''$ (RT.)
 L = 43.715
 T = 21.745
 R = 240.000
 S.E. = 0.06
 RUNOFF = 30

PROP. 1 - RELOCATE EXISTING
WATER METER
15M OF 20MM COPPER WATER PIPE,
TYPE K
CONNECT USING NECESSARY FITTINGS

PROP. 1 - RELOCATE EXISTING FIRE HYDRANT
(FROM SHEET UC-10)
1 - 150MM X 150MM DI TEE
1 - 150MM GATE VALVE & VALVE BOX,
1.38 MPA WP
7M OF 150MM DI WATER PIPE,
PC 2.41 MPA WP
CONNECT USING NECESSARY FITTINGS

PROP. 51M OF 150MM PVC WATER PIPE,
SDR 21, 1.38 MPA WP
2 - 150MM 45° DI BENDS
CONNECT USING NECESSARY FITTINGS

PROP. 1 - RELOCATE EXISTING
50MM WATER METER & METER VAULT
1 - 150MM X 50MM TAPPING SADDLE
1 - 50MM GATE VALVE & VALVE BOX,
1.38 MPA WP
2M OF 50MM PVC WATER PIPE,
SDR 17, 1.72 MPA WP
CONNECT USING NECESSARY FITTINGS



DAVIDSON COUNTY BD. OF ED.
 DB 286 PG 80
 DB 286 PG 97
 DB 113 PG 115
 DB 94 PG 541

NOTES: (1) SEE SHEET 42 FOR -Y12- PROFILE
 (2) SEE SHEET 25 FOR -Y12DET-

Prepared In the Office of:
EARTH TECH
 701 Corporate Center Drive, Suite 475
 Raleigh, NC 27607
 (919) 854-6200 - (919) 854-6259(FAX)

88\76495\2568btemp\p10\2568buc 15.psh
 08/03/2004 01:04:31 PM