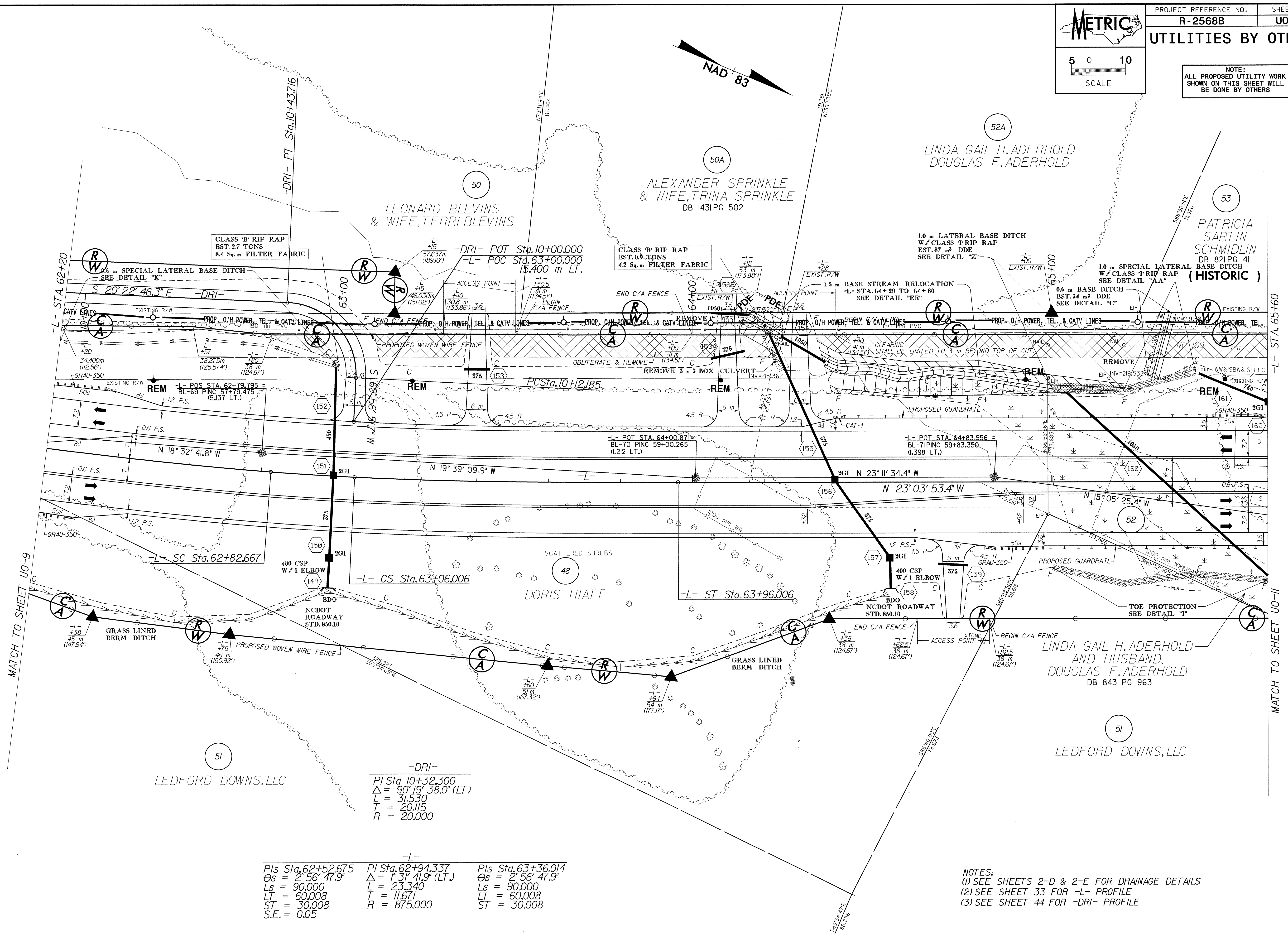
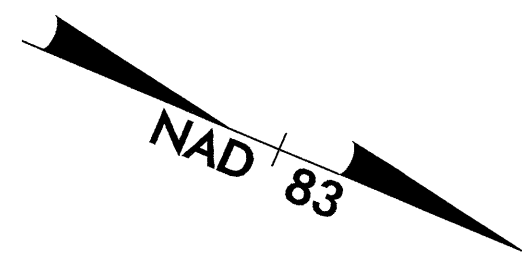


PROJECT REFERENCE NO. SHEET NO.

R-2568B UO-10

UTILITIES BY OTHERS

NOTE:  
ALL PROPOSED UTILITY WORK  
SHOWN ON THIS SHEET WILL  
BE DONE BY OTHERS



MATCH TO SHEET UO-9

MATCH TO SHEET UO-11

-DRI-

PI Sta 10+32.300  
 $\Delta = 90^\circ 19' 38.0''$  (LT.)  
 L = 31,530  
 T = 20,115  
 R = 20,000

-L-

Pls Sta. 62+52.675	PI Sta. 62+94.337	Pls Sta. 63+36.014
$\Delta s = 2^\circ 56' 47.9''$	$\Delta = 1^\circ 31' 41.9''$ (LT.)	$\Delta s = 2^\circ 56' 47.9''$
Ls = 90,000	L = 23,340	Ls = 90,000
LT = 60,008	T = 11,671	LT = 60,008
ST = 30,008	R = 875,000	ST = 30,008
S.E. = 0.05		

NOTES:  
 (1) SEE SHEETS 2-D & 2-E FOR DRAINAGE DETAILS  
 (2) SEE SHEET 33 FOR -L- PROFILE  
 (3) SEE SHEET 44 FOR -DRI- PROFILE

19-AUG-2004 09:58  
 R:\AUG-2004\0958  
 R-2568B.ut.16.1010.ppk.dgn  
 16822222