

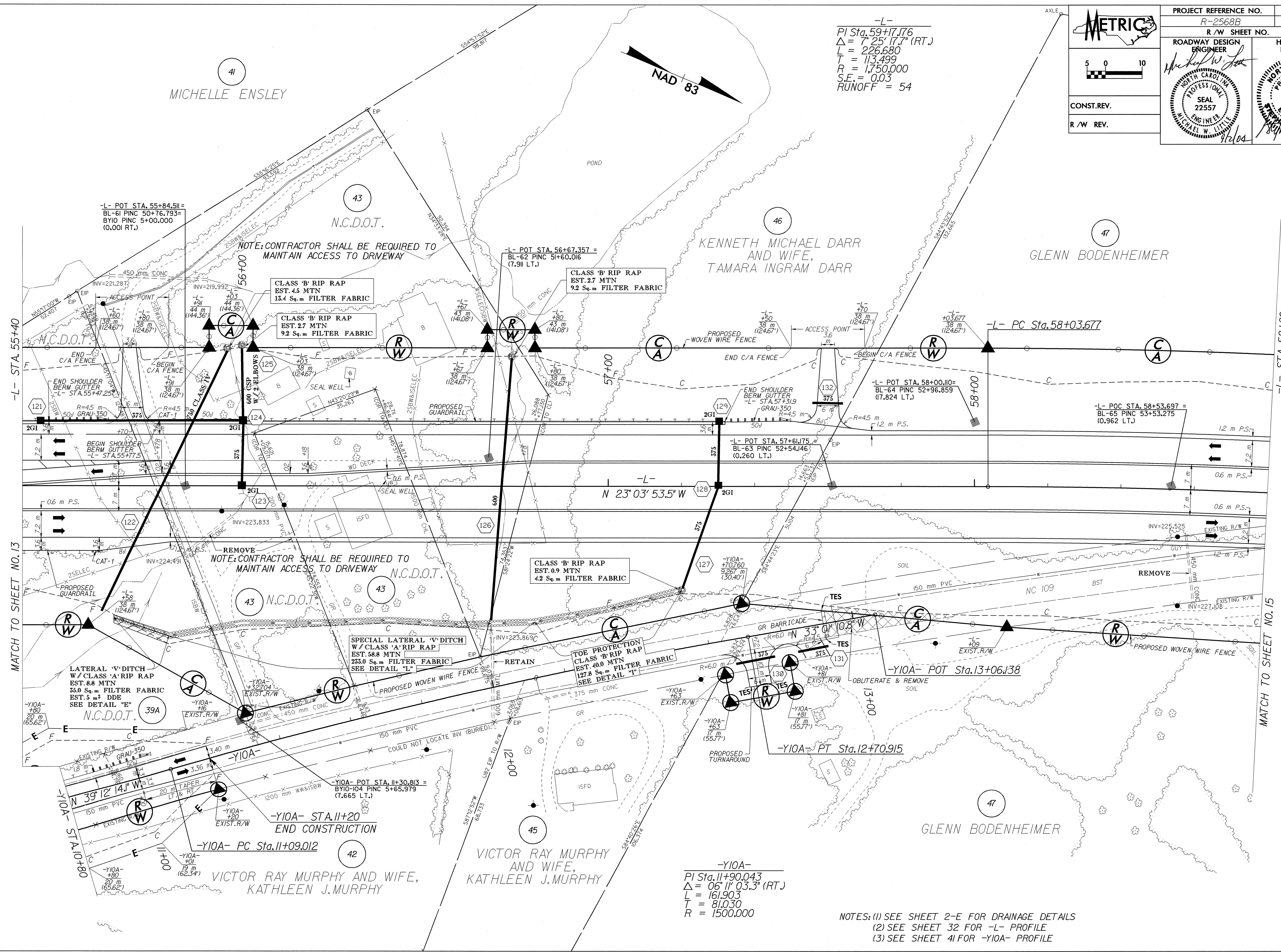
8/17/09

METRIC

CONST. REV.
R/W REV.

PROJECT REFERENCE NO. R-2568B	SHEET NO. 14
R/W SHEET NO. 14	HYDRAULICS ENGINEER
ROADWAY DESIGN ENGINEER <i>Michael W. J...</i>	SEAL 22557
PROFESSIONAL ENGINEER MICHAEL W. J...	SEAL 22100
4/2/04	4/2/04

-L-
PI Sta. 59+17.176
 $\Delta = 7' 25" 17.7" (RT.)$
L = 226.680
T = 113.499
R = 1,750.000
S.E. = 0.03
RUNOFF = 54



REVISIONS

-L- STA. 55+40

MATCH TO SHEET NO. 13

-L- STA. 58+80

MATCH TO SHEET NO. 15

02-SEP-2004 08:16

-Y10A-
PI Sta. 11+90.043
 $\Delta = 06' 11" 03.3" (RT.)$
L = 161.903
T = 81.030
R = 1500.000

NOTES: (1) SEE SHEET 2-E FOR DRAINAGE DETAILS
(2) SEE SHEET 32 FOR -L- PROFILE
(3) SEE SHEET 41 FOR -Y10A- PROFILE