

METRIC

PROJECT REFERENCE NO. R-2568B SHEET NO. 16
 R/W SHEET NO. 16

ROADWAY DESIGN ENGINEER
 HYDRAULICS ENGINEER

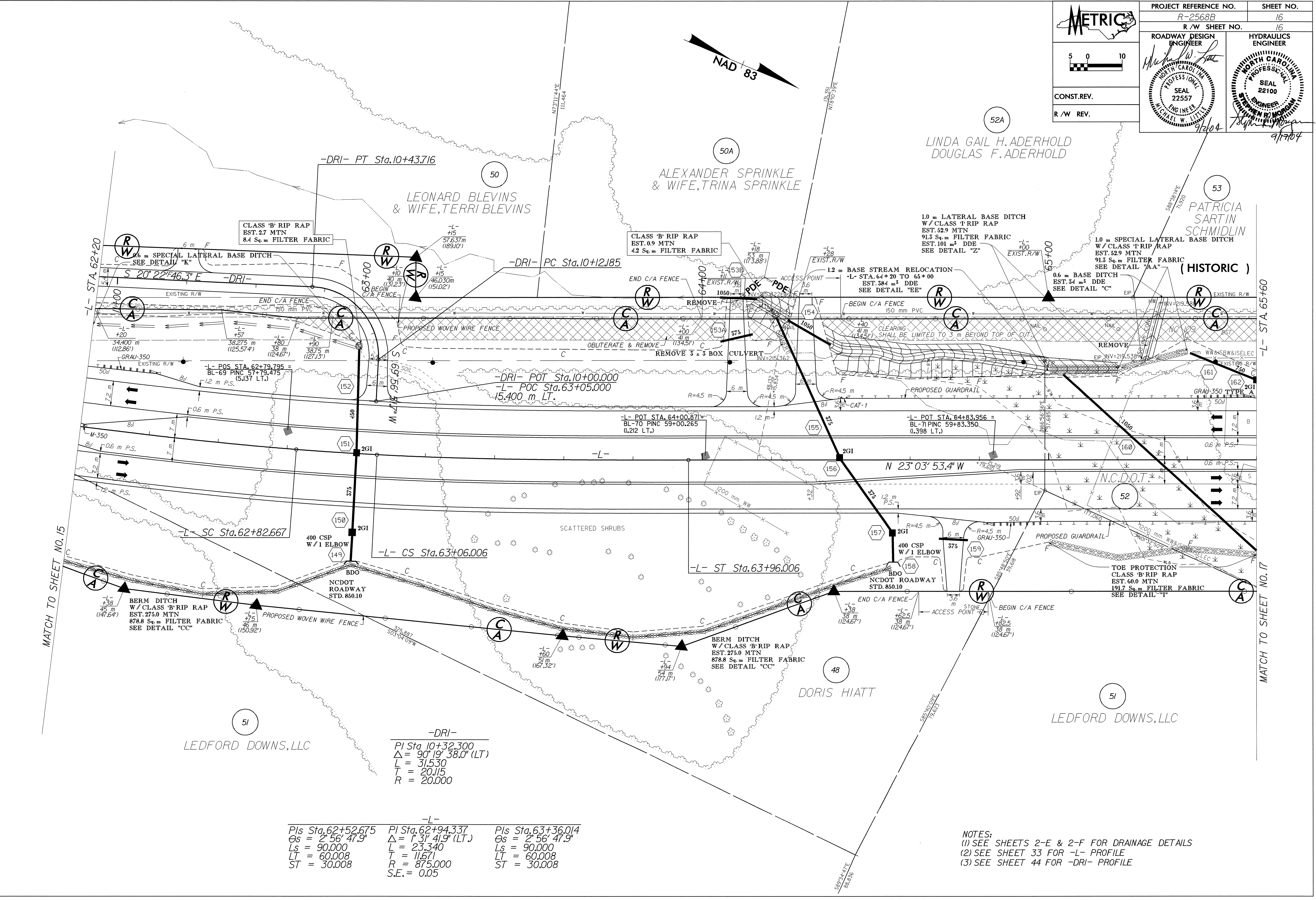
CONST. REV.
 R/W REV.

SEAL 22557
 SEAL 22100

8/17/2018

REVISIONS

8-SEP-2008 08:51 AM



MATCH TO SHEET NO. 15

MATCH TO SHEET NO. 17

-DRI-
 PI Sta. 10+32.300
 $\Delta = 90^{\circ} 19' 38.0''$ (LT.)
 L = 315.30
 T = 20.115
 R = 20.000

-L- PIs Sta. 62+52.675 Os = 2° 56' 47.9" Ls = 90.000 LT = 60.008 ST = 30.008	PI Sta. 62+94.337 $\Delta = 1^{\circ} 31' 41.9''$ (LT.) L = 23.340 T = 11.671 R = 875.000 S.E. = 0.05	PIs Sta. 63+36.014 Os = 2° 56' 47.9" Ls = 90.000 LT = 60.008 ST = 30.008
---	--	--

NOTES:
 (1) SEE SHEETS 2-E & 2-F FOR DRAINAGE DETAILS
 (2) SEE SHEET 33 FOR -L- PROFILE
 (3) SEE SHEET 44 FOR -DRI- PROFILE