

METRIC

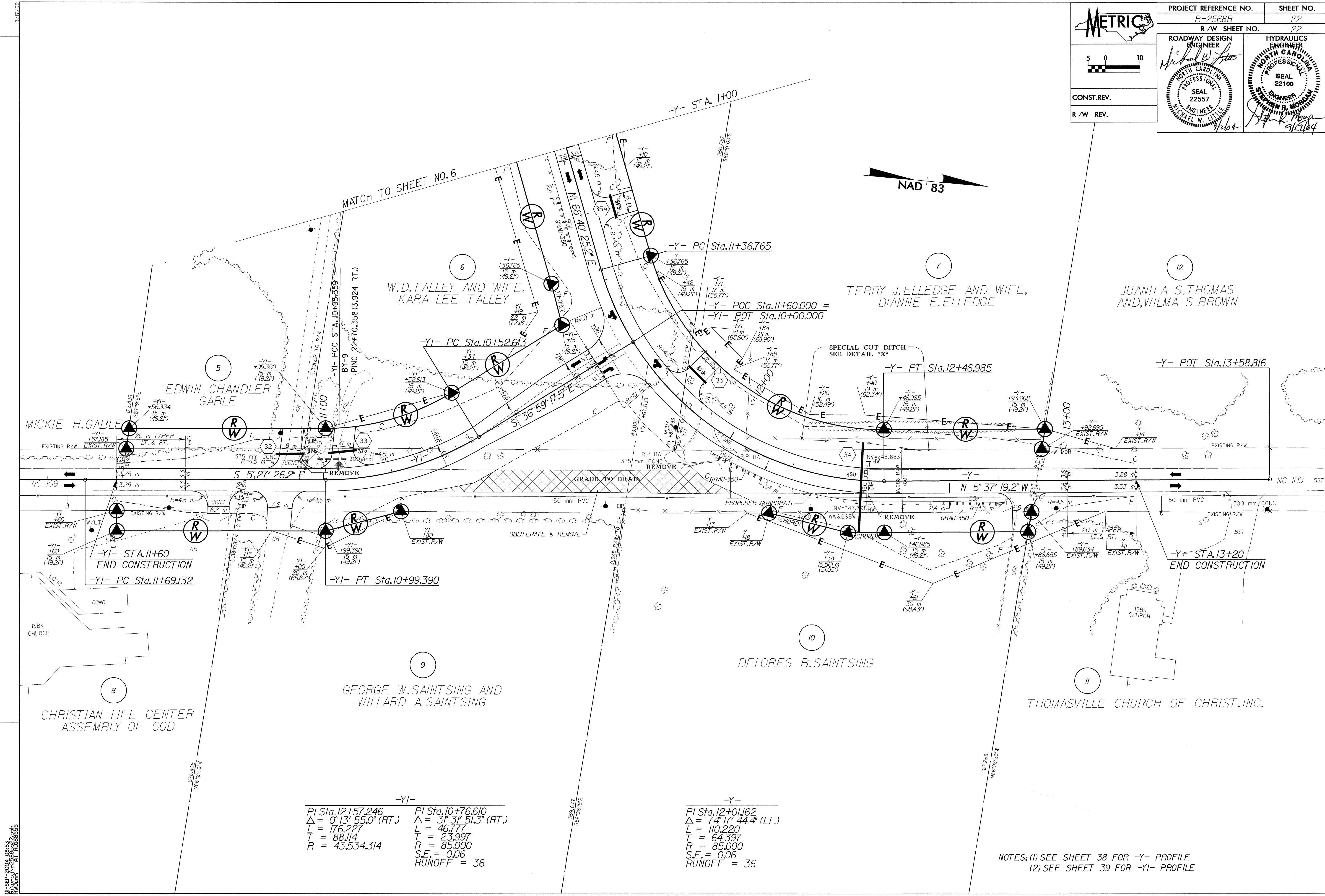
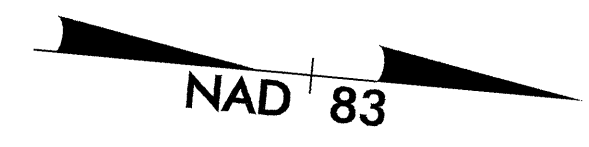
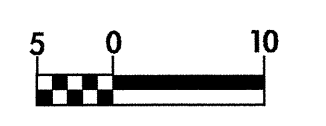
PROJECT REFERENCE NO. R-2568B SHEET NO. 22
 R/W SHEET NO. 22

ROADWAY DESIGN ENGINEER
 HYDRAULICS ENGINEER

CONST. REV.
 R/W REV.

Professional Engineer Seal: MICHAEL W. LITTLE, SEAL 22557, ENGINEER, NORTH CAROLINA PROFESSIONAL SEAL 22100

Professional Engineer Seal: STEPHEN R. MORGAN, SEAL 22100, ENGINEER, NORTH CAROLINA PROFESSIONAL SEAL 22100



REVISIONS

BY: SEP 2006, GRS
 R/W: 08/21/06, R/W

-YI-	-Y-
PI Sta. 12+57.246	PI Sta. 10+76.610
$\Delta = 0^{\circ} 13' 55.0"$ (RT.)	$\Delta = 31^{\circ} 31' 51.3"$ (RT.)
L = 176.227	L = 46.777
T = 88.114	T = 23.997
R = 43,534.314	R = 85,000
	S.E. = 0.06
	RUNOFF = 36

-Y-
PI Sta. 12+01.62
$\Delta = 74^{\circ} 17' 44.4"$ (LT.)
L = 110.220
T = 64.397
R = 85,000
S.E. = 0.06
RUNOFF = 36

NOTES: (1) SEE SHEET 38 FOR -Y- PROFILE
 (2) SEE SHEET 39 FOR -YI- PROFILE