


6/09/09



5 0 10

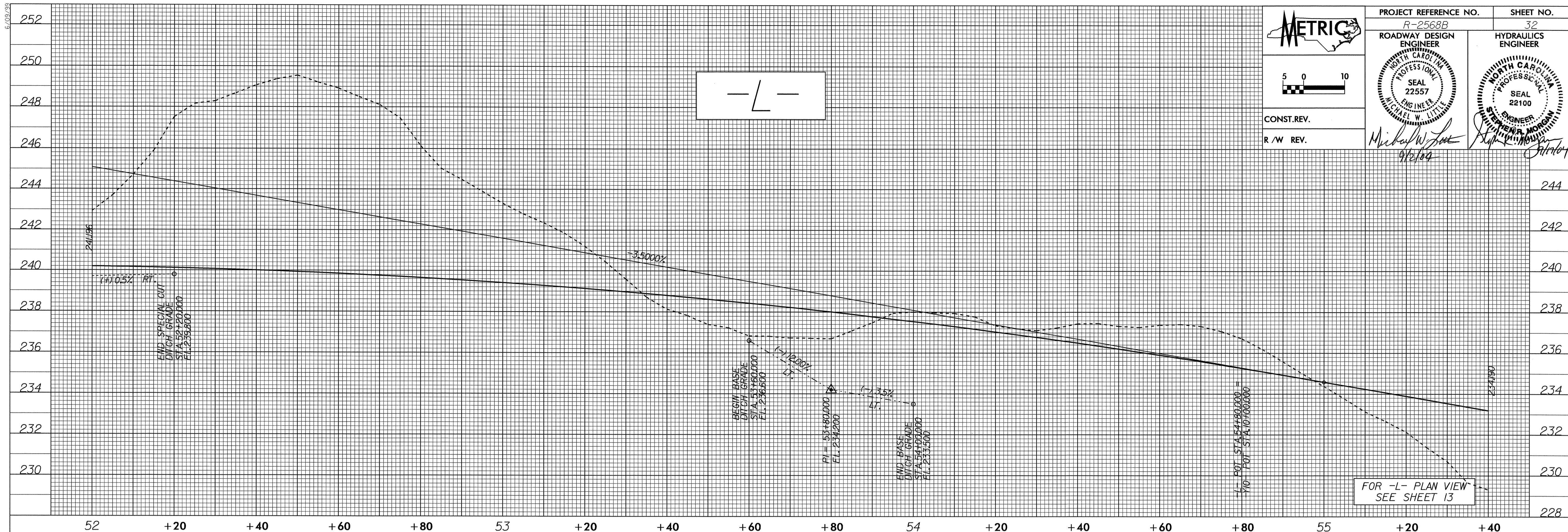
CONST. REV.  
R/W REV.

PROJECT REFERENCE NO. R-2568B  
SHEET NO. 32

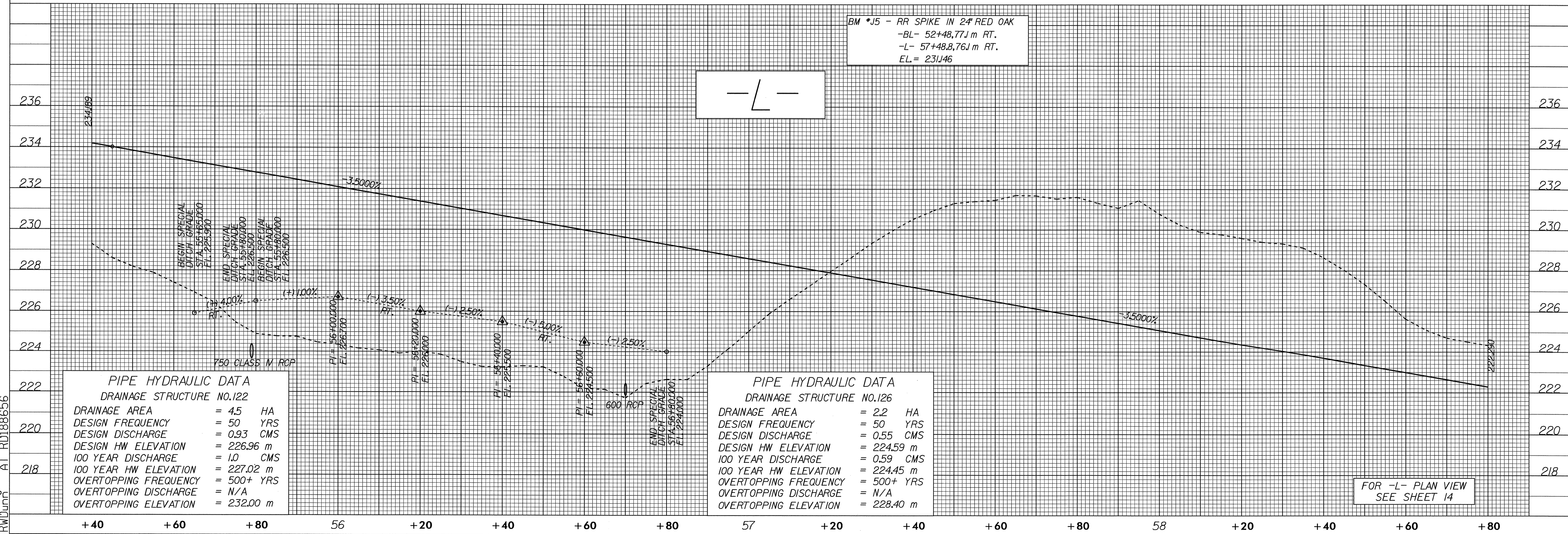
ROADWAY DESIGN ENGINEER  
MICHAEL W. LITTLE  
SEAL 22557  
NORTH CAROLINA PROFESSIONAL ENGINEER

HYDRAULICS ENGINEER  
STEVEN MORAN  
SEAL 22100  
NORTH CAROLINA PROFESSIONAL ENGINEER

Michael W. Little  
9/2/09



FOR -L- PLAN VIEW SEE SHEET 13



BM \*J5 - RR SPIKE IN 24" RED OAK  
 -BL- 52+48.771 m RT.  
 -L- 57+48.8,76J m RT.  
 EL= 231.46

PIPE HYDRAULIC DATA  
DRAINAGE STRUCTURE NO.122

DRAINAGE AREA	= 45	HA
DESIGN FREQUENCY	= 50	YRS
DESIGN DISCHARGE	= 0.93	CMS
DESIGN HW ELEVATION	= 226.96	m
100 YEAR DISCHARGE	= 1.0	CMS
100 YEAR HW ELEVATION	= 227.02	m
OVERTOPPING FREQUENCY	= 500+	YRS
OVERTOPPING DISCHARGE	= N/A	
OVERTOPPING ELEVATION	= 232.00	m

PIPE HYDRAULIC DATA  
DRAINAGE STRUCTURE NO.126

DRAINAGE AREA	= 22	HA
DESIGN FREQUENCY	= 50	YRS
DESIGN DISCHARGE	= 0.55	CMS
DESIGN HW ELEVATION	= 224.59	m
100 YEAR DISCHARGE	= 0.59	CMS
100 YEAR HW ELEVATION	= 224.45	m
OVERTOPPING FREQUENCY	= 500+	YRS
OVERTOPPING DISCHARGE	= N/A	
OVERTOPPING ELEVATION	= 228.40	m

FOR -L- PLAN VIEW SEE SHEET 14

26-JUL-2004 15:23  
 R:\proj\2568B\p1  
 RWDunn