

6/09/08

BM *J6 - RR SPIKE IN 2" RED CEDAR
-BL- 61+68.1042 m LT.
-L- 66+60.6,101.3 m LT.
EL = 228.588

-L-

PROJECT REFERENCE NO. R-2568B SHEET NO. 34

METRIC ROADWAY DESIGN ENGINEER

HYDRAULICS ENGINEER

SEAL 22557

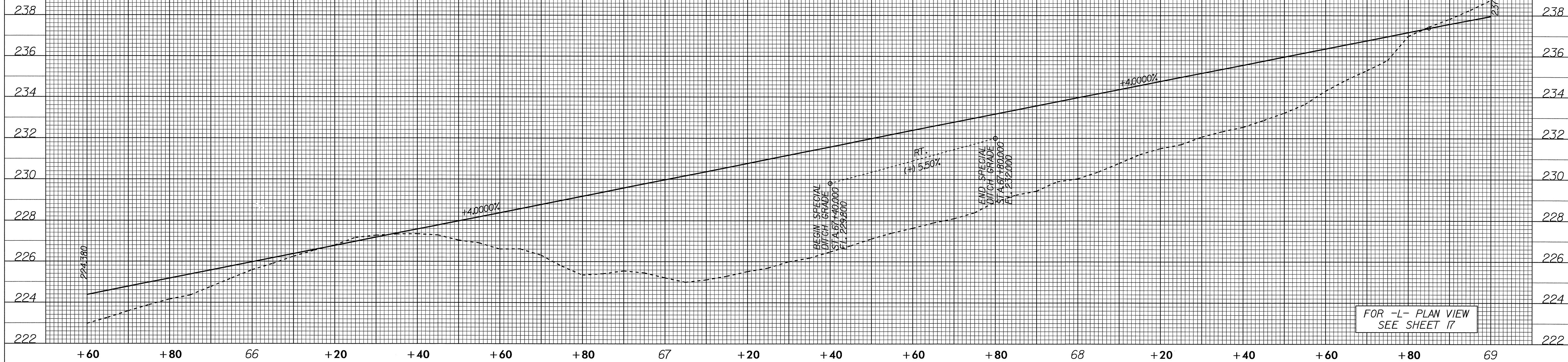
SEAL 22100

CONST.REV.

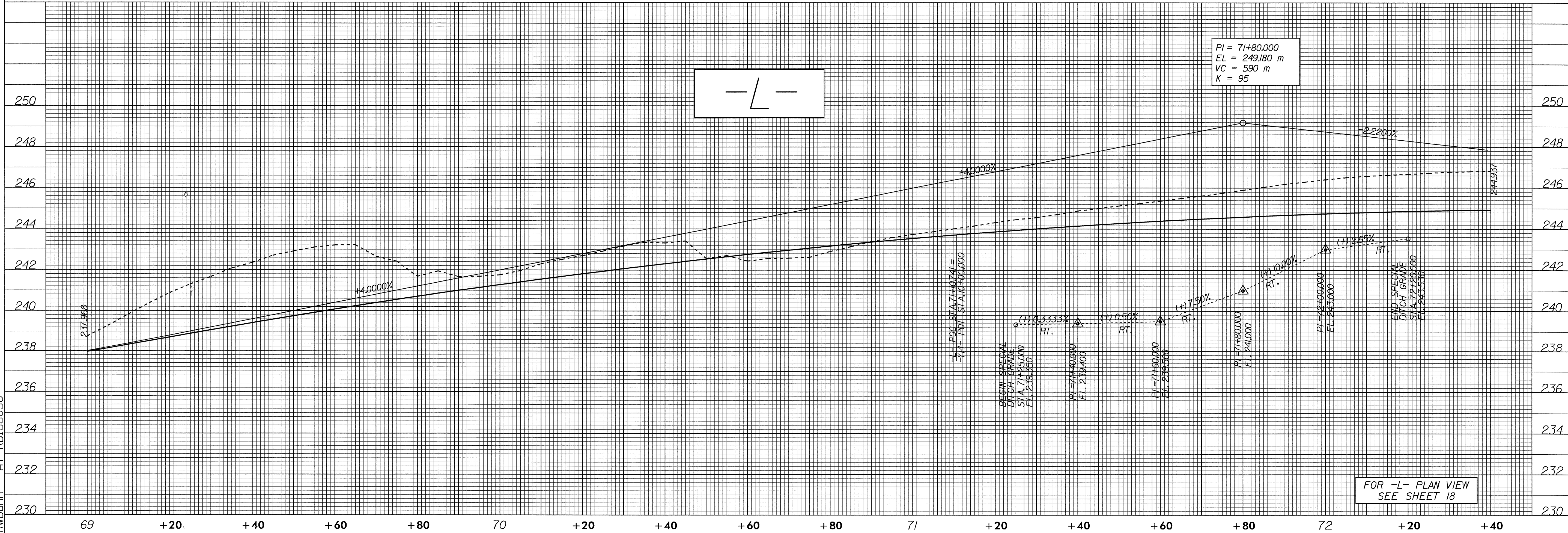
R/W REV.

Michael W. Little
9/2/08

Stephen L. Morison
9/2/08



FOR -L- PLAN VIEW
SEE SHEET 17



FOR -L- PLAN VIEW
SEE SHEET 18

03-AUG-2004 11:24
R:\proj\2568b\pl
R:\dum\AT_R0188656