

6/09/09

BM *J5 - RR SPIKE IN 2" RED OAK
-BL- 52+48.77J m RT.
-L- 57+48.8,76J m RT.
EL = 231.46

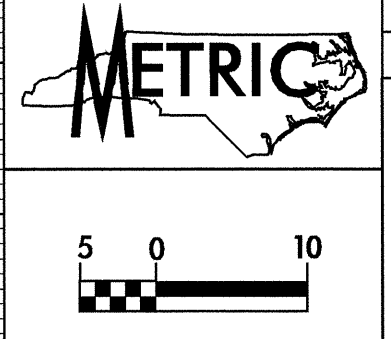
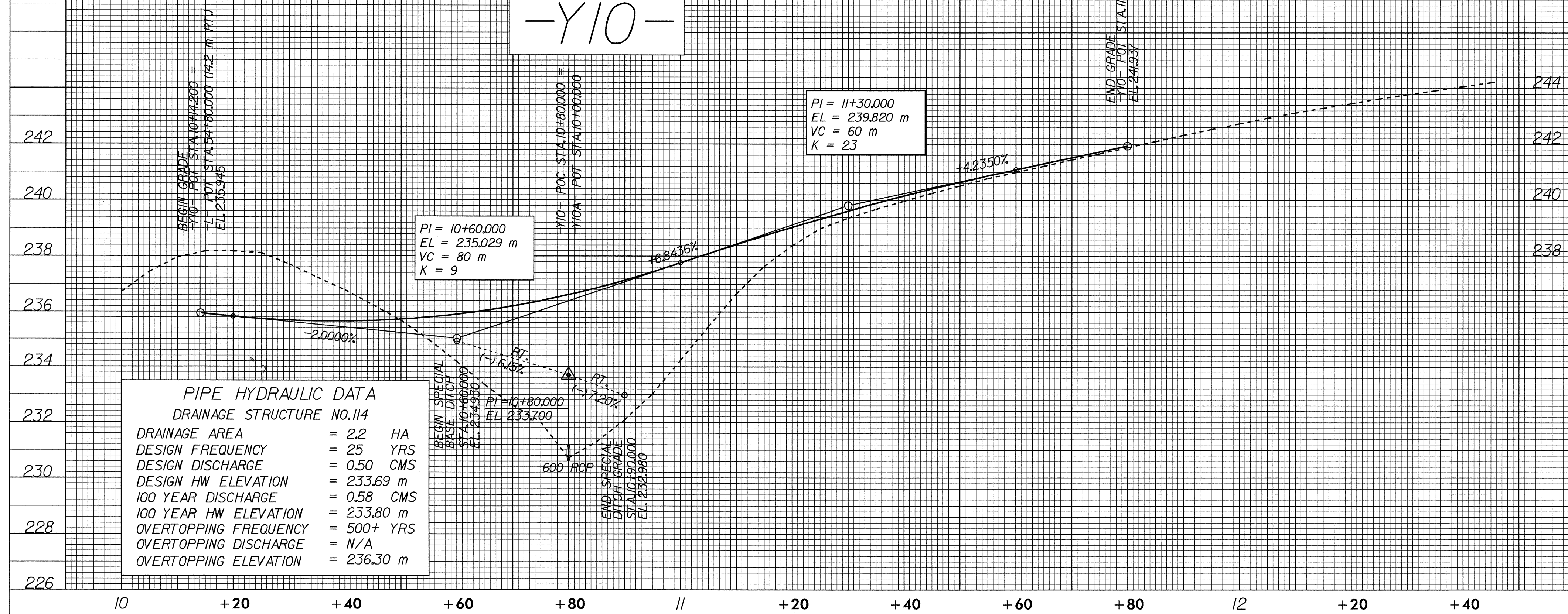
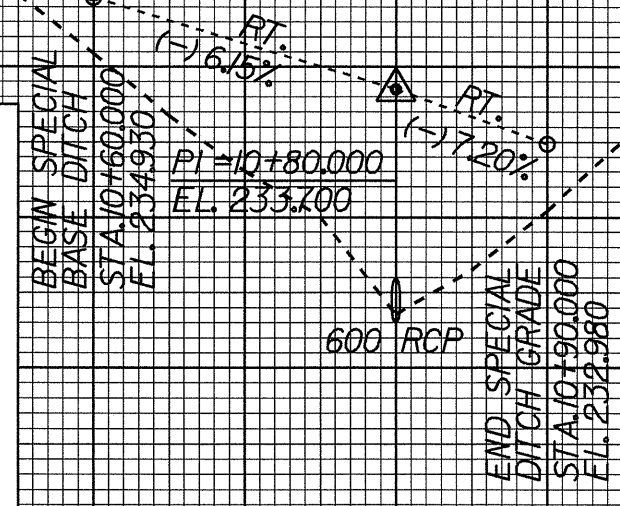
-Y10-

PI = 11+30.000
EL = 239.820 m
VC = 60 m
K = 23

PI = 10+60.000
EL = 235.029 m
VC = 80 m
K = 9

PIPE HYDRAULIC DATA
DRAINAGE STRUCTURE NO. 114

DRAINAGE AREA	= 2.2	HA
DESIGN FREQUENCY	= 25	YRS
DESIGN DISCHARGE	= 0.50	CMS
DESIGN HW ELEVATION	= 233.69	m
100 YEAR DISCHARGE	= 0.58	CMS
100 YEAR HW ELEVATION	= 233.80	m
OVERTOPPING FREQUENCY	= 500+	YRS
OVERTOPPING DISCHARGE	= N/A	
OVERTOPPING ELEVATION	= 236.30	m



CONST. REV.
R/W REV.

PROJECT REFERENCE NO. R-2568B
SHEET NO. 41

ROADWAY DESIGN ENGINEER
MICHAEL W. LITTLE
SEAL 22557

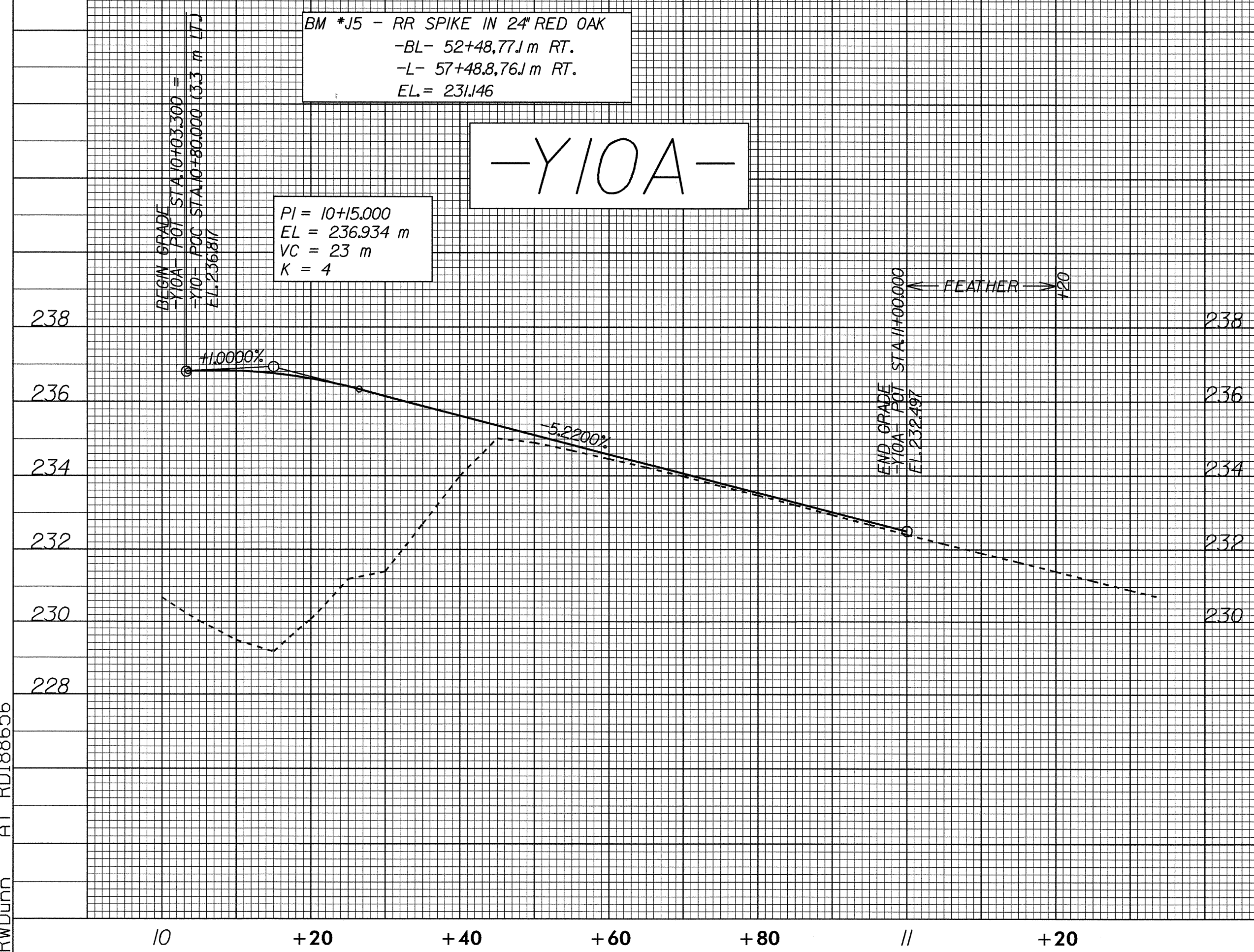
HYDRAULICS ENGINEER
SEAL 22100

FOR -Y10- PLAN VIEW
SEE SHEET 13

BM *J5 - RR SPIKE IN 2" RED OAK
-BL- 52+48.77J m RT.
-L- 57+48.8,76J m RT.
EL = 231.46

-Y10A-

PI = 10+15.000
EL = 236.934 m
VC = 23 m
K = 4



FOR -Y10A- PLAN VIEW
SEE SHEETS 13 & 14

26-JUL-2004 15:18
R:\proj\Ar-2568B\pl
RWD\unn AT RJ188656